



# POSTAL FACTS

# Introduction to Postal Facts

The United States Postal Service has a storied history, familiar to many. It began with the Second Continental Congress and Benjamin Franklin in 1775. It continued when the U.S. Constitution empowered Congress to establish Post Offices and post roads in 1787. Congress exercised those powers with the passage of the Post Office Act of 1792, which made postal services a permanent fixture of the federal government.

The act included provisions to facilitate freedom of the press, ensure the privacy of personal correspondence, and expand the nation's physical infrastructure, all vital to the nation's growth and prosperity. These principles and objectives endure. While email, the internet and social channels have forever altered information-gathering habits, postal correspondence remains a highly secure and resilient form of communication, providing the American people with a delivery infrastructure vital to national security.

The Postal Service's status is unique: It is an independent agency of the executive branch, yet it is required to operate like a business. It generally does not receive tax revenues to support its operations and must compete for customers. The success of the Postal Service depends on a culture of operational precision, world-class performance, outstanding service and innovation.

The Postal Service retains the largest physical and logistical infrastructure of any non-military government institution, providing an indispensable foundation supporting an ever-changing and evolving nationwide communication network.

The Postal Service delivers more mail and packages than any other post in the world. We serve nearly 167 million addresses in this country — covering every state, city and town. Everyone living in the United States and its territories has access to postal products and services and pays the same for a First-Class Mail postage stamp, regardless of location.

**We make the connections with friends and families and businesses and customers. We deliver to every community in America, from the biggest cities to the smallest villages. This is our public service mandate — to bind the nation together by providing secure, reliable, affordable delivery of mail and packages. It's what we do!**

## About Postal Facts

The Postal Service delivers for America. In fact, it's been delivering for America for nearly 250 years. You know we deliver, but do you know exactly how much we deliver? Each year? Every day? Did you know there are postal programs designed to help the customers and communities we serve? That we are a seriously high-tech company but that we also have a Fleet of Feet and use mules to deliver, too? And did you know that the "ZIP" in ZIP Code is an acronym? You can find answers to these questions and so many more on this website.

Our history goes all the way back to the founding of the nation. On July 26, 1775, the U.S. postal system was established by the Second Continental Congress, with Benjamin Franklin as its first postmaster general. Franklin (1706-1790) put in place the foundation for many aspects of today's mail system.

We're proud to provide secure, reliable and affordable service to every address in the United States, its territories and its military and diplomatic installations worldwide. And consider this very important fact: Everyone in the United States and its territories has access to postal products and services and pays the same for a First-Class Mail postage stamp regardless of location.

Want even more information? We're very social. You can connect with us in many ways, including:

Facebook (<https://www.facebook.com/usps>) | X (<http://x.com/usps>) | Instagram  
(<http://instagram.com/uspostalservice>) | LinkedIn (<https://www.linkedin.com/company/usps>) | YouTube  
(<https://www.youtube.com/usps>) | Podcast (<https://usps-mailin-it.simplecast.com/>)

## **#POSTALPROUD**

Unless otherwise noted, all figures are based on the Postal Service's 2023 fiscal year (Oct. 1, 2022 through Sept. 30, 2023). Trademarks (<https://facts.usps.com/#trademarks>)

# Social Awareness

## Serving communities from coast to coast

The Postal Service is part of the fabric of the nation and postal employees make a difference in every community across the country. We're committed to protecting customers, recognizing heroes, educating consumers about fraud, collecting food and helping children have a happier holiday

### HONORING service men and women

*Fact #890 | Updated: April 15, 2024*

Honoring service members. The Postal Service proudly partners with the U.S. Department of Veterans Affairs to provide burial flags to families of deceased veterans. In 2023, the Postal Service provided 374,790 burial flags.



### 39,000 pounds of batteries

*Fact #719 | Updated: April 16, 2024*

The Postal Service recycled 39,000 pounds of small lead-acid and dry cell batteries, including lithium-ion batteries, which are found in cellphones, laptops, scanners and other small electronics.

### 394,000 gallons of oil recycled

*Fact #718 | Updated: April 16, 2024*

In 2023, the Postal Service recycled 394,000 gallons of used oil — equivalent to saving more than 16 million gallons of crude oil.

### 50 bicycle delivery routes

*Fact #717 | Updated: April 16, 2024*

The Postal Service delivers mail by bicycle on 50 routes in Arizona and Florida - reducing emissions, saving fuel and the carriers can ride a bike all day!

### STAMP OUT Hunger Food Drive

*Fact #683 | Updated: April 17, 2024*

Every year, the Postal Service and the National Association of Letter Carriers hold the largest one-day food drive in the nation. The program has collected more than 1.9 billion pounds of food since the campaign began in 1993.





## DOG BITE Awareness Week

*Fact #681 | Updated: April 17, 2024*

National Dog Bite Awareness Week. Thousands of carriers deliver to homes with dogs every day. The Postal Service promotes safety initiatives and shares prevention tips to protect employees and customers from dog bites. In 2023, 5,822 postal employees were bitten by dogs.

National Dog Bite Prevention Week addresses aggressive dog behaviors that pose serious threats to Postal Service employees delivering mail and how communities they serve can play a part in their safety.

## Hi, I'm Trixie.

I'm very strong and screen doors break easily! Make sure I'm properly restrained when you get a delivery.



#DogBiteAwareness

## CARRIER ALERT program

*Fact #680 | Updated: April 17, 2024*

As one of the few points of human contact for some home-bound customers, letter carriers are particularly attuned to signs that could indicate an accident or illness. If carriers notice something unusual, such as uncollected mail, at an at-risk customer's home, the employee will alert emergency personnel. Carrier Alert began in 1982.

## POSTAL BLUE is getting greener

*Fact #655 | Updated: April 17, 2024*

The Postal Service is working hard to put its stamp on a greener tomorrow for the many communities we serve. Postal carriers deliver mail using alternative fuel vehicles, on foot and even on bicycles. Mail is delivered by bicycle on 50 routes in Florida and Arizona and more than 6,500 carriers deliver mail solely on foot.

The Postal Service's Sustainability brochure – **Building a Brighter, Greener Future** (<https://about.usps.com/what/corporate-social-responsibility/sustainability/pdf/usps-sustainability-brochure-2024.pdf>)

Sustainability is at the heart of everything we do at the U.S. Postal Service.



## RECYCLED 39,000 pounds of batteries

*Fact #534 | Updated: April 17, 2024*

In 2023, the Postal Service recycled 39,000 pounds of small lead-acid and dry cell batteries, including lithium-ion batteries, which are found in cellphones, laptops, scanners and other small electronics.

### Environmental Management: Putting our Stamp on a Greener Tomorrow

Compliance with environmental requirements provides a foundation for healthier air and waterways and sustainability success.

- The Postal Service's "zero discharge" policy mandates that no pollutants be released or discharged into stormwater systems at Postal Service facilities.
- In **2023**, the Postal Service recycled:
  - **394,000 gallons** of used oil — equivalent to saving more than 16 million gallons of crude oil.

- **39,000 pounds** of small lead-acid and dry cell batteries, including lithium-ion batteries, which are found in cellphones, laptops, scanners and other small electronics.
- The Postal Service voluntarily reports hazardous chemicals stored on site to local authorities. The voluntary reporting policy meets requirements of the Emergency Planning and Community Right-to-Know Act and supports state and local emergency planning committees and emergency responders.

**25,755**  
solar panels

*Fact #376 | Updated: April 19, 2024*

Sunny times ahead. The Postal Service has a solar power generation system consisting of more than 25,755 solar panels at its Los Angeles mail processing facility. This expands the Postal Service's use of alternative energy and makes the processing facility one of the largest buildings generating electricity through solar energy in the city.

Also, the Postal Service's Curseen Morris Processing and Distribution Center in Washington, DC has more than 14,305 solar panels, with a capacity of 5.8 megawatts (MW). It is expected to generate 7,356,000 kilowatt hours annually, which is enough electricity to power 1,014 homes each year.

**25%  
LESS**  
by 2030

*Fact #372 | Updated: April 19, 2024*

The Postal Service has a goal to reduce energy used per square foot of building space by 25 percent by 2030.

**USPS**  
Operation Santa

*Fact #284 | Updated: April 22, 2024*

USPS Operation Santa. This 111-year-old program relies solely on random acts of kindness and the generosity of strangers. In 2023, millions of people visited USPSOperationSanta.com. Generous customers adopted letters written to Santa and fulfilled wishes, helping families and children experience the magic of the season when they might not have otherwise, one letter to Santa at a time.



For more information, go to USPSOperationSanta.com (<https://www.USPSOperationSanta.com>).

In 2020, the program expanded nationwide for the first time. More than 1 million people visited USPSOperationSanta.com. Generous customers shipped more than 21,000 packages to the families and children who wrote to Santa to help them have a happier holiday.

In 2019, the digital program continued to expand. Letters were accepted letters from 17 locations, and the letters could be adopted by anyone in the country. Gifts could be shipped from more than 19,000 post offices.

In 2018, the Postal Service expanded the 2017 pilot test to include 6 additional cities (Austin, Indianapolis, Philadelphia, Phoenix, San Diego, Washington DC – and Puerto Rico and Chico, CA (site of wildfires). Letters from those locations populated the website and people in those locations only could adopt them and ship from one dedicated post office per city.

In 2017, the Postal Service launched a pilot test of a digital Operation Santa option for residents of New York City. People living in New York City, within proximity of the James A. Farley building could adopt letters online and ship gifts from JAF. Puerto Rico was also added after the hurricanes that year.

---

## HISTORY

In 1912, Postmaster General Frank Hitchcock authorized local postmasters to allow postal employees and citizens to respond to letters addressed to Santa Claus and the program came to be known as *Operation Santa*.

In the 1940s, mail volume increased to the point where the Post Office Department invited charitable organizations and corporations to participate for philanthropic purposes —providing written responses and small gifts.

Through the years, the program has taken on a life of its own and today cities around the country have established successful programs with recognized charitable organizations, major corporations, local businesses and postal employees making a major difference in the lives of the children from coast to coast.



**WE ARE**  
greener than you  
think

Fact #599 | Updated: April 22, 2024

We're greener than you think. The Postal Service is working hard to put its stamp on a greener tomorrow for the organization and the communities we serve.



For more information on the Postal Service's sustainability efforts and initiatives, go to Sustainability – What We Do – About.usps.com (<https://about.usps.com/what/corporate-social-responsibility/sustainability/welcome.htm>)



**6,500**  
fleet of feet

*Fact #72 | Updated: April 22, 2024*

More than 74,000 letter carriers drive to neighborhoods and then deliver the mail on foot. More than 6,500 carriers deliver mail entirely on foot -- the USPS Fleet of Feet. Mail is also delivered by bicycle on select routes in Arizona and Florida, reducing emissions and saving fuel.

**30,673**  
alternative fuel  
vehicles

*Fact #40 | Updated: April 22, 2024*

The Postal Service operates a fleet of 30,673 alternative fuel-capable vehicles, most of which are equipped to use ethanol. Electric, hybrid, compressed natural gas and liquid propane gas vehicles are in the fleet as well. There are electric, hybrid, compressed natural gas and liquid propane gas vehicles in the fleet as well. The Postal Service has 100 hybrid 2-ton vehicles. Fifty are electric hybrid and fifty are hydraulic hybrid.

# Social Awareness

## Serving communities from coast to coast

The Postal Service is part of the fabric of the nation and postal employees make a difference in every community across the country. We're committed to protecting customers, recognizing heroes, educating consumers about fraud, collecting food and helping children have a happier holiday

**447  
MILLION**  
rubber bands

*Fact #1239 | Updated: April 17, 2024*

Boing! The Postal Service ordered more than 447 million rubber bands in 2023, which totals 24,518 miles of material, or one trip around the world.



**MINI**  
mail carriers

*Fact #1204 | Updated: April 3, 2024*

What do you want to be when you grow up? Some kids love the idea of bringing people greetings cards and packages! The U.S. Mail carrier kids costume gets them interested early.

You can purchase the uniform her ([https://store.usps.com/store/results?Ntt=costume&\\_requestid=735558](https://store.usps.com/store/results?Ntt=costume&_requestid=735558))e.

([https://store.usps.com/store/results?Ntt=costume&\\_requestid=735558](https://store.usps.com/store/results?Ntt=costume&_requestid=735558))

This was the first official costume for the Postal Service. The second was the U.S. Mail carrier dog costume.

The costumes for kids and dogs are among an ever-growing portfolio of USPS licensed products that create royalty revenue for the organization without the expense of manufacturing and marketing.



SO  
doggone cute!

*Fact #1198 | Updated: April 15, 2024*

So doggone cute! The officially licensed USPS dog costume, introduced in 2018, is a very popular item. Thousands have been sold on the Postal Store alone and at other retailers.

You can purchase the uniform [here](https://store.usps.com/store/results?Ntt=costume&_requestid=735558).

([https://store.usps.com/store/results?Ntt=costume&\\_requestid=735558](https://store.usps.com/store/results?Ntt=costume&_requestid=735558))

It's only the second official costume in USPS history, following in the footsteps of the U.S. Mail carrier *kids*

([https://gcc02.safelinks.protection.outlook.com/?](https://gcc02.safelinks.protection.outlook.com/?url=https%3A%2F%2Fstore.usps.com%2Fstore%2Fproduct%2Fstamp-gifts%2Fus-mail-carrier-toddlerkids-costume-P_842961&data=04%7C01%7CKathleen.F.Howard%40usps.gov%7C93072b)

[url=https%3A%2F%2Fstore.usps.com%2Fstore%2Fproduct%2Fstamp-gifts%2Fus-mail-carrier-toddlerkids-costume-](https://gcc02.safelinks.protection.outlook.com/?url=https%3A%2F%2Fstore.usps.com%2Fstore%2Fproduct%2Fstamp-gifts%2Fus-mail-carrier-toddlerkids-costume-P_842961&data=04%7C01%7CKathleen.F.Howard%40usps.gov%7C93072b)

[P\\_842961&data=04%7C01%7CKathleen.F.Howard%40usps.gov%7C93072b](https://gcc02.safelinks.protection.outlook.com/?url=https%3A%2F%2Fstore.usps.com%2Fstore%2Fproduct%2Fstamp-gifts%2Fus-mail-carrier-toddlerkids-costume-P_842961&data=04%7C01%7CKathleen.F.Howard%40usps.gov%7C93072b) that's been available for years.

The costumes for dogs and kids are among an ever-growing portfolio of USPS licensed products that create royalty revenue for the organization without the expense of manufacturing and marketing.







## FLOATING Post Office

*Fact #1147 | Updated: April 15, 2024*

This Post Office floats! The Halibut Cove Post Office (99603) in Homer, AK, floats. The office is a small houseboat that is permanently tied to a dock.



## WRITE BADLY? We can still read it!

*Fact #1105 | Updated: April 15, 2024*

Floating Post Office – Halibut Cove – in Homer, AK

Chicken scratch. The Postal Service has an entire operation dedicated to deciphering poor penmanship.

Letter mail at a processing plant that cannot be read by the automated equipment has an image taken and transmitted to the Remote Encoding Center (REC). At the REC, employees look at the image and type in address information. The information is matched up with a valid address, the data is transmitted back to the equipment at the plant, and a barcode is printed on the letter. That barcode can be read by any letter processing machine in the Postal Service, keeping the letter within the automated stream of mail in the postal network.

## NO FLAG Flies Here

*Fact #1103 | Updated: April 15, 2024*

No high-flying flag here. The B. Free Franklin Post Office in Philadelphia is the only Post Office in the country that doesn't fly the American flag — because in 1775 when Benjamin Franklin was appointed Postmaster General there was no flag.

Franklin used to own the building and there is a small museum on the second floor.



## POP! POP! Pop! Pop! Pop!

*Fact #1100 | Updated: March 20, 2023*

The Postal Service ordered more than 276 million square feet of bubble wrap to safely deliver COVID-19 test kits to the American public. At 12 inches wide, this is enough bubble wrap material to circle the globe more than twice.

## OFFICES serving two states

*Fact #1098 | Updated: April 15, 2024*

Twice as nice. Texarkana, TX (77501) and Texarkana, AR (71854) share a Post Office that straddles the state line. Bristol, TN (37620) and Bristol, VA (24203) share a Post Office in Tennessee. Each office has two ZIP Codes and employees serve the customers in their respective states out of the same office.







## CORRALES NM

PO made of  
straw

*Fact #1097 | Updated: April 15, 2024*

In Corrales, NM, in 1999, a new Post Office was built with more than 900 bales of straw as insulation. The Post Office is still standing strong and saving energy — a proud testament to the Postal Service’s longstanding history of sustainable practices.



Window inside office shows the straw



Corrales NM Post Office

## DECODING the ZIP Code

*Fact #1096 | Updated: April 15, 2024*

The Zoning Improvement Plan (ZIP) Code was launched in 1963 to better process and deliver increasing volumes of U.S. Mail. The first number in the five-digit ZIP Code represents a general geographic area of the nation, “0” in the east, moving to “9” in the west. The next two numbers represent regional areas, and the final two identify specific Post Offices.

**Decoding the code.** In 1983, the ZIP+4 Code was introduced. The extra four numbers enable mail to be sorted to a specific street. In 1991, two more numbers were added so that mail could be sorted directly to a residence or business. Today, the use of ZIP Codes extends far beyond the mailing industry, including being a fundamental component in the nation’s 911 emergency system.

There are 41,704 ZIP Codes in the country. They range from 00501, belonging to the Internal Revenue Service in Holtsville, NY, to 99950 in Ketchikan, AK. Easiest to remember? How about 12345, a unique ZIP Code for General Electric in Schenectady, NY.



Mr. ZIP helped promote the new ZIP Code concept in 1963.



## JUST ANOTHER BRICK IN THE MAIL

*Fact #1082 | Updated: April 15, 2024*

Individual bricks can be shipped in the U.S. Mail. Get a permanent marker, write the address and your return address, get it weighed and add the postage. Send that special someone a brick of affection.

Just don't think you can send enough bricks to build a house or, perhaps a bank. Been there. Done that. You can read about the bank of Vernal, UT, here (<https://about.usps.com/who-we-are/postal-history/bank-of-vernal.pdf>).



## KIDS in the mail??

*Fact #1081 | Updated: April 15, 2024*

Do not try to ship your kids!! In the early days of Parcel Post, a few parents managed to mail their children to relatives. In 1913, an 8-month-old baby in Ohio was mailed by his parents to his grandmother, who lived a few miles away. The baby was safely delivered! Regulations were quickly established to prevent any additional mailing of children through the U.S. Mail.



## FORT KNOX

gold in the mail

*Fact #1080 | Updated: April 15, 2024*

Under the watchful security of the Postal Inspection Service, Railway Mail Service clerks transferred some of the \$9 billion in gold bullion shipped as registered mail from the New York City Assay Office to the depository at Fort Knox, KY, in 1941.

The Inspection Service provided security and management in the cooperative effort between the Post Office Department, local law enforcement, U.S. Army and U.S. Treasury Department.

## HOPE

in the mail

*Fact #1079 | Updated: April 15, 2024*

Hope in the mail. In 1958 Harry Winston donated the Hope diamond to the Smithsonian Institution. With his years of experience in shipping jewelry all over the world, Winston sent the diamond via registered mail with the Post Office Department.



The diamond was placed in a box, wrapped in brown paper, and sent by registered mail from New York in a Railway Post Office train car. In Washington, it was picked up by a postal carrier and driven to the National Museum of Natural History. The price paid for shipping the gem, valued at \$1 million at the time, was \$145.29, most of that for package insurance.

## SPUDTACULAR!

potatoes in the mail

*Fact #1077 | Updated: April 15, 2024*

It's SPUDTACULAR! As with coconuts, potatoes can be mailed without a box. Simply write the address it's going to and your return addresses on the spud, have it weighed for appropriate postage, and it can be shipped as-is. Let someone know they are special. Send a tater!





## IF IT CLUCKS IT SHIPS

*Fact #1075 | Updated: April 15, 2024*

### SPUDTACULAR!

If it clucks, it ships. The Postal Service has been working with hatcheries for more than 100 years to safely transport mail-order chicks during the spring and summer months.

Chicks can be safely transported without food or water within 72 hours of hatching. In fact, placing food and water inside the hatchery box could jeopardize the integrity of the box and could endanger the health and safety of the animals inside. Thousands of chicks are transported through the U.S. Mail seamlessly every year. This is a legacy operation we take very seriously as lives are literally at stake.



### chicks in the mail

Coconuts can be mailed without a box. Simply address the coconut and add your return addresses on the husk, have it weighed for appropriate postage, and it is shipped as-is. Photo: Coconuts ready for mailing at the Molokai, HI, Post Office.

## THAT'S JUST NUTS!

*Fact #1057 | Updated: April 15, 2024*



## WE deliver!

*Fact #641 | Updated: April 15, 2024*

The Postal Service moves mail by planes, hovercraft, trains, trucks, cars, boats, ferries, helicopters, subways, bicycles, mules and feet.

#WeDeliverForYou

## LARGEST ZIP in Contiguous US

Fact #971 | Updated: April 15, 2024

The largest ZIP Code in the contiguous U.S. is 89049, Tonopah, NV, at 10,821 square miles.

Twenty-four of the top 25 largest ZIP Codes in the country are located in Alaska – ranging from the largest, 99734, at more than 30,000 square miles to 99741 at 7,600 square miles. The 14th spot goes to Nevada, 89049.



## LARGEST ZIP in continental US

Fact #969 | Updated: April 15, 2024

The largest ZIP Code in the continental U.S. is 99734, Prudhoe Bay, AK, at 30,683 square miles.

Twenty-four of the top 25 largest ZIP Codes in the country are located in Alaska – ranging from the largest, 99734, at more than 30,000 square miles to 99741 at 7,600 square miles. The 14<sup>th</sup> spot goes to Nevada, 89049.



## FAMOUS postal employees

Fact #869 | Updated: April 15, 2024

Heads of industry. Hollywood legends. Sports heroes. Singers. Painters. Writers. And a couple presidents. All were postal employees before they became household names! Thirteen have even been featured on stamps.

FAMOUS POSTAL EMPLOYEES

Most people know that Benjamin Franklin worked for the Postal Service, but did you know that Bing Crosby and Walt Disney did, too? What about Steve Carell or Charles Lindbergh? John Prine or Brittany Howard?

Thirteen of these former employees have also been commemorated on U.S. postage stamps and are marked by an asterisk.

▪ John Brown	Abolitionist	Postmaster, Randolph, PA – 1828-1835
▪ Steve Carell	Actor, comedian	Rural letter carrier, Littleton, MA – 1985
▪ Bing Crosby*	Singer, actor	Substitute and regular clerk, Spokane, WA – 1921
▪ Walt Disney*	Film producer	Substitute carrier, Chicago – 1918
▪ William Faulkner*	Novelist	Postmaster, University, MS – 1921-1924
▪ Benjamin Franklin*	Statesmen, inventor	Postmaster general, 1775-1776
▪ Ace Frehley	Guitarist for Kiss	Substitute letter carrier, New York City – ca. 1970
▪ Sherman Hemsley	Actor	Clerk, Philadelphia and New York City – 1960s
▪ Conrad Hilton	Hotel magnate	Postmaster, San Antonio, NM – 1910-1911
▪ Harry Hooper	Baseball Hall-of-Famer	Postmaster, Capitola, CA – 1933-1957
▪ Brittany Howard	Singer, Alabama Shakes	Rural carrier assistant, Athens, AL – 2011
▪ Rock Hudson	Actor	Substitute letter carrier, Winnetka, IL – ca. 1947
▪ Ellsworth Kelly*	Artist	Clerk, New York City – 1954-1955
▪ Sidney Lanier*	Poet	Clerk, Macon, GA – ca. 1858
▪ Abraham Lincoln*	U.S. president	Postmaster, New Salem, IL – 1833-1836
▪ Charles Lindbergh*	Aviator	Airmail pilot – 1926-1927
▪ Fred C. Lindstrom	Baseball Hall-of-Famer	Postmaster, Evanston, IL – 1961-1972
▪ Charles Mingus	Jazz musician	Letter carrier, Los Angeles, 1949, and clerk, New York City, 1952
▪ Samuel F. B. Morse	Inventor	Superintendent, Telegraph Unit – 1845-1846
▪ John Prine	Singer, songwriter	Letter carrier, Maywood, IL – 1964-1969
▪ Knute Rockne*	Football coach	Substitute and regular clerk, Chicago – 1907-1910
▪ Adlai E. Stevenson	U.S. vice president	First assistant postmaster general – 1885-1889
▪ Harry S. Truman*	U.S. president	Postmaster, Grandview, MO – 1914-1915
▪ John Wanamaker	Retail magnate	Postmaster general – 1889-1893
▪ Noah Webster*	Lexicographer	Special agent – 1793
▪ Hal Williams	Actor	Clerk, Los Angeles – 1968-70s
▪ Richard Wright*	Author	Substitute clerk, Chicago – 1929-1932
▪ N.C. Wyeth*	Painter	Mail carrier, Fort Defiance, AZ, to Crozier, NM – 1904

© IS FOR CREATIVE

Fact #884 | Updated: April 15, 2024

FARM GOODS delivered by mail

Fact #879 | Updated: April 15, 2024

24-HOUR unstaffed Post Office

Fact #875 | Updated: April 15, 2024

SINGING mailman

Fact #746 | Updated: April 15, 2024

© is for creative. The Postal Service has more than 500 copyright registrations, many of them to protect artwork on postage stamps.

The farm-to-table concept isn’t new. From 1914 to 1920, the farm-to-table program was a novel initiative that allowed farmers to arrange prices with people in urban areas and then mail them fresh meats, eggs, dairy products, produce, honey, jelly, and more. This was a way to give farmers more customers and city dwellers greater and cheaper access to fresh goods.

One of a kind. There is a 24-hour, unstaffed, self-service Post Office in Northern Virginia that allows customers to conduct most shipping and mailing transactions quickly and easily themselves. The Self-Service Post Office provides round-the-clock accessibility to PO Boxes, as well as self-service kiosks and an automated package drop. In 2023, nearly 8,000 customers used this convenient office.

John Prine, singer and songwriter, was a letter carrier in Maywood, IL, 1964-1969.

## FAMOUS POSTAL EMPLOYEES

Most people know that Benjamin Franklin worked for the Postal Service, but did you know that Bing Crosby and Walt Disney did, too? What about Steve Carell or Charles Lindbergh? John Prine or Brittany Howard?

Twelve of these former employees have also been commemorated on U.S. postage stamps and are marked by an asterisk.

▪ John Brown	Abolitionist	Postmaster, Randolph, PA – 1828-1835
▪ Steve Carell	Actor, comedian	Rural letter carrier, Littleton, MA – 1985
▪ Bing Crosby*	Singer, actor	Substitute and regular clerk, Spokane, WA – 1921
▪ Walt Disney*	Film producer	Substitute carrier, Chicago – 1918
▪ William Faulkner*	Novelist	Postmaster, University, MS – 1921-1924
▪ Benjamin Franklin*	Statesmen, inventor	Postmaster general, 1775-1776
▪ Sherman Hemsley	Actor	Clerk, Philadelphia and New York City – 1960s
▪ Conrad Hilton	Hotel magnate	Postmaster, San Antonio, NM – 1910-1911
▪ Harry Hooper	Baseball Hall-of-Famer	Postmaster, Capitola, CA – 1933-1957
▪ Brittany Howard	Singer, Alabama Shakes	Rural carrier assistant, Athens, AL – 2011
▪ Rock Hudson	Actor	Substitute letter carrier, Winnetka, IL – ca. 1947
▪ Sidney Lanier*	Poet	Clerk, Macon, GA – ca. 1858
▪ Abraham Lincoln*	U.S. president	Postmaster, New Salem, IL – 1833-1836
▪ Charles Lindbergh*	Aviator	Airmail pilot – 1926–1927
▪ Fred C. Lindstrom	Baseball Hall-of-Famer	Postmaster, Evanston, IL – 1961-1972
▪ Charles Mingus	Jazz musician	Letter carrier, Los Angeles, 1949, and clerk, New York City, 1952
▪ Samuel F. B. Morse	Inventor	Superintendent, Telegraph Unit – 1845-1846
▪ John Prine	Singer, songwriter	Letter carrier, Maywood, IL – 1964-1969
▪ Knute Rockne*	Football coach	Substitute and regular clerk, Chicago – 1907-1910
▪ Adlai E. Stevenson	U.S. vice president	First assistant postmaster general – 1885-1889
▪ Harry S. Truman*	U.S. president	Postmaster, Grandview, MO – 1914-1915
▪ John Wanamaker	Retail magnate	Postmaster general – 1889-1893
▪ Noah Webster*	Lexicographer	Special agent – 1793
▪ Hal Williams	Actor	Clerk, Los Angeles – 1968-70s
▪ Richard Wright*	Author	Substitute clerk, Chicago – 1929-1932
▪ N.C. Wyeth*	Painter	Mail carrier, Fort Defiance, AZ, to Crozier, NM – 1904

**318**  
**MILLION**  
mail pieces  
processed daily

*Fact #844 | Updated: April 15, 2024*

The Postal Service processed and delivered an average of 318 million mail pieces daily in 2023.

**JUST 1**  
**DAY**  
in the Postal  
Service

*Fact #840 | Updated: April 15, 2024*

Each day the Postal Service picks up, processes and delivers millions of letters and packages. No single operation in the world comes close to this level of connectivity for so many households and businesses.

Here's just **ONE** day in the life of the Postal Service. (Figures are averages.)

<b>258.9 M</b>	— revenue received, in dollars.
<b>5.8 M</b>	— dollars paid to postal employees in salaries and benefits.
<b>318 M</b>	— average number of mail pieces processed and delivered daily.
<b>13.3 M</b>	— average number of mail pieces processed each hour.
<b>221,080</b>	— average number of mail pieces processed each minute.
<b>3,684</b>	— average number of mail pieces processed each second.
<b>152.3 M</b>	— pieces of First-Class Mail processed and delivered.
<b>23.5 M</b>	— packages processed and delivered.
<b>6,600</b>	— number of letter carriers who deliver mail entirely on foot — <i>The USPS Fleet of Feet</i> .
<b>93,709</b>	— number of address changes processed.
<b>5,629</b>	— number of addresses added to our delivery network.
<b>7 M</b>	— number of people who visit <i>usps.com</i> .
<b>1.1 M</b>	— dollars spent at The Postal Store at <i>usps.com</i> .
<b>209,602</b>	— number of money orders issued.

## OWNEY the postal dog

Fact #776 | Updated: April 16, 2024

On an autumn day in 1888, a shaggy pup took his first steps toward becoming a postal legend when he crept into the Albany, New York, Post Office. Postal employees allowed him to stay and named him Owney.

At first, Owney stayed close to the Post Office, but he soon began riding mail wagons to the train depot and then rode the railway mail car down to New York City and back to Albany. As Owney traveled farther, his friends at the Albany Post Office feared he might wander too far away to find his way home again, so they purchased a leather collar with a tag reading “Owney, Post Office, Albany, N.Y.” Railway mail clerks recorded Owney’s travels by attaching metal baggage tags to his collar to identify the rail lines he traveled on. He was soon weighed down by his collection of tags. Postmaster General John Wanamaker presented Owney with a little jacket to distribute their weight more evenly.

Owney took to traveling farther and staying away longer, eventually visiting Mexico, Canada, Japan, China, Singapore, Suez, Algiers, and the Azores. While being shown off to an Ohio newspaper reporter, Owney bit the clerk who was handling him. The Postmaster had Owney put down on June 11, 1897. Railway mail clerks chipped in money to have a taxidermist preserve Owney’s body, which then was sent to postal headquarters in Washington, D.C., for exhibit. In 1911, the Post Office Department entrusted Owney to the Smithsonian Institution. Since 1993, Owney has been part of the National Postal Museum in Washington, D.C. In 2011, Owney was honored on a commemorative U.S. postage stamp.





## SHIP mail delivery

*Fact #772 | Updated: April 16, 2024*

Ship Ahoy! The JW Westcott is a 45-foot contract mail boat out of Detroit that delivers mail to passing ships on the Detroit River. The JW Westcott has its own ZIP Code — 48222.



This is the J.W. *Westcott II* approaching a Canadian freighter on the Detroit River

## POST OFFICE with walk-in freezers

*Fact #770 | Updated: April 16, 2024*

The Peach Springs, AZ, Post Office has walk-in freezers for food destined for delivery by mule train to the bottom of the Grand Canyon.



## STAMPS in caves

*Fact #768 | Updated: April 16, 2024*

No troglodytes here! The Stamp Fulfillment Service facility, located in Kansas City, MO, is located in a limestone cave 150 feet beneath the ground. It is the Postal Service's only facility located underground.

The consistent, year-round temperatures and humidity levels in the caves allow the stamps to be maintained in mint-quality condition. The underground facility also keeps the inventory and employees safe from snow, flooding, winds and tornadic activity common in the Midwest.

## MR. ZIP

*Fact #754 | Updated: April 16, 2024*

Mr. ZIP, who has no first name, appeared in many public service announcements and advertisements urging postal customers to use the five-digit ZIP Code that was initiated on July 1, 1963. Within four years of his appearance, eight out of ten Americans knew who Mr. ZIP was and what he stood for.



With the introduction of the nine-digit ZIP Code, or ZIP+4, in 1983, Mr. ZIP went into partial retirement. His image still was printed on the selvage of some sheets of stamps, but that practice ended in January 1986. Mr. ZIP still is used occasionally by the Postal Service.



## 50 bicycle delivery routes

*Fact #717 | Updated: April 16, 2024*

The Postal Service delivers mail by bicycle on 50 routes in Arizona and Florida - reducing emissions, saving fuel and the carriers can ride a bike all day!

## THE ORIGINAL social network

Fact #661 | Updated: April 17, 2024

The Postal Service is the original social network, but that doesn't mean we aren't represented on the other, newer social networks. You can find the Postal Service on Facebook, Twitter, Instagram, LinkedIn and YouTube.

**Facebook** — [facebook.com/usps](https://www.facebook.com/usps) (<http://www.facebook.com/usps>)

**Twitter** — [twitter.com/usps](https://twitter.com/usps) (<http://www.twitter.com/usps>)

**Instagram** — [instagram.com/uspostalservice](https://www.instagram.com/uspostalservice) (<http://www.instagram.com/uspostalservice>)

**LinkedIn** — [linkedin.com/company/usps](https://www.linkedin.com/company/usps) (<http://www.linkedin.com/company/usps>)

**YouTube** — [youtube.com/usps](https://www.youtube.com/usps) (<http://www.youtube.com/usps>)

## PATENTLY the best

Fact #647 | Updated: April 17, 2024

Patently the best. The United States Patent and Trademark Office has issued more than 500 patents to the United States Postal Service.



## LEAVING our mark

Fact #646 | Updated: April 17, 2024

Leaving a mark! The Postal Service has 385 domestic and 1,000 foreign trademark registrations.

## MASTER of our domains

Fact #645 | Updated: April 17, 2024

Master of our domains. The Postal Service owns 1,958 internet domains.

## POSTAL BULLETIN

Fact #637 | Updated: April 17, 2024

On time. Every time. The Postal Bulletin, a nationally distributed biweekly publication, serves as a source for official policy, procedure updates and departmental news for all Postal Service functions. It has never missed a deadline since its inception in 1880.

Go to <https://about.usps.com/resources/postal-bulletin.htm> (<https://about.usps.com/resources/postal-bulletin.htm>) to browse past issues.





**139,409**  
blue collection  
boxes

*Fact #536 | Updated: April 17, 2024*

Iconically ours. There are 139,409 iconic blue collection boxes in use on street corners across the nation.

About those iconic blue boxes...

They weren't always blue. Before 1970, they were green, then red, then white, then green again, and finally — beginning in 1955 — red, white and blue.



**5,629**  
addresses  
added daily

*Fact #524 | Updated: April 17, 2024*

The Postal Service added an average of 5,629 addresses to its delivery network every day in 2023.

**152 M**  
**PIECES**  
of mail  
processed daily

*Fact #523 | Updated: April 17, 2024*

On average, the Postal Service processes and delivers 152.3 million pieces of First-Class Mail each day.

**13.3**  
**MILLION**  
pieces  
processed each  
hour

*Fact #522 | Updated: April 17, 2024*

On average, the Postal Service processes 318 million mail pieces each day, 13.3 million each hour, 221,000 each minute and 3,684 each second.

**383.3 M** — number of mail pieces processed and delivered each day.

**16 M** — average number of mail pieces processed each hour.

**226,000** — average number of mail pieces processed each minute.

**4,437** — average number of mail pieces processed each second.

## VERY SPECIAL delivery

Fact #386 | Updated: April 17, 2024

In the early days of Parcel Post, a few parents managed to mail their children to relatives. In 1913, an 8-month-old baby in Ohio was mailed by his parents to his grandmother who lived a few miles away.

### Grandma, can you babysit?

Just a few weeks after Parcel Post began, Jesse and Mathilda Beagle “mailed” their 8-month-old son James to his grandmother, who lived a few miles away near Batavia, Ohio. Baby Beagle was just under the initial 11-pound limit for parcels. Rural Carrier Vernon Lytle picked up the baby from his parents’ house and carried him in his mail wagon to his grandmother’s house. The postage was fifteen cents, and the “parcel” was insured for \$50. Although it was against postal regulations, several children traveled via U.S. Mail in the early years of Parcel Post. Initially the only animals that were allowed in the mail were bees and bugs. In 1918, day-old chicks were allowed in the mail. In 1919, some additional “harmless live animals” were permitted, but children did not fall into this category.



## 447 MILLION rubber bands

Fact #379 | Updated: April 17, 2024

Boing! The Postal Service ordered more than 447 million rubber bands in 2023, which totals 24,518 miles of material, or one trip around the world.



## OUTER SPACE postage stamp

Fact #332 | Updated: April 19, 2024

Out of this world! A postage stamp was inside the New Horizons spacecraft that made a flyby of Pluto in July 2015. That's the farthest distance traveled by a postage stamp - more than 3 billion miles. So noted by the Guinness World Records.

The “*Pluto: Not Yet Explored*” 29-cent stamp was part of a set of solar system stamps that were issued in 1991.



## MULE TRAIN delivery

Fact #310 | Updated: April 22, 2024

The most unusual delivery method used by the Postal Service is a mule train in Arizona. The mules carry mail, food and supplies down a 9-mile trail to the Havasupai Indians at the bottom of the Grand Canyon.

**Got mules?** The most unusual mode of delivery used by the Postal Service is the mule train.

Since the 1930s, mules have been carrying mail and goods to the Havasupai people located inside the Grand Canyon.

- 10-22 mules are used daily, along with one wrangler on horseback, 5 days a week, traveling 9 miles down into the canyon to the Supai Post Office.
- It takes **3 hours** to get down and **5 hours** to get back up
- On the way back up, the wrangler untethers the mules and sends them back up on their own
- Each mule can carry up to **200 pounds** and the weight is loaded equally on each side for balance
- The Supai Post Office has a special Mule Train postmark







## MOST COMMON city names

*Fact #309 | Updated: April 22, 2024*

Ben, this one's for you! Franklin is the most common city name — 28 of them — with Clinton, Madison and Washington tied for second (27 each) and Chester, Greenville, Marion and Springfield at third (25). The most common Post Office name is Clinton, with 26 locations, followed by Madison at second (25) and Franklin and Washington tied for third (24).





## 33 MILE LONG Main Street

*Fact #308 | Updated: April 22, 2024*

The longest Main Street in the country is located in Island Park, ID, and is 33 miles long.



## 21,569 Main streets

*Fact #307 | Updated: April 22, 2024*

Main Street America is here and here and... The most common street name in the country is Main — 21,569 of them — followed by Second with 17,196, Third with 16,002 and First with 14,963. The longest Main Street, located in Island Park, ID, is 33 miles long.

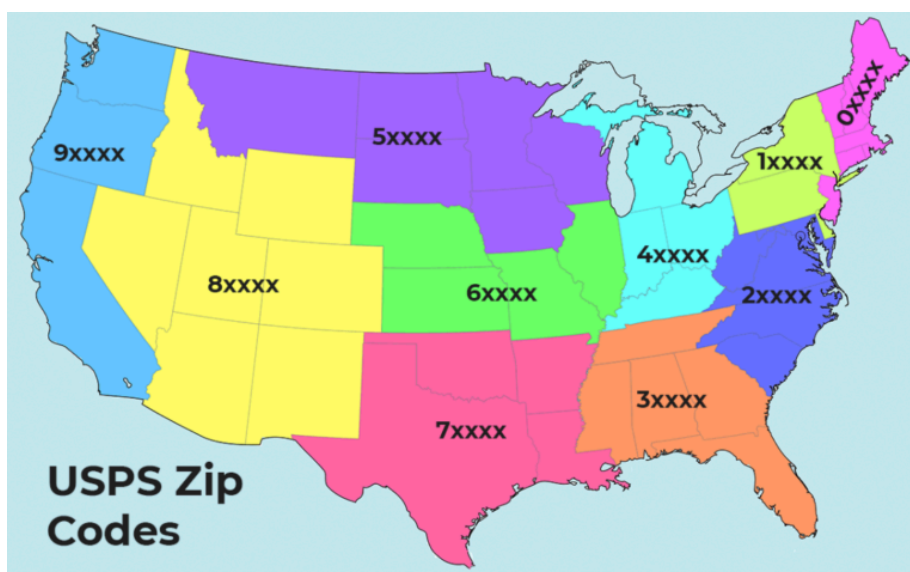
**41,642**  
ZIP Codes

*Fact #306 | Updated: April 22, 2024*

There are 41,642 ZIP Codes in the country. They range from 00501, belonging to the Internal Revenue Service in Holtsville, NY, to 99950 in Ketchikan, AK. Easiest to remember? How about 12345, a unique ZIP Code for General Electric in Schenectady, NY.

### Quick! What's that ZIP Code?

The ZIP Code was introduced in 1963. The first number represents a general geographic area of the nation, "0" in the East moving to "9" in the West. The next two numbers indicate regional areas and the final two, specific Post Offices or postal zones in larger cities. Make it a ZIP+4 Code, introduced in 1983, and mail can be sorted to specific streets, buildings, houses and businesses. Today, ZIP Codes are important parts of the nation's 911 emergency system. ZIP = Zone or Zoning Improvement Plan.



**12**  
**BILLION**  
miles traveled

*Fact #305 | Updated: April 22, 2024*

Stellar performance! During 2023, Postal Service employees traveled more than 1.2 billion miles to deliver your mail, equivalent to 48,191 laps around Earth, 5,023 trips to the moon or 13 trips to the sun.





## 116,628 deliveries from one office

*Fact #279 | Updated: April 22, 2024*

The Post Office location with the most possible street deliveries is Heritage Station in San Antonio, TX (78245, 78250, 78251, 78253) — with 116,628 deliveries.

## COLDEST Post Office

*Fact #276 | Updated: April 22, 2024*

Our Post Office in Utqiagvik, North Slope of Alaska -- formerly Barrow (99723) and Wainwright (99782) -- experiences the coldest temperatures.

## SHORTEST delivery route

*Fact #151 | Updated: April 22, 2024*

The shortest delivery route is rural route 012 in Woodinville, WA (98072) — 2.45 miles daily, delivering to 1,147 boxes.

## LONGEST delivery route

*Fact #150 | Updated: April 22, 2024*

The longest delivery route is rural route 001 in Sidney, MT (59270) — 195.2 miles daily, delivering to 305 boxes.

## 12345 easiest to remember

*Fact #149 | Updated: April 22, 2024*

The easiest to remember ZIP Code is 12345, a unique ZIP Code for General Electric in Schenectady, NY.

## HIGHEST ZIP Code

*Fact #148 | Updated: April 22, 2024*

The highest numbered ZIP Code is 99950 in Ketchikan, AK.

## LOWEST ZIP Code number

*Fact #147 | Updated: April 22, 2024*

The lowest ZIP Code number is 00501, unique for the Internal Revenue Service in Holtsville, NY.

## DOCK- TO-DOCK delivery

*Fact #146 | Updated: April 22, 2024*

Dock-to-dock delivery on the Magnolia River in Alabama. A 15-foot contract mail boat delivers to 176 dock-side mailboxes on a 31-mile stretch of the river.

## POST OFFICE most needing a bridge

*Fact #143 | Updated: April 22, 2024*

The Post Office in most need of a bridge is in Point Roberts, WA. It can be reached by car only by driving through British Columbia, Canada. Only a boat or float plane can travel directly there.



## 2ND OLDEST Post Office

*Fact #141 | Updated: April 22, 2024*

The second oldest Post Office location is in Castine, ME, from 1833.

## OLDEST Post Office

Fact #140 | Updated: April 22, 2024

## LARGEST retail space

Fact #139 | Updated: April 22, 2024

## SMALLEST POST OFFICE

Fact #138 | Updated: April 22, 2024

The Hinsdale, NH, Post Office (03451) has been located in the same building since 1816.

The largest U.S. Postal Service retail space is the James A. Farley Post Office in New York, NY (10001), at 33,100 square feet.

The smallest Post Office is located in Ochopee, FL (34141) and is 61.3 square feet. The building used to be a storage facility for irrigation pipes of an adjacent tomato farm. It was converted into a Post Office in 1953, after a fire that destroyed a previous Post Office and general store.

There is a sign beside the office that reads:

### OCHOPEE POST OFFICE

Considered to be the smallest post office in the United States, this building was formerly an irrigation pipe shed belonging to the J.T. Gaunt Company tomato farm. It was hurriedly pressed into service by postmaster Sidney Brown after a disastrous night fire in 1953 burned Ochopee's general store and post office. The present structure has been in continuous use ever since – as both a post office and ticket station for Trailway's bus lines – and still services residents in a three-county area, including deliveries to Seminole and Miccosukee Indians living in the region. Daily business often includes requests from tourists and stamp collectors the world over for the famed Ochopee postmark. The property was acquired by the Wooten Family in 1992.

— Collier County Board of County Commissioners



## HIGHEST U.S. Post Office

Fact #125 | Updated: April 22, 2024

The highest Post Office in the United States is located in Alma, CO (80420), at 10,578 feet above sea level.

**\$258.9**  
million in  
revenue daily

Fact #47 | Updated: April 22, 2024

**WHOA!**  
Pony Express

Fact #385 | Updated: April 22, 2024

The Postal Service receives, on average, \$258.9 million in revenue each day.

The Pony Express was in operation only from April 3, 1860, to Oct. 26, 1861. It was never part of the U.S. Postal Service.

### That's no pony, that's a big horse

The official name for the “Pony Express” was the Central Overland California & Pike’s Peak Express Co. Before they were hired, riders had to swear on a Bible not to curse, fight or abuse their animals. **Orphans were preferred.** The service was in operation only from April 3, 1860, to Oct. 26, 1861. It operated as a U.S. Mail route during its final 4 months.

On April 3, 1860, the first Pony Express mail, traveling by horse and rider relay teams, simultaneously leaves St. Joseph, Missouri, and Sacramento, California. Ten days later, on April 13, the westbound rider and mail packet completed the 1,800-mile journey and arrived in Sacramento, beating the eastbound packet’s arrival in St. Joseph by two days and setting a new standard for speedy mail delivery. The Pony Express was by far the most effective way to communicate cross-country —until the telegraph came along. After 18 months in operation, the system was shuttered on October 26, 1861, and the last remaining mail was delivered.

The Pony Express National Historic Trail was designated to preserve the story and routes of this nationally significant trail and to support the associated sites that preserve its history. Learn more at <https://www.nps.gov/poex> ([https://www.nps.gov/poex?fbclid=IwAR2KdN50AozolPGdixRK6jcSdl\\_HRRLkzWW1VOB0PiG1R3BZSd3b-fUfECY](https://www.nps.gov/poex?fbclid=IwAR2KdN50AozolPGdixRK6jcSdl_HRRLkzWW1VOB0PiG1R3BZSd3b-fUfECY))



# Social Awareness

## Serving communities from coast to coast

The Postal Service is part of the fabric of the nation and postal employees make a difference in every community across the country. We're committed to protecting customers, recognizing heroes, educating consumers about fraud, collecting food and helping children have a happier holiday

### SERVING Those Who Serve

*Fact #1106 | Updated: April 15, 2024*

It's not just any letter or package. It's a picture of the kids. It's a handmade scarf. It's a favorite candy bar. It's a piece of home. The Postal Service helps make sure these very special letters and packages make it to those who serve in the military — and their families with them — wherever they are around the globe. It's our honor to serve those who serve!

### ELECTION MAIL

*Fact #941 | Updated: April 15, 2024*

The U.S. Postal Service upholds its promise to deliver the nation's Election Mail securely and on time, consistent with the organization's non-partisan public service mission.

Election Mail consists of mail to or from election officials, including ballots, ballot applications, registration forms and other items that enable citizens to participate in the voting process. The U.S. Postal Service is committed to delivering the nation's Election Mail securely and on time, consistent with the organization's non-partisan public service mission.

During the election period of Aug. 1 and Oct. 31, 2023, there were nearly 62 million pieces of Election Mail dispatched.

The Postal Service supports voters choosing to use the U.S. Mail to return their ballots, whether it's for a seat on the local school board or for the president of the United States — and everything in between.

### HONORING service men and women

*Fact #890 | Updated: April 15, 2024*

Honoring service members. The Postal Service proudly partners with the U.S. Department of Veterans Affairs to provide burial flags to families of deceased veterans. In 2023, the Postal Service provided 374,790 burial flags.



## NEWSPAPERS

and the U.S.  
Mail

*Fact #878 | Updated: April 15, 2024*

Extra! Extra! American newspapers largely owe their existence to Post Offices. As part of the Post Office Act of 1792, newspapers were permitted to be mailed at extremely low rates. By the start of the 19th century, newspapers made up the bulk of the U.S. Mail.

**1639**

first post office

*Fact #877 | Updated: April 15, 2024*

The first Post Office in America was established in a tavern in Boston in 1639.

**1993**

National Postal  
Museum Opens

*Fact #740 | Updated: April 15, 2024*

In 1993, the Smithsonian's National Postal Museum opened. This museum is dedicated to the preservation, study and presentation of postal history and philately.

The Smithsonian's National Postal Museum offers exhibits tracing the history of the postal system in the United States. It houses nearly six million postal-related items — mostly stamps, but also postal stationery, greeting cards, covers and letters, mailboxes, postal vehicles, handstamps, metering machines, patent models, uniforms, badges, and other objects related to postal history and philately. The museum's library, with more than 40,000 volumes and manuscripts, is open to the public by appointment. In 2013, the William H. Gross Stamp Gallery — the largest in the world — opened at the museum.

For more information, go to [postalmuseum.si.edu](http://postalmuseum.si.edu)  
(<http://postalmuseum.si.edu>).

**BOLGER**  
center

*Fact #817 | Updated: April 15, 2024*

Located in Maryland, the William F. Bolger Center is a premier leadership development and conference center servicing both Postal Service and external clients. It is the only hotel in the country featuring an on-site Smithsonian Institution exhibit.

The William F. Bolger Center is a Postal Service-owned state of the art training facility located on 83 beautiful acres in Potomac, Maryland. It was built in the 1930's as a Catholic convent by the Sisters of Mercy.

In the 1980's, it was purchased by the U.S. Postal Service as a training center.

Named for William F. Bolger (March 13, 1923 – August 21, 1989), the 65<sup>th</sup> Postmaster General of the United States from March 15, 1978 to January 1, 1985.







## USPS Headquarters

*Fact #800 | Updated: April 15, 2024*

The U.S. Postal Service Headquarters building is located in Washington, D.C., just a few blocks south of the National Mall.

Postal Service Headquarters, 1973–Present

Vlastimil Koubek designed the present Postal Service Headquarters building, which is located in Washington, D.C., just a few blocks south of the National Mall.



Post Office Department Headquarters, 1899–1934

This granite building on Pennsylvania Avenue, not far from the White House, was the last to simultaneously house both postal headquarters and the Washington, D.C., Post Office. Horse-drawn wagons brought mail to the building in its early years. By the time postal Headquarters moved to a larger building, almost all mail was carried by motor vehicles.



## 1863 free city delivery

*Fact #779 | Updated: April 16, 2024*

An Act of Congress of March 3, 1863, effective July 1, 1863, provided that free city delivery be established at Post Offices where income from local postage was more than sufficient to pay all expenses of the service. For the first time, Americans had to put street addresses on their letters.

In the late 19th century, free home delivery of mail was introduced — first in cities, then in rural areas — and letter carriers became familiar, trusted visitors to homes and businesses across the country.

Before 1863, postage paid only for the delivery of mail from Post Office to Post Office. Citizens picked up their mail, although in some cities they could pay an extra one- or two-cent fee for letter delivery or use private delivery firms. Among the postal reforms suggested by Postmaster

General Montgomery Blair in his 1862 report to the President was free delivery of mail by salaried letter carriers, which he felt would “greatly accelerate deliveries, and promote the public convenience.” He reasoned that if the system of mailing and receiving letters was more convenient, people would use it more often, and pointed to increasing postal revenues in England, which already had adopted free city delivery.

Congress agreed. An Act of Congress of March 3, 1863, effective July 1, 1863, provided that free city delivery be established at Post Offices where income from local postage was more than sufficient to pay all expenses of the service. For the first time, Americans had to put street addresses on their letters.



## OWNEY the postal dog

*Fact #776 | Updated: April 16, 2024*

On an autumn day in 1888, a shaggy pup took his first steps toward becoming a postal legend when he crept into the Albany, New York, Post Office. Postal employees allowed him to stay and named him Owney.

At first, Owney stayed close to the Post Office, but he soon began riding mail wagons to the train depot and then rode the railway mail car down to New York City and back to Albany. As Owney traveled farther, his friends at the Albany Post Office feared he might wander too far away to find his way home again, so they purchased a leather collar with a tag reading “Owney, Post Office, Albany, N.Y.” Railway mail clerks recorded Owney’s travels by attaching metal baggage tags to his collar to identify the rail lines he traveled on. He was soon weighed down by his collection of tags. Postmaster General John Wanamaker presented Owney with a little jacket to distribute their weight more evenly.

Owney took to traveling farther and staying away longer, eventually visiting Mexico, Canada, Japan, China, Singapore, Suez, Algiers, and the Azores. While being shown off to an Ohio newspaper reporter, Owney bit the clerk who was handling him. The Postmaster had Owney put down on June 11, 1897. Railway mail clerks chipped in money to have a taxidermist preserve Owney’s body, which then was sent to postal headquarters in Washington, D.C., for exhibit. In 1911, the Post Office Department entrusted Owney to the Smithsonian Institution. Since 1993, Owney has been part of the National Postal Museum in Washington, D.C. In 2011, Owney was honored on a commemorative U.S. postage stamp.





## POSTMASTER LINCOLN

*Fact #774 | Updated: April 16, 2024*

On May 7, 1833, 24-year-old Abraham Lincoln was appointed Postmaster of New Salem, Illinois. Lincoln served until the office was closed May 30, 1836.

Two postmasters became U.S. Presidents later in their careers — Abraham Lincoln and Harry Truman. Truman held the title and signed papers but immediately turned the position and its pay over to an assistant. Lincoln was the only President who served as a Postmaster.

On May 7, 1833, 24-year-old Lincoln was appointed Postmaster of New Salem, Illinois. Lincoln served until the office was closed May 30, 1836. Postal records show that Lincoln earned \$55.70 as Postmaster in fiscal year 1835 and \$19.48 for one quarter's work in fiscal year 1837. Besides his pay, Lincoln, as Postmaster, could send and receive personal letters free and get one daily newspaper delivered free. Mail arrived once a week. If an addressee did not collect the mail, as was the custom, Lincoln delivered it personally — usually carrying the mail in his hat. Even then, Lincoln was “Honest Abe.”



Reportedly, when the New Salem Post Office was discontinued, Lincoln had a balance of \$16 or \$18, which he took with him to Springfield, Illinois. Months later, while his close friend Dr. A. G. Henry was visiting, a Post Office agent called on Lincoln to collect the funds. Henry knew that Lincoln had been in financial straits and feared that he might not have the money. Henry recalled that just as he was about to offer Lincoln a loan, the future President:

“ . . . went over to his trunk at his boarding house, and returned with an old blue sock with a quantity of silver and copper coin tied up in it. Untying the sock, he poured the contents on the table and proceeded to count the coin, which consisted of such silver and copper pieces as the country-people were then in the habit of using in paying postage. On counting it up there was found the exact amount, to a cent, of the draft, and in the identical coin which had been received. He never used, under any circumstances, trust funds.”



## MR. ZIP

*Fact #754 | Updated: April 16, 2024*

Mr. ZIP, who has no first name, appeared in many public service announcements and advertisements urging postal customers to use the five-digit ZIP Code that was initiated on July 1, 1963. Within four years of his appearance, eight out of ten Americans knew who Mr. ZIP was and what he stood for.



With the introduction of the nine-digit ZIP Code, or ZIP+4, in 1983, Mr. ZIP went into partial retirement. His image still was printed on the selvage of some sheets of stamps, but that practice ended in January 1986. Mr. ZIP still is used occasionally by the Postal Service.



**1994**  
launched  
usps.com

*Fact #738 | Updated: April 16, 2024*

The Postal Service launched usps.com in 1994.

**1847**  
First Stamps

*Fact #733 | Updated: April 16, 2024*

1847 - U.S. postage stamps issued

The Post Office Department issued its first postage stamps on July 1, 1847. Previously, letters were taken to a Post Office, where the postmaster would note the postage in the upper right corner. The postage rate was based on the number of sheets in the letter and the distance it would travel. Postage could be paid in advance by the writer, collected from the addressee on delivery, or paid partially in advance and partially upon delivery.

On March 3, 1847, Congress authorized United States postage stamps. The first general issue postage stamps went on sale in New York City, July 1, 1847. One, priced at five cents, depicted Benjamin Franklin. The other, a ten-cent stamp, pictured George Washington. Clerks used scissors to cut the stamps from pregummed, nonperforated sheets. Only Franklin and Washington appeared on stamps until 1856, when a five-cent stamp honoring Thomas Jefferson was issued. A two-cent Andrew Jackson stamp was added in 1863. George Washington has appeared on more U.S. postage stamps than any other person.



**1775**

**First PMG**

*Fact #732 | Updated: April 16, 2024*

1775 - Benjamin Franklin was appointed the first Postmaster General by the Continental Congress

**FIRST**

**female PMG**

*Fact #704 | Updated: April 16, 2024*

The first female Postmaster General was Megan J. Brennan, Washington, DC, 2015.



**FIRST**

**African  
American on  
stamp**

*Fact #702 | Updated: April 16, 2024*

The first African American on a stamp was Booker T. Washington, 1940.



**FIRST**  
Native American  
on a stamp  
*Fact #700 | Updated: April 16, 2024*

| The first Native American on a stamp was Pocahontas, 1907.



**FIRST**  
Hispanic  
American on a  
stamp  
*Fact #699 | Updated: April 16, 2024*

| The first Hispanic American on a stamp was Adm. David Farragut, 1903.





## FIRST African American Inspector

*Fact #697 | Updated: April 17, 2024*

The first known African American postal inspector was Isaac Myers, Baltimore, MD, 1870.



Isaac Myers served from 1870 until 1879. During his employment he helped solve a number of notorious cases.

## 1ST AMERICAN woman on a stamp

*Fact #696 | Updated: April 17, 2024*

The first American woman on a U.S. postage stamp was Martha Washington, 1902.

## FIRST African American Carrier

*Fact #695 | Updated: April 17, 2024*

The first known African American mail carrier was James B. Christian, Richmond, VA, 1869.

## FIRST KNOWN African American Postmaster

*Fact #692 | Updated: April 17, 2024*

The first known African American Postmaster was James W. Mason, Sunny Side, AR, 1867.

## FIRST KNOWN female mail carrier

Fact #689 | Updated: April 17, 2024

The first known female mail carrier was Sarah Black, mail messenger, Charlestown, MD, 1845.

## FIRST FEMALE postmaster

Fact #688 | Updated: April 17, 2024

The first known female Postmaster in the United Colonies was Mary Katherine Goddard, Baltimore, MD, 1775.

## USPS An American History

Fact #687 | Updated: April 17, 2024

The United States Postal Service has a storied history, familiar to many. Our history is the history of America. Detailed information about the Postal Service and its history can be found in "The United States Postal Service: An American History" at <https://about.usps.com/who/profile/history/>.

<https://about.usps.com/who/profile/history/>  
(<https://about.usps.com/who/profile/history/>)

## 1860 African American Postmasters

Fact #686 | Updated: April 17, 2024

African Americans worked as Postmasters, clerks and carriers beginning in the 1860s — 100 years before the Civil Rights era brought wider opportunity in the American workplace.

## WOMEN postmasters

Fact #685 | Updated: April 17, 2024

Women served as Postmasters in this country more than a century before they won the right to vote.

## FLAGS at Post Offices

Fact #639 | Updated: April 17, 2024

Post Offices were first required to display the American flag in 1885 to comply with Treasury Department instructions. On Nov. 7, 2019, Post Offices were required to fly the Prisoner of War (POW)-Missing In Action (MIA) flag on the same days that the American flag is flown.

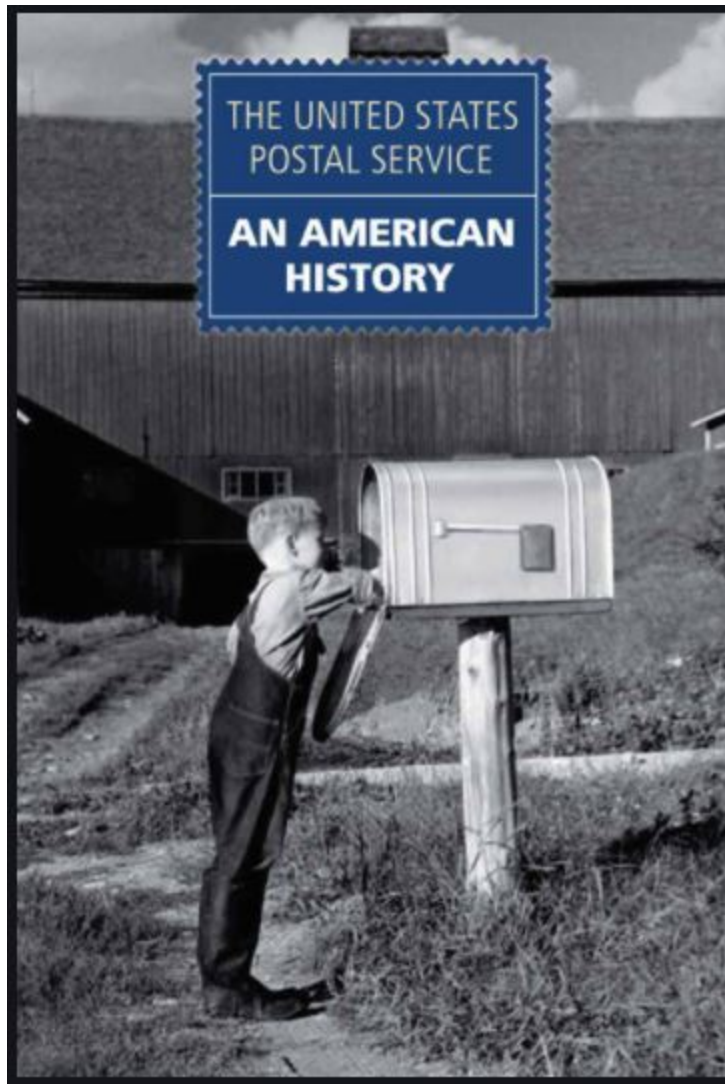
In 2023, the Postal Service replaced **36,998** U.S. flags and **43,199** POW-MIA flags.

## HISTORY of the USPS

Fact #638 | Updated: April 17, 2024

The history of the Postal Service is a large story set on a broad canvas. It is intertwined with the history of America, and it provides a lens from which to observe the evolution of the United States. This story is told beautifully in The United States Postal Service: An American History (also known as Pub. 100).

You can find the publication at [about.usps.com/publications/pub100.pdf](https://about.usps.com/publications/pub100.pdf).  
(<https://about.usps.com/publications/pub100.pdf>)



## POSTAL BULLETIN

*Fact #637 | Updated: April 17, 2024*

On time. Every time. The Postal Bulletin, a nationally distributed biweekly publication, serves as a source for official policy, procedure updates and departmental news for all Postal Service functions. It has never missed a deadline since its inception in 1880.

Go to <https://about.usps.com/resources/postal-bulletin.htm> (<https://about.usps.com/resources/postal-bulletin.htm>) to browse past issues.



## PREPAID postage stamps

*Fact #378 | Updated: April 19, 2024*

## 1,400 historic buildings

*Fact #345 | Updated: April 19, 2024*

People once had to pay for the postage on the letters they received. That resulted in a lot of mail being returned because the recipient didn't want to spend the money. Prepaid postage stamps, introduced in 1847, solved this problem.

More than 1,400 postal-owned buildings are listed on the National Register of Historic Places.

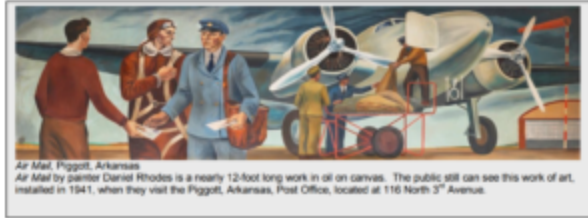
### Our History is the History of America

They are treasures. But they're not hidden. Many of our buildings are historical properties. Inside -and outside – many of our Post Offices, you'll find impressive works of art that reflect the stories of our people and our nation.

- More than 1,400 postal-owned buildings are listed on the National Register of Historic Places. More information can be found at [gov/nr/research/](http://www.nps.gov/nr/research/) (<http://www.nps.gov/nr/research/>)



- More than 1,400 murals and/or sculptures from President Roosevelt's New Deal Programs are in our Post Offices around the nation.
- Five murals were featured on First-Class postage stamps in 2019
- *The United States Postal Service: An American History* is an entire publication dedicated to our history and can be found at [usps.com/who-we-are/postal-history/welcome.htm](https://usps.com/who-we-are/postal-history/welcome.htm).



## 1893

first woman on stamp

Fact #337 | Updated: April 19, 2024

The first woman to appear on a U.S. postage stamp was Queen Isabella in 1893. The first American woman honored on stamp was Martha Washington in 1902.

The support of Queen Isabella was essential to Columbus's expedition. Though the subject of the 1-dollar stamp suggests that Queen Isabella sold her jewels to fund Columbus's expedition, in reality the Queen offered limited financial support. However, her decision to endorse Columbus's voyage in the name of Spain made the discovery of the "New World" possible.

The portrait of Queen Isabella on the 4-dollar stamp is the first portrait of a woman to appear on a US postage stamp.



## FIRST FEMALE

Postal Inspectors, 1971

Fact #327 | Updated: April 19, 2024

In 1971, the Postal Inspection Service became one of the first federal law enforcement organizations to hire female agents.

The U.S. Postal Inspection Service enforces federal laws, prevents crimes and keeps customers, employees and the mail safe. It's one of the oldest law enforcement agencies in the nation. These days our Inspectors remain on the heels of the criminals — targeting theft, disrupting drug traffickers, warning about fraud scams and more.

The Inspection Service does this with approximately 2,400 employees, including nearly 1,300 Postal Inspectors, roughly 500 uniformed Postal Police Officers and 600 professional, technical and administrative support personnel ensuring America's confidence in the U.S. Mail.

## USPS Operation Santa

*Fact #284 | Updated: April 22, 2024*

USPS Operation Santa. This 111-year-old program relies solely on random acts of kindness and the generosity of strangers. In 2023, millions of people visited [USPSOperationSanta.com](https://www.USPSOperationSanta.com). Generous customers adopted letters written to Santa and fulfilled wishes, helping families and children experience the magic of the season when they might not have otherwise, one letter to Santa at a time.



For more information, go to [USPSOperationSanta.com](https://www.USPSOperationSanta.com) (<https://www.USPSOperationSanta.com>).

In 2020, the program expanded nationwide for the first time. More than 1 million people visited [USPSOperationSanta.com](https://www.USPSOperationSanta.com). Generous customers shipped more than 21,000 packages to the families and children who wrote to Santa to help them have a happier holiday.

In 2019, the digital program continued to expand. Letters were accepted from 17 locations, and the letters could be adopted by anyone in the country. Gifts could be shipped from more than 19,000 post offices.

In 2018, the Postal Service expanded the 2017 pilot test to include 6 additional cities (Austin, Indianapolis, Philadelphia, Phoenix, San Diego, Washington DC – and Puerto Rico and Chico, CA (site of wildfires). Letters from those locations populated the website and people in those locations only could adopt them and ship from one dedicated post office per city.

In 2017, the Postal Service launched a pilot test of a digital Operation Santa option for residents of New York City. People living in New York City, within proximity of the James A. Farley building could adopt letters online and ship gifts from JAF. Puerto Rico was also added after the hurricanes that year.

## HISTORY

In 1912, Postmaster General Frank Hitchcock authorized local postmasters to allow postal employees and citizens to respond to letters addressed to Santa Claus and the program came to be known as *Operation Santa*.

In the 1940s, mail volume increased to the point where the Post Office Department invited charitable organizations and corporations to participate for philanthropic purposes —providing written responses and small gifts.

Through the years, the program has taken on a life of its own and today cities around the country have established successful programs with recognized charitable organizations, major corporations, local businesses and postal employees making a major difference in the lives of the children from coast to coast.



# Innovation in the mail

The Postal Service is always striving to increase the impact, excitement and value of mail. We've always embraced new technologies and innovation. We're firmly focused on improving the mailing experience.

People, machines, vehicles, technology — it's an impressive feat to get that card from grandma or that package from your favorite online store to your doorstep.

## POSTAL Vehicle Service Operations

*Fact #1107 | Updated: April 15, 2024*

Postal Vehicle Service (PVS) operations includes more than 10,000 uniformed motor vehicle and tractor trailer operators. The PVS fleet includes 2,202 cargo vans, 1,880 tractors and nearly 3,200 trailers. Commuting within a 170-mile radius of their facility, PVS drivers travel more than 167 million miles each year.

## EPPS 25,000 packages/hour

*Fact #831 | Updated: April 15, 2024*

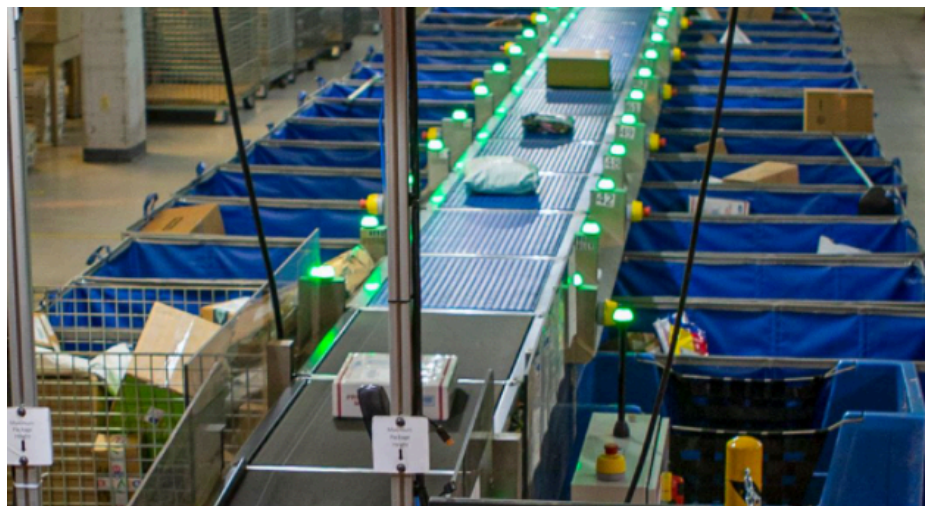
The Enhanced Package Processing System (EPPS) sorts 25,000 packages per hour.



## AUTOMATED delivery unit sorter

*Fact #824 | Updated: April 15, 2024*

The Automated Delivery Unit Sorter (ADUS) automates the sorting of smaller packages - up to 30 pounds - at a rate of 3,400 pieces per hour with a sort accuracy of 99.95 percent.





*Fact #803 | Updated: April 15, 2024*

Link, a daily news site for Postal Service employees, is available on any computer with internet access. The content is produced by a team of writers and editors based at USPS headquarters in Washington, DC. Additional contributions come from postal employees across the nation. The site is updated with new articles, photos, graphics and videos each weekday.



Regular features include “Heroes’ Corner,” a column about employees who perform heroic deeds, and “On the Move,” a weekly roundup of employees who’ve received new appointments or recognition.

Employees with postal email addresses receive a Link email each weekday with links to the most recent stories. The team also produces an end-of-week Link Recap email with stories readers might have missed, along with Link Extra emails for breaking news.

Link mobile is a mobile-friendly version of the Link site. Link mobile has all the news you'll find on the desktop version of Link, except it's formatted for easy reading on handheld smart devices. Employees and others can receive a weekly Link mobile email by subscribing at [www.usps.link](https://gcc02.safelinks.protection.outlook.com/?url=http%3A%2F%2Fwww.usps.link%2F&data=04%7C01%7Csue.brennan%40usps.gov) (<https://gcc02.safelinks.protection.outlook.com/?url=http%3A%2F%2Fwww.usps.link%2F&data=04%7C01%7Csue.brennan%40usps.gov>)

*Fact #725 | Updated: April 16, 2024*

This service solves the ever-increasing problem of customers conducting business online and not being able to print shipping labels.

With Label Broker, customers can get a shipping label on their mobile device, in the form of a matrix barcode, directly from the merchant. The customer uses the code to print a label at a Post Office or on a printer connected to *usps.com*. Label Broker is also the foundational technology that has enabled USPS Operation Santa to expand and evolve in a digital format.

For more information, go to [www.usps.com/business/label-broker.htm](http://www.usps.com/business/label-broker.htm)  
(<http://www.usps.com/business/label-broker.htm>)



**6**  
**MILLION**  
pounds of mail  
fly each day

*Fact #708 | Updated: April 16, 2024*

The Postal Service uses 140 domestic airports to fly six million pounds of mail each day.

**\$1.6**  
**BILLION**  
International  
Mail revenue

*Fact #707 | Updated: April 16, 2024*

International Mail is a \$1.6 billion business for the Postal Service.

- Most of the International Mail revenue is generated from outbound services that allow customers in the United States to send mail and packages abroad.
- The Postal Service sends **5 million pounds** of international, military, and diplomatic mail and packages weekly, using 80 international airlines, composed of 11 U.S. flag carriers and 14 foreign flag carriers, and their affiliates.
- Click-N-Ship allows customers to print shipping labels with postage for Global Express Guaranteed, Priority Mail International, Priority Mail Express International and First-Class Package International Service. For more information, go to *com/ship/* (<http://www.usps.com/ship/>).

**1.9**  
**BILLION**  
miles driven in  
2023

*Fact #701 | Updated: April 16, 2024*

To move mail using surface transportation, the Postal Service drove more than 1.9 billion miles in 2023 — more than 23.8 million trips in more than 25,000 box trucks and tractor-trailers daily.

**12.5**  
**BILLION**  
external email  
messages

*Fact #698 | Updated: April 16, 2024*

In 2023, the Postal Service email gateway system delivered more than 12.5 billion external email messages to postal customers and business partners. Roughly 82 percent of these were automated messages from Informed Delivery. The Postal Service also delivered 107 million notification emails related to COVID-19 test kits.

- With one of the largest corporate email systems, the Postal Service handled more than **6 million** legitimate emails a day in 2023, delivered to more than **195,000** email accounts. But some emails are blocked due to:
  - Spam: More than **2 million** spam email messages were blocked monthly.
  - Content: More than **1 million** emails were blocked monthly due to malicious content including phishing, brand spoofing and suspicious URLs being detected.
  - Malware: More than **12,000** email messages were blocked monthly due to malware.
  - Phishing: More than **815,000** phishing email messages were blocked monthly.
  - On average, 5 percent of the **109 million** email messages received from external senders were blocked monthly for the safety of the Postal Service network and email users.

**5**  
**MILLION**  
emails blocked  
monthly

*Fact #694 | Updated: April 17, 2024*

On average, more than 5 million emails from external senders are blocked each month to protect the Postal Service network.

With one of the largest corporate email systems, the Postal Service handled more than **3.6 million** legitimate emails a day in 2023, delivered to more than **195,000** email accounts. But some emails are blocked due to:

- Spam: More than **2 million** spam email messages were blocked monthly.
- Content: More than **1 million** emails were blocked monthly due to malicious content including phishing, brand spoofing and suspicious URLs being detected.
- Malware: More than **12,000** email messages were blocked monthly due to malware.
- Phishing: More than **815,000** phishing email messages were blocked monthly.
- On average, 5 percent of the **109 million** email messages received from external senders were blocked monthly for the safety of the Postal Service network and email users.

**110**  
petabytes of  
storage

*Fact #690 | Updated: April 17, 2024*

The Postal Service has 110 petabytes of storage capacity — equivalent to playing more than 244,000 years of songs on an MP3 player, with no repeats.

**DATA**  
driven

*Fact #654 | Updated: April 17, 2024*

The Postal Service uses data not only to ensure its operations run smoothly, but also to help businesses make better use of the mail. Its mission is to provide the right information to the right people in real time using advanced technology.

## TECHNOLOGY enabled

Fact #653 | Updated: April 17, 2024

The Postal Service uses a vast network of people and advanced technologies to collect, process, transport and accurately deliver the nation's mail in an increasingly digital world.

## PATENTLY the best

Fact #647 | Updated: April 17, 2024

Patently the best. The United States Patent and Trademark Office has issued more than 500 patents to the United States Postal Service.



## LEAVING our mark

Fact #646 | Updated: April 17, 2024

Leaving a mark! The Postal Service has 385 domestic and 1,000 foreign trademark registrations.

## MASTER of our domains

Fact #645 | Updated: April 17, 2024

Master of our domains. The Postal Service owns 1,958 internet domains.

## 75.9 BILLION seamless mail pieces

Fact #545 | Updated: April 17, 2024

The Seamless Acceptance program automates the payment verification of commercial mailings by leveraging electronic documentation (eDoc), Intelligent Mail barcodes and information collected from both handheld sampling devices and mail processing equipment scans. In 2023, the Seamless Acceptance program accepted 75.9 billion mail pieces from 2,511 mailers.

## 1,121 eInduction mailers

Fact #544 | Updated: April 17, 2024

The eInduction process simplifies mail induction by using eDoc, Intelligent Mail container barcodes and handheld scanner technologies to verify the payment and preparation of commercial mail containers. In 2023, 1,121 mailers took advantage of eInduction.

## 44.1 BILLION in EPS revenue

Fact #543 | Updated: April 17, 2024

The Enterprise Payment System (EPS) allows customers to pay for and manage their use of Postal Service products and services online, using an integrated single payment account. In 2023, EPS collected \$44.1 billion in revenue, which is a 4.5 percent increase over 2022.

## \$16.6 B in eVS revenue

Fact #541 | Updated: April 17, 2024

The Electronic Verification System (eVS) allows high-volume package mailers and package consolidators to document and pay for postage, including extra service fees, using electronic manifest files. In 2023, eVS processed 4.8 billion packages from 3,225 customers and collected \$16.6 billion in revenue, representing an 8 percent increase in revenue from 2022.



## \$114 MILLION in short-paid revenue

*Fact #540 | Updated: April 17, 2024*

## STAMP printing technology

*Fact #512 | Updated: April 17, 2024*

The Automated Package Verification (APV) program automates the detection and collection of postage due for mail pieces with insufficient postage using automated package processing equipment. The APV program collected \$114.2 million in short-paid revenue in 2023.

The Postal Service releases several stamps each year that highlight innovative stamp printing technologies.

In 2023, those stamps were:

- The Lunar New Year — Year of the Rabbit stamp, part of the Celebrating Lunar New Year stamp series, had intricate gold and teal foil in the stamp artwork and selvage.
- The Endangered Species stamps showcased photographs of 20 endangered animals found within the 50 states and U.S. territories, as well as two North American species living near U.S. borders. The stamps were printed with a matte and spot gloss.
- The Thinking of You stamps featured whimsical artwork and stickers with messages of encouragement for use on envelopes.
- The \$10 Floral Geometry stamp included (<https://facts.usps.com/wp-content/uploads/USPS23STA020B.tif>) a watercolor background and silver foil-stamped designs and typography creating a sophisticated look.



## SYSTEMS At Work

Fact #396 | Updated: April 17, 2024

The daily operations performed by the Postal Service depend on an astonishing network of people and technologies that collect, transport, process and deliver the nation's mail.

## Systems at Work

The daily operations performed by the Postal Service depend on an astonishing network of people and technologies that collect, transport, process and deliver the nation's mail. The Postal Service operates hundreds of mail processing and distribution centers across the country. The employees in these facilities accept, sort and dispatch the nation's mail.

- Postal Vehicle Service (PVS) operations includes more than **10,000** uniformed motor vehicle and tractor trailer operators. The PVS fleet includes **2,202** cargo vans, **1,880** tractors and nearly **3,200** Commuting within a 170-mile radius of their facility, PVS drivers travel more than **167 million miles** each year.

- To move mail using surface transportation, the Postal Service drove more than **9 billion miles** in 2023 — more than **23.8 million trips** in more than **25,000** box trucks and tractor-trailers daily.
- To move mail through the air, the Postal Service flies **6 million pounds** of mail per day, using more than 140 domestic airports.
- The Los Angeles Processing and Distribution Center is the largest processing facility at 725 million square feet.
- The Postal Service is the world leader in optical character recognition (OCR) technology, with machines reading nearly 98 percent of all hand-addressed letters and 99.5 percent of machine-printed mail.
- The Postal Service:
  - Deployed more than 150 new package processing systems in 2023, which increased package processing by 4.6 million pieces daily. The new machines enable the fleet of parcel sorters to now process 46 million packages daily.
  - Has **365** automated guided vehicles (AGVs) in 25 facilities. AGVs use sensors and navigation technology to move around processing facilities without human involvement.
  - Has one of the largest material-handling systems in the world for moving mail. There are more than 200 miles of conveyors within postal facilities.
  - Has the largest gantry robotic fleet in the world with **165** robotics systems moving **300,000** mail trays per day.

The Postal Service operates more than **8,500** pieces of automated equipment that process and sort U.S. Mail.

- The largest piece of automated equipment, the **Enhanced Package Processing System (EPPS)**, sorts packages at **25,000** pieces per hour
- The **Flex Rover Sorter (FRS)** is a wheeled robot that sorts large and nonmachinable packages into containers. There are more than **600** rovers deployed at 35 sites across the country.
- The **High Output Package Sorter (HOPS)** is the newest piece of automated equipment. It can sort packages at a rate of **8,500** pieces per hour.
- The **Automated Delivery Unit Sorter (ADUS)** sorts packages and bundles of mail at a rate of **3,400** pieces per hour with a sort accuracy of 99.95 percent
- The **Robotic Containerization System (RCS)** sorts trays and automatically loads rolling containers or pallets
- The **Advanced Facer Canceller System (AFCS)** positions letter mail and postmarks stamps at **36,000** pieces per hour
- The **Delivery Barcode Sorter (DBCS)** reads barcodes and sorts letters at **36,000** pieces per hour
- The **Automated Flat Sorting Machine (AFSM)** sorts flat mail at **17,000** pieces per hour
- The **Automated Package Processing System (APPS)** sorts packages and bundles of mail at **9,500** pieces per hour

- The **High Throughput Parcel Sorter (HTPS)** sorts packages and bundles at **15,000** pieces per hour
- The **Automated Parcel and Bundle Sorter (APBS)** sorts packages and bundles of mail at **6,500** pieces per hour
- **Tray sorting machines** sort more than **10 million** trays per day through conveyor systems
- **Mobile Delivery Devices (MDDs)** provide real-time scanning for daily delivery operations. There are more than **285,000** MDDs in use nationwide.
- Check out the **Systems at Work** (<http://www.youtube.com/watch?v=WX16-52bHvg>) video for more information ([youtube.com/watch?v=WX16-52bHvg](http://www.youtube.com/watch?v=WX16-52bHvg)) (<http://www.youtube.com/watch?v=WX16-52bHvg>)

**10**  
million trays

*Fact #394 | Updated: April 17, 2024*

Tray sorting machines sort more than 10 million trays per day through conveyor systems.

**8,500**  
**PIECES**  
of processing  
equipment

*Fact #384 | Updated: April 17, 2024*

The Postal Service operates more than 8,500 pieces of automated equipment that processes and sorts nearly half the world's mail.

**285,000**  
Mobile Delivery  
Devices

*Fact #374 | Updated: April 19, 2024*

Mobile Delivery Devices (MDDs) provide real-time scanning for daily delivery operations. There are more than 285,000 MDDs in use nationwide.

**48,000**  
point-of-sale  
terminals

*Fact #365 | Updated: April 19, 2024*

Retail Systems Software (RSS point-of-sale software) is used to serve customers with their mailing and shipping needs at 20,459 locations. RSS is currently installed on 48,223 window service, military, business partner and self-service kiosk systems.

**3.6**  
**MILLION**  
corporate emails  
daily

*Fact #338 | Updated: April 19, 2024*

With one of the largest corporate email systems, the Postal Service handled more than 3.6 million legitimate emails a day in 2023, delivered to more than 195,000 email accounts.

- But some emails are blocked due to:
  - Spam: More than **2 million** spam email messages were blocked monthly.
  - Content: More than **1 million** emails were blocked monthly due to malicious content including phishing, brand spoofing and suspicious URLs being detected.
  - Malware: More than **12,000** email messages were blocked monthly due to malware.
  - Phishing: More than **815,000** phishing email messages were blocked monthly.
  - On average, 5 percent of the **109 million** email messages received from external senders were blocked monthly for the safety of the Postal Service network and email users.



- In 2023, the Postal Service email gateway system delivered more than **5 billion** external email messages to postal customers and business partners. Roughly 82 percent of these were automated messages from Informed Delivery. The Postal Service also delivered **107 million** notification emails related to COVID-19 test kits.

## OUTER SPACE postage stamp

Fact #332 | Updated: April 19, 2024

Out of this world! A postage stamp was inside the New Horizons spacecraft that made a flyby of Pluto in July 2015. That's the farthest distance traveled by a postage stamp - more than 3 billion miles. So noted by the Guinness World Records.

The “*Pluto: Not Yet Explored*” 29-cent stamp was part of a set of solar system stamps that were issued in 1991.



## CONNECTING USPS and mailers

Fact #324 | Updated: April 19, 2024

Postal Customer Councils (PCCs). These Postal Service-affiliated networks connect business mailers with local Post Office leadership to develop more effective and profitable mailings through training and information sharing. Since the 1960s, PCCs have been the go-to local resource for helping mailers learn, innovate and build their business. More information can be found at [postalpro.usps.com/pcc](https://postalpro.usps.com/pcc).

Find more information at [postalpro.usps.com/pcc](https://postalpro.usps.com/pcc) (<http://postalpro.usps.com/pcc>).

## MAILERS providing technical advice

Fact #323 | Updated: April 19, 2024

Postmaster General's Mailers Technical Advisory Committee (MTAC). Representing select mailing associations, this group works to enhance the value of mail by providing technical advice and recommendations to the Postal Service. More information can be found at [postalpro.usps.com/mtac](https://postalpro.usps.com/mtac).

**36,000**  
stamps  
postmarked per  
hour

*Fact #314 | Updated: April 22, 2024*

The Advanced Facer Canceller System positions letter mail and postmarks stamps at 36,000 pieces per hour.

The daily operations performed by the Postal Service depend on an astonishing network of people and technologies that collect, transport, process and deliver the nation's mail.

**200**  
miles of  
conveyors

*Fact #313 | Updated: April 22, 2024*

The Postal Service is one of the largest material-handling systems in the world for moving mail. There are more than 200 miles of conveyors within postal facilities.

**OPTICAL**  
character  
recognition

*Fact #312 | Updated: April 22, 2024*

The Postal Service is the world leader in optical character recognition technology, with machines reading nearly 98 percent of all hand-addressed letters and 99.5 percent of machine-printed mail.

**TRACKING**  
Intelligent Mail

*Fact #292 | Updated: April 22, 2024*

A unique Intelligent Mail barcode identifies individual pieces of mail, trays, sacks and containers to track them through the postal processing system from induction to delivery.

**EDDM**  
more than \$5B  
in revenue

*Fact #291 | Updated: April 22, 2024*

Every Door Direct Mail (EDDM). This online service began in 2011 and is designed to help business mailers direct their Marketing Mail pieces to customers in a select neighborhood, city or ZIP Code. Since 2011, more than 33 billion pieces of EDDM have been sent, resulting in \$5 billion in revenue. Nearly 3 billion pieces were sent in 2023, equating to \$700 million in revenue.



The USPS Printer Directory provides customers free access to local print, design and mail preparation services for Every Door Direct Mail and other direct mail products through a searchable database and mapping program. More than 700 listings populate the directory that serves small and medium-size businesses nationwide.

**60**  
**MILLION**  
Informed  
Delivery  
Customers

*Fact #203 | Updated: April 22, 2024*

With Informed Delivery service, you can digitally preview your incoming mail and manage your packages from a computer, tablet or mobile device. More than 60 million customers have enrolled since it was launched in 2017.

Informed Delivery provides eligible residential customers with a digital preview of their household's incoming mail scheduled to arrive soon. Users can view greyscale images of the exterior, address side of incoming letter-sized mail pieces (not the inside contents) via email or an online dashboard.

Informed Delivery also allows customers to track packages delivered by the Postal Service and see when they will be delivered.

For more information and to sign up, go to [usps.com/informedelivery](https://usps.com/informedelivery) (<http://usps.com/informedelivery>).



**443,700**  
handheld  
scanners

*Fact #38 | Updated: April 22, 2024*

The Postal Service communications network supports and maintains more than 157,681 workstations, 41,000 server computers, 52,689 printers, 27,909 smartphones, 640 tablets and 443,700 handheld scanners.

The Postal Service communications network contains more than **249,000** provisioned subnets that connect more than **2 million** devices

**165**  
robotics  
systems

*Fact #36 | Updated: April 22, 2024*

The Postal Service has the largest gantry robotic fleet in the world using 165 robotics systems to move 300,000 mail trays per day.

# Security.

## Law Enforcement. Preserving the Trust.

**We protect you and your mail.**

The U.S. Postal Inspection Service is the federal law enforcement, crime prevention, and security arm of the U.S. Postal Service. Founded by Benjamin Franklin and established on August 7, 1775, the Inspection Service is one of the nation's oldest federal law enforcement agencies.

### POSTAL INSPECTION SERVICE

*Fact #815 | Updated: April 15, 2024*

Enforcing the law. Established Aug. 7, 1775. The U.S. Postal Inspection Service enforces federal laws, prevents crimes and keeps customers, employees and the mail safe.

It's one of the oldest law enforcement agencies in the nation. Postal Inspectors remain on the heels of the criminals — targeting theft, disrupting drug traffickers, warning about fraud scams and more.

The Inspection Service does this with approximately 2,400 employees — including nearly 1,300 Postal Inspectors, roughly 500 uniformed Postal Police Officers and 600 professional, technical and administrative support personnel — all working to ensure America's confidence in the U.S. Mail.

### FIRST African American Inspector

*Fact #697 | Updated: April 17, 2024*

The first known African American postal inspector was Isaac Myers, Baltimore, MD, 1870.



Isaac Myers served from 1870 until 1879. During his employment he helped solve a number of notorious cases.

### DELIVERING Justice to Opioid Dealers

*Fact #684 | Updated: April 17, 2024*

The Inspection Service is committed to using the most advanced technology to stop fentanyl traffickers.

**Delivering Justice to Opioid Dealers**



The Inspection Service is committed to using the most advanced technology to stop fentanyl traffickers. Postal inspectors use data, forensics and citizens' tips to protect Americans and apprehend opioid dealers who send illegal drugs through the mail.

- 4,574 synthetic opioids seizures by the Inspection Service between Oct. 1, 2018 and Sept. 30, 2023
- 9,210 pounds of synthetic opioids seized by the Inspection Service between fiscal years 2019 and 2023
- 1,702 synthetic opioid seizures totaling 4,311 pounds in fiscal years 2023
- More information can be found at [uspis.gov/the-opioid-epidemic](https://gcc02.safelinks.protection.outlook.com/?url=http%3A%2F%2Fwww.uspis.gov%2Fthe-opioid-epidemic&data=04%7C01%7CCFisher%40uspis.gov%7C7ceac6746d4) (<https://gcc02.safelinks.protection.outlook.com/?url=http%3A%2F%2Fwww.uspis.gov%2Fthe-opioid-epidemic&data=04%7C01%7CCFisher%40uspis.gov%7C7ceac6746d4>)

**2,001**  
arrests

*Fact #674 | Updated: April 17, 2024*

In 2023, the Inspection Service reported 2,001 arrests pertaining to illegal narcotics-related cases.

### Keeping America's postal system secure — 2023 stats

- 4,728 arrests. 4,103 convictions. Primarily prohibited mail, mail theft, and assaults and robberies of employees.
- More than \$600,000 in misappropriated or stolen mail transport equipment recovered.
- 1,804 suspicious mail incidents investigated.
- 2,001 arrests for illegal narcotics.
- 6,721 responses to reports of violent criminal activity, including 576 credible threats and assaults against postal employees. 450 arrests. 306 convictions.
- 1,566 assets seized, worth more than \$402 million.
- Six investigations into the use of mail in the sexual exploitation of children. Three arrests. Five convictions. To date, more than 20,000 child sexual abuse victims identified.
- More than 1 million items, including 378 terabytes of data, examined by forensic scientists and specialists in the Postal Inspection Service's Forensic Laboratory Services. 2,262 suspects identified.

**OPERATION**  
Protect Veterans

*Fact #330 | Updated: April 19, 2024*

In 2023, Postal Inspectors continued their partnership with AARP through Operation Protect Veterans to raise awareness of scams that target military veterans.

Additional information on Operation Protect Veterans

([https://gcc02.safelinks.protection.outlook.com/?](https://gcc02.safelinks.protection.outlook.com/?url=https%3A%2F%2Fwww.uspis.gov%2Fveterans%2F&data=04%7C01%7C)

[url=https%3A%2F%2Fwww.uspis.gov%2Fveterans%2F&data=04%7C01%7C](https://gcc02.safelinks.protection.outlook.com/?url=https%3A%2F%2Fwww.uspis.gov%2Fveterans%2F&data=04%7C01%7C))

**1,566**  
assets seized

*Fact #329 | Updated: April 19, 2024*

The Inspection Service seized 1,566 assets worth \$402 million.

## FIRST FEMALE Postal Inspectors, 1971

*Fact #327 | Updated: April 19, 2024*

In 1971, the Postal Inspection Service became one of the first federal law enforcement organizations to hire female agents.

The U.S. Postal Inspection Service enforces federal laws, prevents crimes and keeps customers, employees and the mail safe. It's one of the oldest law enforcement agencies in the nation. These days our Inspectors remain on the heels of the criminals — targeting theft, disrupting drug traffickers, warning about fraud scams and more.

The Inspection Service does this with approximately 2,400 employees, including nearly 1,300 Postal Inspectors, roughly 500 uniformed Postal Police Officers and 600 professional, technical and administrative support personnel ensuring America's confidence in the U.S. Mail.

## 1 MILLION items examined

*Fact #326 | Updated: April 19, 2024*

In 2023, more than 1 million items, including 378 terabytes of data, were examined by forensic scientists and specialists in the Postal Inspection Service's Forensic Laboratory Services. 2,262 suspects identified.

## EMMY AWARD winning TV show

*Fact #325 | Updated: April 19, 2024*

The Inspection Service uses various media platforms to educate the American public about scams and how to avoid them. A weekly TV series, The Inspectors, was based on real-life Postal Inspection Service cases. 104 episodes of the Emmy Award-winning scripted drama ran for four seasons on network television, reaching more than 200 million viewers.

## EDUCATION for consumers

*Fact #317 | Updated: April 22, 2024*

National Consumer Protection Week. During the Federal Trade Commission's annual awareness campaign, the Postal Service and U.S. Postal Inspection Service provide customers with education, tools and information to combat identity theft and mail fraud.

More information can be found at

- NCPW 2024 – United States Postal Inspection Service ([uspis.gov](https://www.uspis.gov/ncpw2024#:~:text=During%20National%20Consumer%20Protection%20Week,the,wants%20the%20public%20to%20beware%20of%20In)) (<https://www.uspis.gov/ncpw2024#:~:text=During%20National%20Consumer%20Protection%20Week,the,wants%20the%20public%20to%20beware%20of%20In>)
- Celebrate National Consumer Protection Week. Talk about scams | Consumer Advice (ftc.gov) (<https://consumer.ftc.gov/consumer-alerts/2024/03/celebrate-national-consumer-protection-week-talk-about-scams>)

# SANCTITY and Security of the US Mail

*Fact #301 | Updated: April 22, 2024*

The Postal Inspection Service works aggressively and takes all practicable measures to ensure the sanctity and security of the U.S. Mail.

## Keeping America's postal system secure — 2023 stats

- 4,728 arrests. 4,103 convictions. Primarily prohibited mail, mail theft, and assaults and robberies of employees.
- More than \$600,000 in misappropriated or stolen mail transport equipment recovered.
- 1,804 suspicious mail incidents investigated.
- 2,001 arrests for illegal narcotics.
- 6,721 responses to reports of violent criminal activity, including 576 credible threats and assaults against postal employees. 450 arrests. 306 convictions.
- 1,566 assets seized, worth more than \$402 million.
- Six investigations into the use of mail in the sexual exploitation of children. Three arrests. Five convictions. To date, more than 20,000 child sexual abuse victims identified.
- More than 1 million items, including 378 terabytes of data, examined by forensic scientists and specialists in the Postal Inspection Service's Forensic Laboratory Services. 2,262 suspects identified.

**1,804**  
suspicious mail  
incidents

*Fact #299 | Updated: April 22, 2024*

Postal Inspectors responded to and investigated 1,804 suspicious mail incidents in 2023.

**\$600,000**  
recovered

*Fact #298 | Updated: April 22, 2024*

In 2023, Postal Inspectors recovered more than \$600,000 in misappropriated or stolen mail transport equipment.

**WE'RE**  
secure

*Fact #88 | Updated: April 22, 2024*

We're secure. U.S. Mail is protected by more than 200 federal laws enforced by the Postal Inspection Service, one of the nation's oldest law enforcement agencies.

**4,728**  
arrests

*Fact #41 | Updated: April 22, 2024*

In 2023 Postal Inspectors reported 4,728 arrests and 4,103 convictions related to postal crimes, primarily those involving mail theft, assaults and robberies of employees, mail fraud and prohibited mailings.

## Keeping America's postal system secure — 2023 stats

- More than \$600,000 in misappropriated or stolen mail transport equipment recovered.
- 1,804 suspicious mail incidents investigated.
- 2,001 arrests for illegal narcotics.
- 6,721 responses to reports of violent criminal activity, including 576 credible threats and assaults against postal employees. 450

arrests. 306 convictions.

- 1,566 assets seized, worth more than \$402 million.
- Six investigations into the use of mail in the sexual exploitation of children. Three arrests. Five convictions. To date, more than 20,000 child sexual abuse victims identified.
- More than 1 million items, including 378 terabytes of data, examined by forensic scientists and specialists in the Postal Inspection Service's Forensic Laboratory Services. 2,262 suspects identified.



# Map facts

Discover fun and interesting geographic facts about the U.S. Postal Service!

## LARGEST ZIP in Contiguous US

*Fact #971 | Updated: April 15, 2024*

The largest ZIP Code in the contiguous U.S. is 89049, Tonopah, NV, at 10,821 square miles.

Twenty-four of the top 25 largest ZIP Codes in the country are located in Alaska – ranging from the largest, 99734, at more than 30,000 square miles to 99741 at 7,600 square miles. The 14th spot goes to Nevada, 89049.



## LARGEST ZIP in continental US

*Fact #969 | Updated: April 15, 2024*

The largest ZIP Code in the continental U.S. is 99734, Prudhoe Bay, AK, at 30,683 square miles.

Twenty-four of the top 25 largest ZIP Codes in the country are located in Alaska – ranging from the largest, 99734, at more than 30,000 square miles to 99741 at 7,600 square miles. The 14th spot goes to Nevada, 89049.



## USPS Headquarters

*Fact #800 | Updated: April 15, 2024*

The U.S. Postal Service Headquarters building is located in Washington, D.C., just a few blocks south of the National Mall.

### Postal Service Headquarters, 1973–Present

Vlastimil Koubek designed the present Postal Service Headquarters building, which is located in Washington, D.C., just a few blocks south of the National Mall.



### Post Office Department Headquarters, 1899–1934

This granite building on Pennsylvania Avenue, not far from the White House, was the last to simultaneously house both postal headquarters and the Washington, D.C., Post Office. Horse-drawn wagons brought mail to the building in its early years. By the time postal Headquarters moved to a larger building, almost all mail was carried by motor vehicles.



## POSTMASTER LINCOLN

*Fact #774 | Updated: April 16, 2024*

On May 7, 1833, 24-year-old Abraham Lincoln was appointed Postmaster of New Salem, Illinois. Lincoln served until the office was closed May 30, 1836.

Two postmasters became U.S. Presidents later in their careers — Abraham Lincoln and Harry Truman. Truman held the title and signed papers but immediately turned the position and its pay over to an assistant. Lincoln was the only President who served as a Postmaster.

On May 7, 1833, 24-year-old Lincoln was appointed Postmaster of New Salem, Illinois. Lincoln served until the office was closed May 30, 1836. Postal records show that Lincoln earned \$55.70 as Postmaster in fiscal year 1835 and \$19.48 for one quarter's work in fiscal year 1837. Besides his pay, Lincoln, as Postmaster, could send and receive personal letters free and get one daily newspaper delivered free. Mail arrived once a week. If an addressee did not collect the mail, as was the custom, Lincoln delivered it personally — usually carrying the mail in his hat. Even then, Lincoln was “Honest Abe.”

Reportedly, when the New Salem Post Office was discontinued, Lincoln had a balance of \$16 or \$18, which he took with him to Springfield, Illinois. Months later, while his close friend Dr. A. G. Henry was visiting, a Post Office agent called on Lincoln to collect the funds. Henry knew that Lincoln had been in financial straits and feared that he might not have the money. Henry recalled that just as he was about to offer Lincoln a loan, the future President:

“ . . . went over to his trunk at his boarding house, and returned with an old blue sock with a quantity of silver and copper coin tied up in it. Untying the sock, he poured the contents on the table and proceeded to count the coin, which consisted of such silver and copper pieces as the country-people were then in the habit of using in paying postage. On counting it up there was found the exact amount, to a cent, of the draft, and in the identical coin which had been received. He never used, under any circumstances, trust funds.”



## SHIP mail delivery

*Fact #772 | Updated: April 16, 2024*

Ship Ahoy! The JW Westcott is a 45-foot contract mail boat out of Detroit that delivers mail to passing ships on the Detroit River. The JW Westcott has its own ZIP Code — 48222.



This is the J.W. *Westcott II* approaching a Canadian freighter on the Detroit River

## POST OFFICE with walk-in freezers

*Fact #770 | Updated: April 16, 2024*

The Peach Springs, AZ, Post Office has walk-in freezers for food destined for delivery by mule train to the bottom of the Grand Canyon.



## STAMPS in caves

*Fact #768 | Updated: April 16, 2024*

No troglodytes here! The Stamp Fulfillment Service facility, located in Kansas City, MO, is located in a limestone cave 150 feet beneath the ground. It is the Postal Service's only facility located underground.

The consistent, year-round temperatures and humidity levels in the caves allow the stamps to be maintained in mint-quality condition. The underground facility also keeps the inventory and employees safe from snow, flooding, winds and tornadic activity common in the Midwest.

## MULE TRAIN delivery

*Fact #310 | Updated: April 22, 2024*

The most unusual delivery method used by the Postal Service is a mule train in Arizona. The mules carry mail, food and supplies down a 9-mile trail to the Havasupai Indians at the bottom of the Grand Canyon.

**Got mules?** The most unusual mode of delivery used by the Postal Service is the mule train.

Since the 1930s, mules have been carrying mail and goods to the Havasupai people located inside the Grand Canyon.

- 10-22 mules are used daily, along with one wrangler on horseback, 5 days a week, traveling 9 miles down into the canyon to the Supai Post Office.
- It takes **3 hours** to get down and **5 hours** to get back up
- On the way back up, the wrangler untethers the mules and sends them back up on their own
- Each mule can carry up to **200 pounds** and the weight is loaded equally on each side for balance

- The Supai Post Office has a special Mule Train postmark







## MOST COMMON city names

*Fact #309 | Updated: April 22, 2024*

Ben, this one's for you! Franklin is the most common city name — 28 of them — with Clinton, Madison and Washington tied for second (27 each) and Chester, Greenville, Marion and Springfield at third (25). The most common Post Office name is Clinton, with 26 locations, followed by Madison at second (25) and Franklin and Washington tied for third (24).





## 33 MILE LONG Main Street

*Fact #308 | Updated: April 22, 2024*

The longest Main Street in the country is located in Island Park, ID, and is 33 miles long.



## 21,569 Main streets

*Fact #307 | Updated: April 22, 2024*

Main Street America is here and here and... The most common street name in the country is Main — 21,569 of them — followed by Second with 17,196, Third with 16,002 and First with 14,963. The longest Main Street, located in Island Park, ID, is 33 miles long.

## 116,628 deliveries from one office

Fact #279 | Updated: April 22, 2024

The Post Office location with the most possible street deliveries is Heritage Station in San Antonio, TX (78245, 78250, 78251, 78253) — with 116,628 deliveries.

## COLDEST Post Office

Fact #276 | Updated: April 22, 2024

Our Post Office in Utqiagvik, North Slope of Alaska -- formerly Barrow (99723) and Wainwright (99782) -- experiences the coldest temperatures.

## SHORTEST delivery route

Fact #151 | Updated: April 22, 2024

The shortest delivery route is rural route 012 in Woodinville, WA (98072) — 2.45 miles daily, delivering to 1,147 boxes.

## LONGEST delivery route

Fact #150 | Updated: April 22, 2024

The longest delivery route is rural route 001 in Sidney, MT (59270) — 195.2 miles daily, delivering to 305 boxes.

## 12345 easiest to remember

Fact #149 | Updated: April 22, 2024

The easiest to remember ZIP Code is 12345, a unique ZIP Code for General Electric in Schenectady, NY.

## HIGHEST ZIP Code

Fact #148 | Updated: April 22, 2024

The highest numbered ZIP Code is 99950 in Ketchikan, AK.

## LOWEST ZIP Code number

Fact #147 | Updated: April 22, 2024

The lowest ZIP Code number is 00501, unique for the Internal Revenue Service in Holtsville, NY.

## DOCK- TO-DOCK delivery

Fact #146 | Updated: April 22, 2024

Dock-to-dock delivery on the Magnolia River in Alabama. A 15-foot contract mail boat delivers to 176 dock-side mailboxes on a 31-mile stretch of the river.

## POST OFFICE most needing a bridge

Fact #143 | Updated: April 22, 2024

The Post Office in most need of a bridge is in Point Roberts, WA. It can be reached by car only by driving through British Columbia, Canada. Only a boat or float plane can travel directly there.



## 2ND OLDEST Post Office

Fact #141 | Updated: April 22, 2024

The second oldest Post Office location is in Castine, ME, from 1833.

## OLDEST Post Office

*Fact #140 | Updated: April 22, 2024*

## LARGEST retail space

*Fact #139 | Updated: April 22, 2024*

## SMALLEST POST OFFICE

*Fact #138 | Updated: April 22, 2024*

The Hinsdale, NH, Post Office (03451) has been located in the same building since 1816.

The largest U.S. Postal Service retail space is the James A. Farley Post Office in New York, NY (10001), at 33,100 square feet.

The smallest Post Office is located in Ochopee, FL (34141) and is 61.3 square feet. The building used to be a storage facility for irrigation pipes of an adjacent tomato farm. It was converted into a Post Office in 1953, after a fire that destroyed a previous Post Office and general store.

There is a sign beside the office that reads:

### OCHOPEE POST OFFICE

Considered to be the smallest post office in the United States, this building was formerly an irrigation pipe shed belonging to the J.T. Gaunt Company tomato farm. It was hurriedly pressed into service by postmaster Sidney Brown after a disastrous night fire in 1953 burned Ochopee's general store and post office. The present structure has been in continuous use ever since – as both a post office and ticket station for Trailway's bus lines – and still services residents in a three-county area, including deliveries to Seminole and Miccosukee Indians living in the region. Daily business often includes requests from tourists and stamp collectors the world over for the famed Ochopee postmark. The property was acquired by the Wooten Family in 1992.

— Collier County Board of County Commissioners



## STUCK in the middle

*Fact #137 | Updated: April 22, 2024*

The most centered Post Office within the 48 contiguous states is located in Lebanon, KS.



**MOST  
CENTRAL**Post Office of  
them all*Fact #136 | Updated: April 22, 2024*

The most centered Post Office within all 50 states is located in Belle Fourche, SD.

**NORTHMOST**  
Utqiagvik, AK*Fact #134 | Updated: April 22, 2024*

The northernmost post office location within the 50 states is in Utqiagvik, AK (formerly Barrow).

**NORTHERNMOST**  
within 48 states*Fact #133 | Updated: April 22, 2024*

The northernmost Post Office location within the 48 contiguous states is in Angle Inlet, MN.

**SOUTHMOST**  
within the 50  
states*Fact #132 | Updated: April 22, 2024*

The southernmost Post Office location within the 50 states is located in Naalehu, HI.

**SOUTHMOST**  
within 48 states*Fact #131 | Updated: April 22, 2024*

The southernmost Post Office location within the 48 contiguous states is located in Key West, FL.

**EASTMOST**  
within the 50  
states*Fact #130 | Updated: April 22, 2024*

The easternmost Post Office location in the 50 states is in Lubec, ME.

**WESTMOST**  
within the 50  
states*Fact #129 | Updated: April 22, 2024*

The westernmost Post Office location in the 50 states is in Adak, AK.

**WESTERNMOST**  
in the 48  
contiguous  
states*Fact #128 | Updated: April 22, 2024*

The westernmost Post Office location in the 48 contiguous states is in La Push, WA.

**WETTEST**  
U.S. Post Office*Fact #127 | Updated: April 22, 2024*

The wettest Post Office is at Mt. Waialeale, near the Kapaa Post Office in Hawaii.

**LOWEST**  
U.S. Post Office*Fact #126 | Updated: April 22, 2024*

The lowest U.S. Post Office is located in Death Valley, CA (92328), at 282 feet below sea level. This is also the driest and hottest Post Office location.

**HIGHEST**  
U.S. Post Office*Fact #125 | Updated: April 22, 2024*

The highest Post Office in the United States is located in Alma, CO (80420), at 10,578 feet above sea level.

# Priority: YOU

Our priority is and always will be delivering great service that's affordable and dependable. When you ship with Priority Mail, you get free shipping supplies, flat-rate options, insurance included, USPS Tracking and easy online tools. It all adds up to one of the best values in the shipping business!

## RIDE-ON Postal vehicle

*Fact #1095 | Updated: April 15, 2024*

KID FUN. A USPS-licensed ride-on vehicle from Kid Trax was honored in 2021 as one of the best toys of the year by Good Housekeeping and Parents magazines, as well as Toy Insider.



## FASHION Collaboration

*Fact #1094 | Updated: April 15, 2024*

The Postal Service is routinely ranked among the most admired and trusted brands in the nation, so it's no surprise that businesses want to incorporate postal images and logos into their products.

In 2022, the skateboarding shoe and apparel company Vans unveiled a collection of licensed clothing, including sneakers, a cuffed beanie and a pullover hoodie.



## FINGER printing services

*Fact #1093 | Updated: April 15, 2024*

The Postal Service is working with the Federal Bureau of Investigation to offer fingerprinting services at more than 80 locations nationwide.

Fingerprinting services are offered to customers applying for an identity history summary check, which is required for adoptions, visas and other purposes. After fingerprints are taken, the information is sent to the FBI for processing.



## DMV kiosks in CA

*Fact #1092 | Updated: April 15, 2024*

fingerprinting services

Californians can now complete many tasks that would normally require a visit to the Department of Motor Vehicles by using self-service kiosks at four Postal Service locations throughout the state.

With just a few taps, customers can complete many common DMV tasks through the kiosks, including renewing vehicle registration, receiving a replacement registration card or sticker, and obtaining a vehicle record.



## INFORMED GREETINGS

*Fact #1091 | Updated: April 15, 2024*

Informed Greetings blends the traditional “mail moment” with a modern digital experience by integrating a personalized digital message into the recipient’s Informed Delivery email when they send a physical greeting card.

Customers can also select artwork that complements their card from hundreds of designs in six different categories.



## NEW Vehicles

Fact #1089 | Updated: April 15, 2024

NGDVs. Next Generation Delivery Vehicles. The Postal Service has placed an order for 106,000 vehicles with Oshkosh Defense. The order includes 66,000 electric vehicles, making it one of the largest electric fleets in the nation.



## WE deliver!

Fact #641 | Updated: April 15, 2024

The Postal Service moves mail by planes, hovercraft, trains, trucks, cars, boats, ferries, helicopters, subways, bicycles, mules and feet. #WeDeliverForYou

## LABEL BROKER

Fact #725 | Updated: April 16, 2024

This service solves the ever-increasing problem of customers conducting business online and not being able to print shipping labels.

With Label Broker, customers can get a shipping label on their mobile device, in the form of a matrix barcode, directly from the merchant. The customer uses the code to print a label at a Post Office or on a printer

connected to *usps.com*. Label Broker is also the foundational technology that has enabled USPS Operation Santa to expand and evolve in a digital format.

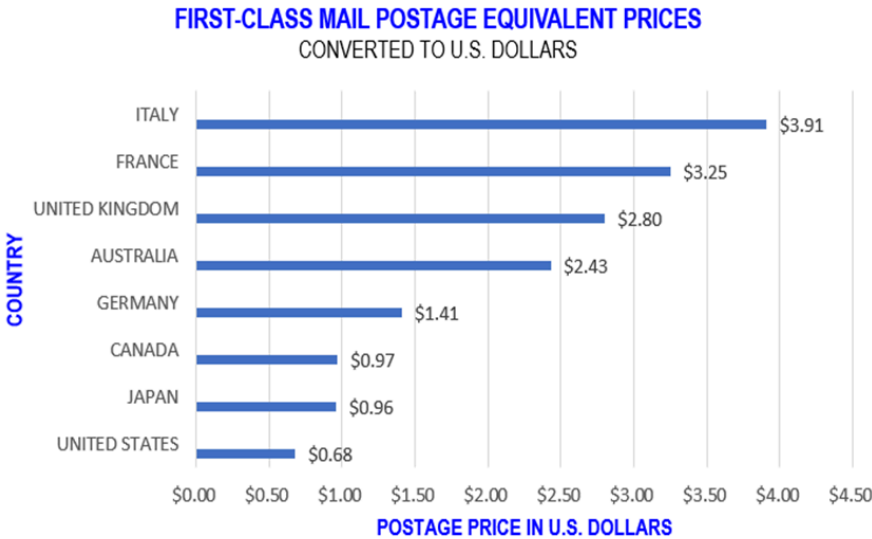
For more information, go to [www.usps.com/business/label-broker.htm](http://www.usps.com/business/label-broker.htm)  
(<http://www.usps.com/business/label-broker.htm>)



GLOBAL  
bargain

Fact #714 | Updated: April 16, 2024

The price of a First-Class postage stamp is a global bargain.



.POST  
Group

Fact #713 | Updated: April 16, 2024

The Postal Service is one of 37 members of the .POST Group. The UPU's .POST Group, created in 2013, is a trusted internet domain, established exclusively for the global postal sector and sponsored by the UPU.

The mission of the .POST Group is to support posts in providing their customers with reliable and secure web services.

- The .POST Group promotes innovation, integration and inclusion of postal activities on a uniquely secure platform, employing a rigorous UPU community membership and authentication process to deliver a safe, uncompromised and trustworthy customer experience.



- More information can be found at [upu.int/en/Universal-Postal-Union/About-UPU/Cooperatives-Boards/-POST-Group](http://www.upu.int/en/Universal-Postal-Union/About-UPU/Cooperatives-Boards/-POST-Group) (<http://www.upu.int/en/Universal-Postal-Union/About-UPU/Cooperatives-Boards/-POST-Group>)

## EXPRESS MAIL Service Cooperative

Fact #712 | Updated: April 16, 2024

The Postal Service is a member of the Express Mail Service (EMS) Cooperative. The EMS Cooperative was created by the UPU in 1999 and consists of 174 postal operators. It allows access to more than 180-member countries to provide EMS — the UPU's fastest cross-border international postal product.

The Postal Service is a member of the **Express Mail Service (EMS) Cooperative**.

- The EMS Cooperative was created by the UPU in 1999 and consists of 174 postal operators. It allows access to more than 180-member countries to provide EMS — the UPU's fastest cross-border international postal product.
- The EMS global network has the largest number of customer access points in the world, serving more than 5 billion citizens of member posts.
- EMS postal operators have the largest last mile coverage worldwide, supported by the postal delivery network.
- More information can be found at [post/en/global-network](https://www.ems.post/en/global-network) (<https://www.ems.post/en/global-network>).

## KAHALA Post Group

Fact #711 | Updated: April 16, 2024

The Postal Service is one of 11 members of the Kahala Post Group (KPG).

The Postal Service is one of 11 members of the **Kahala Posts Group (KPG)**.

- The KPG is an international alliance of the world's largest postal administrations that collaborate to improve international postal services.
- Launched in 2002 by six postal administrations, the KPG network accounts for almost half of the world's internationally recognized Express Mail Service (EMS) traffic.
- More information can be found at [co](http://www.kahalapostsgroup.com/) (<http://www.kahalapostsgroup.com/>)*m*.

## INT'L post corporation

Fact #710 | Updated: April 16, 2024

The Postal Service is one of 25 members of the International Post Corporation (IPC). The IPC is a cooperative association of posts in North America, Europe and Asia Pacific.

The Postal Service is one of 25 members of the **International Post Corporation (IPC)**. The IPC is a cooperative association of posts in North America, Europe and Asia Pacific.

- Since 1989, the IPC has created solutions and services that are used by more than 180 posts worldwide and is the leading service provider of the global postal industry. Collectively, IPC members deliver 80-percent of global mail volumes — more than 330 billion mail pieces each year.
- More information can be found at *ipc.be* (<http://www.ipc.be/>).

## UNIVERSAL Postal Union

Fact #709 | Updated: April 16, 2024

The Postal Service is a member of the Universal Postal Union (UPU), a United Nations' organization.

The Postal Service is a member of the **Universal Postal Union (UPU)**, a United Nations' organization.

- Established in 1874, the UPU, is the second-oldest international organization worldwide. It is headquartered in Bern, Switzerland.
- With its 192 member countries, the UPU is the primary forum for cooperation between posts. The UPU helps to ensure a truly universal network of products and services.
- More information can be found at *int*.

**6  
MILLION**  
pounds of mail  
fly each day

Fact #708 | Updated: April 16, 2024

The Postal Service uses 140 domestic airports to fly six million pounds of mail each day.

**\$1.6  
BILLION**  
International  
Mail revenue

Fact #707 | Updated: April 16, 2024

International Mail is a \$1.6 billion business for the Postal Service.

- Most of the International Mail revenue is generated from outbound services that allow customers in the United States to send mail and packages abroad.
- The Postal Service sends **5 million pounds** of international, military, and diplomatic mail and packages weekly, using 80 international airlines, composed of 11 U.S. flag carriers and 14 foreign flag carriers, and their affiliates.
- Click-N-Ship allows customers to print shipping labels with postage for Global Express Guaranteed, Priority Mail International, Priority Mail Express International and First-Class Package International Service. For more information, go to *com/ship/* (<http://www.usps.com/ship/>).

**KNOWN  
GLOBALLY**

Fact #706 | Updated: April 16, 2024

The Postal Service works closely with posts around the world to improve service and increase its annual share of the international shipping market.

- International Mail is a **\$1.6 billion** business within the Postal Service.
- Most of the International Mail revenue is generated from outbound services that allow customers in the United States

to send mail and packages abroad.

- The Postal Service sends **5 million pounds** of international, military, and diplomatic mail and packages weekly, using 80 international airlines, composed of 11 U.S. flag carriers and 14 foreign flag carriers, and their affiliates.
- Click-N-Ship allows customers to print shipping labels with postage for Global Express Guaranteed, Priority Mail International, Priority Mail Express International and First-Class Package International Service. For more information, go to *com/ship/* (<http://www.usps.com/ship/>).

## POST OFFICE in a shipping container

*Fact #666 | Updated: April 17, 2024*

The Power, MT (59468) Post Office, built in 2019, is the first Post Office built using a shipping container.

## UNSTAFFED 24/7 Post Office

*Fact #640 | Updated: April 17, 2024*

One of a kind. There is a 24-hour, unstaffed, self-service Post Office in Northern Virginia that allows customers to conduct most shipping and mailing transactions quickly and easily themselves. The self-service Post Office provides round-the-clock accessibility to PO Boxes, as well as self-service kiosks and an automated package drop.

In 2023, nearly 8,000 customers used this convenient office.

## \$114 MILLION in short-paid revenue

*Fact #540 | Updated: April 17, 2024*

The Automated Package Verification (APV) program automates the detection and collection of postage due for mail pieces with insufficient postage using automated package processing equipment. The APV program collected \$114.2 million in short-paid revenue in 2023.

## TOP 5 usps.com pages

*Fact #514 | Updated: April 17, 2024*

The top five pages, on *usps.com* in 2023, in order of popularity, were USPS Tracking, Informed Delivery, The Postal Store, COVID-19 tests and Post Office Locator.

**Top five pages** on *com*, in order of popularity, in 2023:

1. **USPS Tracking — 944 million users**
2. **Informed Delivery — 110 million users**
3. **The Postal Store — 40 million users**
4. **COVID-19 tests — 32 million users**
5. **Post Office Locator — 31 million users**

## SUNDAY package delivery

*Fact #402 | Updated: April 17, 2024*

Our Sunday best. The Postal Service continues to expand Sunday package delivery to meet the shipping needs of customers shopping online.

## PRIORITY YOU!

*Fact #400 | Updated: April 17, 2024*

Priority: YOU! The Postal Service priority is and always will be serving you. With free shipping supplies, flat-rate options, \$50 worth of free insurance, improved tracking and easy online tools, Priority Mail offers you one of the best values in the shipping business.

Here's more you should know:

Priority Mail Express offers you overnight delivery to many U.S. locations with up to \$100 of insurance coverage included with most shipments.

With Priority Mail Flat Rate boxes and envelopes, there's no need to weigh or calculate postage of packages up to 70 pounds.

Priority Mail and Priority Mail Express boxes, envelopes and labels, as well as customs pouches for international mailing products are available at no charge. They can be ordered at *usps.com* and delivered to your door or picked up at a local Post Office.

Priority Mail is the environmental choice — boxes are recyclable!

**28.6**  
**MILLION**  
Click-N-Ship  
labels

*Fact #397 | Updated: April 17, 2024*

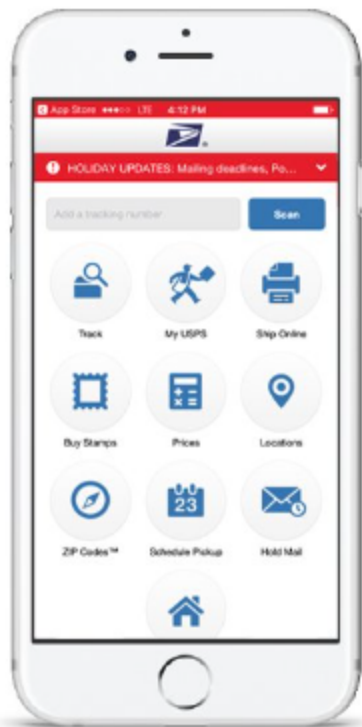
Click-N-Ship allows customers to print shipping labels with postage for Priority Mail, Priority Mail Express, Global Express Guaranteed, Priority Mail International, Priority Mail Express International and First-Class Package International Service. Click-N-Ship customers created more than 28.6 million labels, which generated nearly \$400 million in sales in 2023.

**3.1**  
**BILLION**  
visits to USPS  
mobile site

*Fact #380 | Updated: April 17, 2024*

The USPS Mobile app was downloaded more than 5.9 million times from the Apple App and Google Play stores. In 2023, there were more than 3.1 billion visits to *usps.com* from a mobile device.

**The Post Office on your phone.** The Postal Service app — **USPS Mobile** — is available on Apple and Android platforms. Some of the most popular functions currently available on *usps.com* — USPS Tracking, Informed Delivery, Post Office Locator, ZIP Code Lookup, The Postal Store, calculating postage, holding mail, requesting Package Pickup and ordering shipping supplies — are now available on most smartphones.



**6  
MILLION**  
USPS mobile  
app downloads

*Fact #377 | Updated: April 19, 2024*

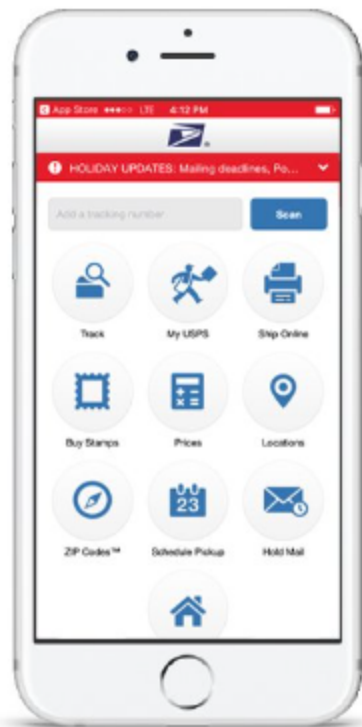
There's a Post Office on your phone. In 2023, the Postal Service app -- USPS Mobile -- was downloaded nearly 6 million times from the Apple App Store and Google Play Store.

The free usps.com iPhone app was launched in 2009.

Some of the most popular functions currently available on usps.com — Informed Delivery (<https://facts.usps.com/innovation/#fact203>), USPS Tracking, Post Office Locator, ZIP Code Lookup, calculating postage, holding mail, requesting Package Pickup and ordering shipping supplies — are now available on most smart phones.

In 2023, there were more than 3.1 billion visits to usps.com from a mobile device.





**48,000**  
point-of-sale  
terminals

*Fact #365 | Updated: April 19, 2024*

**\$268**  
**MILLION**  
in SSK revenue

*Fact #364 | Updated: April 19, 2024*

**8.6**  
**MILLION**  
passport  
applications

*Fact #346 | Updated: April 19, 2024*

**1,400**  
historic  
buildings

*Fact #345 | Updated: April 19, 2024*

Retail Systems Software (RSS point-of-sale software) is used to serve customers with their mailing and shipping needs at 20,459 locations. RSS is currently installed on 48,223 window service, military, business partner and self-service kiosk systems.

In 2023, the Postal Service received \$267.9 million in revenue from 2,788 postal self-service kiosks (SSK).

The Postal Service accepted 8.6 million passport applications in 2023.

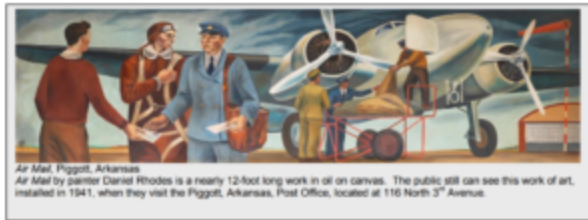
Postal Service revenue from passport applications in 2023 was \$387.2 million.

More than 1,400 postal-owned buildings are listed on the National Register of Historic Places.

### **Our History is the History of America**

They are treasures. But they're not hidden. Many of our buildings are historical properties. Inside -and outside – many of our Post Offices, you'll find impressive works of art that reflect the stories of our people and our nation.

- More than 1,400 postal-owned buildings are listed on the National Register of Historic Places. More information can be found at [gov/nr/research/](http://www.nps.gov/nr/research/) (<http://www.nps.gov/nr/research/>)
- More than 1,400 murals and/or sculptures from President Roosevelt's New Deal Programs are in our Post Offices around the nation.
- Five murals were featured on First-Class postage stamps in 2019
- *The United States Postal Service: An American History* is an entire publication dedicated to our history and can be found at [usps.com/who-we-are/postal-history/welcome.htm](https://usps.com/who-we-are/postal-history/welcome.htm).



## RANKED 52ND if a private sector company

Fact #344 | Updated: April 19, 2024

If it were a private sector company, the Postal Service would rank 52nd in the 2023 Fortune 500. In the 2023 Global Fortune 500 list, the Postal Service ranked 159th.

## MAILERS providing technical advice

Fact #323 | Updated: April 19, 2024

Postmaster General's Mailers Technical Advisory Committee (MTAC). Representing select mailing associations, this group works to enhance the value of mail by providing technical advice and recommendations to the Postal Service. More information can be found at [postalpro.usps.com/mtac](https://postalpro.usps.com/mtac).

## NPF annual industry conference

Fact #322 | Updated: April 19, 2024

National Postal Forum (NPF). The annual mailing industry conference provides educational and networking opportunities for thousands of business customers. Attendees learn about the latest mail trends and innovations through more than 100 workshops and seminars. More information can be found at [npf.org](https://npf.org).

More information can be found at [npf.org](https://npf.org).



## MILITARY Care Kit

Fact #318 | Updated: April 22, 2024

The Postal Service is the best way to ship directly to APO, FPO and DPO locations. The Military Care Kit contains six Priority Mail Flat Rate boxes — two large-sized and four medium-sized — six address labels, one roll of tape and six customs forms, and can be ordered at no charge at [usps.com/shop](https://usps.com/shop) or by calling 800-610-8734.

The Military Care Kit — and the special pricing offered for APO, FPO and DPO destinations — makes it easy to send care packages to loved ones stationed overseas.

usps.com/shop (<http://usps.com/shop>)



## BRANDED mailpieces

Fact #294 | Updated: April 22, 2024

With Picture Permit Indicia, commercial mailers can modify the permit imprint indicia on First-Class Mail and USPS Marketing Mail with a corporate logo, brand image or trademark to raise brand awareness and market products and services.

## EDDM more than \$5B in revenue

Fact #291 | Updated: April 22, 2024

Every Door Direct Mail (EDDM). This online service began in 2011 and is designed to help business mailers direct their Marketing Mail pieces to customers in a select neighborhood, city or ZIP Code. Since 2011, more than 33 billion pieces of EDDM have been sent, resulting in \$5 billion in revenue. Nearly 3 billion pieces were sent in 2023, equating to \$700 million in revenue.



The USPS Printer Directory provides customers free access to local print, design and mail preparation services for Every Door Direct Mail and other direct mail products through a searchable database and mapping program. More than 700 listings populate the directory that serves small and medium-size businesses nationwide.

## 33,904 total retail offices

Fact #223 | Updated: April 23, 2024

The Postal Service has 33,904 retail offices across the United States. This number includes contract locations. The Postal Service has 31,123 postal-managed retail offices.

## 31,123 Post Offices

Fact #226 | Updated: April 23, 2024

There are 31,123 Postal Service-managed retail offices in the United States. Including contract offices, there are 33,904 offices.

## 665.3 M customer visits

Fact #221 | Updated: April 23, 2024

The Postal Service had 665.3 million customer visits in 2023.

## 60 MILLION Informed Delivery Customers

Fact #203 | Updated: April 22, 2024

With Informed Delivery service, you can digitally preview your incoming mail and manage your packages from a computer, tablet or mobile device. More than 60 million customers have enrolled since it was launched in 2017.

Informed Delivery provides eligible residential customers with a digital preview of their household's incoming mail scheduled to arrive soon. Users can view greyscale images of the exterior, address side of incoming letter-sized mail pieces (not the inside contents) via email or an online dashboard.

Informed Delivery also allows customers to track packages delivered by the Postal Service and see when they will be delivered.

For more information and to sign up, go to [usps.com/informedelivery](https://usps.com/informedelivery) (<http://usps.com/informedelivery>).



## LARGEST retail space

Fact #139 | Updated: April 22, 2024

The largest U.S. Postal Service retail space is the James A. Farley Post Office in New York, NY (10001), at 33,100 square feet.

## WE ARE a retail giant

Fact #98 | Updated: April 22, 2024

We're a retail giant. The Postal Service has the nation's largest retail network (33,904) — larger than Subway (20,603), Dollar General (19,572), Starbucks (16,370) and McDonald's (13,541).

## POSTAL money orders

Fact #81 | Updated: April 22, 2024

In 2023, the Postal Service issued 63.3 million money orders, which equates to roughly more than 209,000 money orders each day.

During 2022, the Postal Service issued 66.4 million money orders.

## \$1.1 MILLION online sales

Fact #78 | Updated: April 22, 2024

In 2023, stamp and retail sales at The Postal Store, the official online Post Office, totaled nearly \$403 million.

**9.9**  
million visits  
*Fact #73 | Updated: April 22, 2024*

usps.com is one of the most frequently visited government sites with 1.3 billion visits in 2023 — averaging more than 7.3 million visitors each day.

**FREE**  
package pickup  
*Fact #34 | Updated: April 22, 2024*

With Package Pickup, you can go online to request Priority Mail Express and Priority Mail packages be picked up at your home or offices as part of your mail carrier's regular route — for free.

**1.3**  
**BILLION**  
usps.com visits  
*Fact #28 | Updated: April 22, 2024*

In 2023, usps.com recorded 1.3 billion visits -- averaging more than 7 million visitors each day. It's one of the most frequently visited government sites.

**\$412**  
**MILLION**  
online sales  
*Fact #29 | Updated: April 22, 2024*

In 2023, stamp and retail sales at The Postal Store, the official online Post Office, totaled nearly \$403 million.



# One Day in the Postal Service

## Just One Day in the Life of the U.S. Postal Service . . . by the Numbers

Each day the Postal Service picks up, processes, and delivers millions of letters and packages. No single operation in the world comes close to this level of connectivity for so many households and businesses.

**7**  
**MILLION**  
people visit  
usps.com daily

*Fact #1053 | Updated: April 15, 2024*

On average, 7 million people visit usps.com each day.

**93,709**  
address  
changes daily

*Fact #1052 | Updated: April 15, 2024*

On average, the Postal Service processes more than 93,000 address changes each day.

**6,600**  
USPS Fleet of  
Feet

*Fact #1051 | Updated: April 15, 2024*

There are 6,600 carriers who deliver mail entirely on foot. These carriers are our Fleet of Feet.

**23.5**  
**MILLION**  
packages  
processed daily

*Fact #1050 | Updated: April 15, 2024*

On average, the Postal Service processes and delivers 23.5 million packages each day.

**3,684**  
mail pieces per  
second

*Fact #1049 | Updated: April 15, 2024*

On average, the Postal Service processes 3,684 pieces of mail each second.

**221,000**  
mail pieces per  
minute

*Fact #1048 | Updated: April 15, 2024*

The Postal Service processes an average of 221,000 pieces of mail each minute.

**318**  
**MILLION**  
mail pieces  
processed daily

*Fact #844 | Updated: April 15, 2024*

The Postal Service processed and delivered an average of 318 million mail pieces daily in 2023.

**JUST 1**  
**DAY**  
in the Postal  
Service

*Fact #840 | Updated: April 15, 2024*

Each day the Postal Service picks up, processes and delivers millions of letters and packages. No single operation in the world comes close to this level of connectivity for so many households and businesses.

Here's just **ONE** day in the life of the Postal Service. (Figures are averages.)

- 258.9 M** — revenue received, in dollars.
- 5.8 M** — dollars paid to postal employees in salaries and benefits.
- 318 M** — average number of mail pieces processed and delivered daily.
- 13.3 M** — average number of mail pieces processed each hour.
- 221,080** — average number of mail pieces processed each minute.
- 3,684** — average number of mail pieces processed each second.
- 152.3 M** — pieces of First-Class Mail processed and delivered.
- 23.5 M** — packages processed and delivered.
- 6,600** — number of letter carriers who deliver mail entirely on foot — *The USPS Fleet of Feet*.
- 93,709** — number of address changes processed.
- 5,629** — number of addresses added to our delivery network.
- 7 M** — number of people who visit *usps.com*.
- 1.1 M** — dollars spent at The Postal Store at *usps.com*.
- 209,602** — number of money orders issued.

**6  
MILLION**  
pounds of mail  
fly each day  
*Fact #708 | Updated: April 16, 2024*

The Postal Service uses 140 domestic airports to fly six million pounds of mail each day.

**5,629**  
addresses  
added daily  
*Fact #524 | Updated: April 17, 2024*

The Postal Service added an average of 5,629 addresses to its delivery network every day in 2023.

**152 M  
PIECES**  
of mail  
processed daily  
*Fact #523 | Updated: April 17, 2024*

On average, the Postal Service processes and delivers 152.3 million pieces of First-Class Mail each day.

**13.3  
MILLION**  
pieces  
processed each  
hour  
*Fact #522 | Updated: April 17, 2024*

On average, the Postal Service processes 318 million mail pieces each day, 13.3 million each hour, 221,000 each minute and 3,684 each second.

- 383.3 M** — number of mail pieces processed and delivered each day.
- 16 M** — average number of mail pieces processed each hour.
- 226,000** — average number of mail pieces processed each minute.
- 4,437** — average number of mail pieces processed each second.

**\$5.8**  
**MILLION**  
per day

*Fact #69 | Updated: April 22, 2024*

In 2023, the Postal Service paid \$2.03 billion in salaries and benefits every two-week pay period. On average, the Postal Service pays \$5.8 million in salaries and benefits daily.

**\$258.9**  
million in  
revenue daily

*Fact #47 | Updated: April 22, 2024*

The Postal Service receives, on average, \$258.9 million in revenue each day.

# Serving communities.

The Postal Service is part of the fabric of the nation with employees making a difference in every community across the country. Here's a look at some of the programs and causes our organization supports.

FAMOUS POSTAL EMPLOYEES – PDF ([HTTPS://FACTS.USPS.COM/WP-CONTENT/UPLOADS/POSTAL-FACTS\\_INFOGRAPHICS\\_FAMOUS.PDF](https://facts.usps.com/wp-content/uploads/Postal-Facts_InfoGraphics_Famous.pdf))

## POSTAL Vehicle Service Operations

*Fact #1107 | Updated: April 15, 2024*

Postal Vehicle Service (PVS) operations includes more than 10,000 uniformed motor vehicle and tractor trailer operators. The PVS fleet includes 2,202 cargo vans, 1,880 tractors and nearly 3,200 trailers. Commuting within a 170-mile radius of their facility, PVS drivers travel more than 167 million miles each year.

## SERVING Those Who Serve

*Fact #1106 | Updated: April 15, 2024*

It's not just any letter or package. It's a picture of the kids. It's a handmade scarf. It's a favorite candy bar. It's a piece of home. The Postal Service helps make sure these very special letters and packages make it to those who serve in the military — and their families with them — wherever they are around the globe. It's our honor to serve those who serve!

## POSTAL Proud!

*Fact #662 | Updated: April 15, 2024*

We are Postal Proud! The Postal Proud program provides individuals at every level of the organization with an opportunity to share why they are proud to be a postal employee.

Thousands of employees in nearly 400 unique jobs have been recognized since its inception in 2018. #PostalProud



## FAMOUS postal employees

*Fact #869 | Updated: April 15, 2024*

Heads of industry. Hollywood legends. Sports heroes. Singers. Painters. Writers. And a couple presidents. All were postal employees before they became household names! Thirteen have even been featured on stamps.

## FAMOUS POSTAL EMPLOYEES

Most people know that Benjamin Franklin worked for the Postal Service, but did you know that Bing Crosby and Walt Disney did, too? What about Steve Carell or Charles Lindbergh? John Prine or Brittany Howard?

Thirteen of these former employees have also been commemorated on U.S. postage stamps and are marked by an asterisk.

▪ John Brown	Abolitionist	Postmaster, Randolph, PA – 1828-1835
▪ Steve Carell	Actor, comedian	Rural letter carrier, Littleton, MA – 1985
▪ Bing Crosby*	Singer, actor	Substitute and regular clerk, Spokane, WA – 1921
▪ Walt Disney*	Film producer	Substitute carrier, Chicago – 1918
▪ William Faulkner*	Novelist	Postmaster, University, MS – 1921-1924
▪ Benjamin Franklin*	Statesmen, inventor	Postmaster general, 1775-1776
▪ Ace Frehley	Guitarist for Kiss	Substitute letter carrier, New York City – ca. 1970
▪ Sherman Hemsley	Actor	Clerk, Philadelphia and New York City – 1960s
▪ Conrad Hilton	Hotel magnate	Postmaster, San Antonio, NM – 1910-1911
▪ Harry Hooper	Baseball Hall-of-Famer	Postmaster, Capitola, CA – 1933-1957
▪ Brittany Howard	Singer, Alabama Shakes	Rural carrier assistant, Athens, AL – 2011
▪ Rock Hudson	Actor	Substitute letter carrier, Winnetka, IL – ca. 1947
▪ Ellsworth Kelly*	Artist	Clerk, New York City – 1954-1955
▪ Sidney Lanier*	Poet	Clerk, Macon, GA – ca. 1858
▪ Abraham Lincoln*	U.S. president	Postmaster, New Salem, IL – 1833-1836
▪ Charles Lindbergh*	Aviator	Airmail pilot – 1926-1927
▪ Fred C. Lindstrom	Baseball Hall-of-Famer	Postmaster, Evanston, IL – 1961-1972
▪ Charles Mingus	Jazz musician	Letter carrier, Los Angeles, 1949, and clerk, New York City, 1952
▪ Samuel F. B. Morse	Inventor	Superintendent, Telegraph Unit – 1845-1846
▪ John Prine	Singer, songwriter	Letter carrier, Maywood, IL – 1964-1969
▪ Knute Rockne*	Football coach	Substitute and regular clerk, Chicago – 1907-1910
▪ Adlai E. Stevenson	U.S. vice president	First assistant postmaster general – 1885-1889
▪ Harry S. Truman*	U.S. president	Postmaster, Grandview, MO – 1914-1915
▪ John Wanamaker	Retail magnate	Postmaster general – 1889-1893
▪ Noah Webster*	Lexicographer	Special agent – 1793
▪ Hal Williams	Actor	Clerk, Los Angeles – 1968-70s
▪ Richard Wright*	Author	Substitute clerk, Chicago – 1929-1932
▪ N.C. Wyeth*	Painter	Mail carrier, Fort Defiance, AZ, to Crozier, NM – 1904

## SINGING mailman

Fact #746 | Updated: April 15, 2024

John Prine, singer and songwriter, was a letter carrier in Maywood, IL, 1964-1969.



## FAMOUS POSTAL EMPLOYEES

Most people know that Benjamin Franklin worked for the Postal Service, but did you know that Bing Crosby and Walt Disney did, too? What about Steve Carell or Charles Lindbergh? John Prine or Brittany Howard?

Twelve of these former employees have also been commemorated on U.S. postage stamps and are marked by an asterisk.

▪ John Brown	Abolitionist	Postmaster, Randolph, PA – 1828-1835
▪ Steve Carell	Actor, comedian	Rural letter carrier, Littleton, MA – 1985
▪ Bing Crosby*	Singer, actor	Substitute and regular clerk, Spokane, WA – 1921
▪ Walt Disney*	Film producer	Substitute carrier, Chicago – 1918
▪ William Faulkner*	Novelist	Postmaster, University, MS – 1921-1924
▪ Benjamin Franklin*	Statesmen, inventor	Postmaster general, 1775-1776
▪ Sherman Hemsley	Actor	Clerk, Philadelphia and New York City – 1960s
▪ Conrad Hilton	Hotel magnate	Postmaster, San Antonio, NM – 1910-1911
▪ Harry Hooper	Baseball Hall-of-Famer	Postmaster, Capitola, CA – 1933-1957
▪ Brittany Howard	Singer, Alabama Shakes	Rural carrier assistant, Athens, AL – 2011
▪ Rock Hudson	Actor	Substitute letter carrier, Winnetka, IL – ca. 1947
▪ Sidney Lanier*	Poet	Clerk, Macon, GA – ca. 1858
▪ Abraham Lincoln*	U.S. president	Postmaster, New Salem, IL – 1833-1836
▪ Charles Lindbergh*	Aviator	Airmail pilot – 1926–1927
▪ Fred C. Lindstrom	Baseball Hall-of-Famer	Postmaster, Evanston, IL – 1961-1972
▪ Charles Mingus	Jazz musician	Letter carrier, Los Angeles, 1949, and clerk, New York City, 1952
▪ Samuel F. B. Morse	Inventor	Superintendent, Telegraph Unit – 1845-1846
▪ John Prine	Singer, songwriter	Letter carrier, Maywood, IL – 1964-1969
▪ Knute Rockne*	Football coach	Substitute and regular clerk, Chicago – 1907-1910
▪ Adlai E. Stevenson	U.S. vice president	First assistant postmaster general – 1885-1889
▪ Harry S. Truman*	U.S. president	Postmaster, Grandview, MO – 1914-1915
▪ John Wanamaker	Retail magnate	Postmaster general – 1889-1893
▪ Noah Webster*	Lexicographer	Special agent – 1793
▪ Hal Williams	Actor	Clerk, Los Angeles – 1968-70s
▪ Richard Wright*	Author	Substitute clerk, Chicago – 1929-1932
▪ N.C. Wyeth*	Painter	Mail carrier, Fort Defiance, AZ, to Crozier, NM – 1904

## DAILY NEWS LINK

*Fact #803 | Updated: April 15, 2024*

Link, a daily news site for Postal Service employees, is available on any computer with internet access. The content is produced by a team of writers and editors based at USPS headquarters in Washington, DC. Additional contributions come from postal employees across the nation. The site is updated with new articles, photos, graphics and videos each weekday.

# LINK

Regular features include “Heroes’ Corner,” a column about employees who perform heroic deeds, and “On the Move,” a weekly roundup of employees who’ve received new appointments or recognition.

Employees with postal email addresses receive a Link email each weekday with links to the most recent stories. The team also produces an end-of-week Link Recap email with stories readers might have missed, along with Link Extra emails for breaking news.

Link mobile is a mobile-friendly version of the Link site. Link mobile has all the news you’ll find on the desktop version of Link, except it’s formatted for easy reading on handheld smart devices. Employees and

others can receive a weekly Link mobile email by subscribing at  
www.usps.link ([https://gcc02.safelinks.protection.outlook.com/?  
url=http%3A%2F%2Fwww.usps.link%2F&data=04%7C01%7Csue.brennan%](https://gcc02.safelinks.protection.outlook.com/?url=http%3A%2F%2Fwww.usps.link%2F&data=04%7C01%7Csue.brennan%2F)

# POSTAL

## diversity

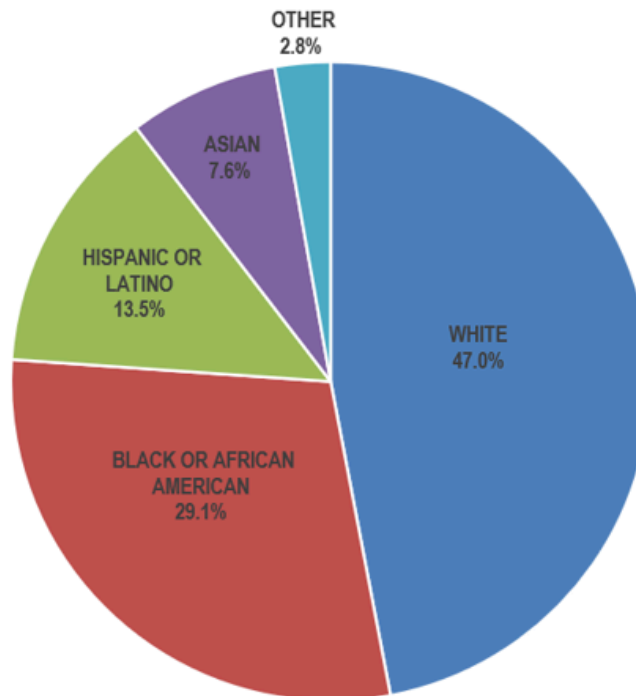
*Fact #705 | Updated: April 16, 2024*

The Postal Service workforce is one of the most diverse in the nation. We look like America. That is our strength.

The Postal Service is one of the most diverse organizations in the nation.

- Women make up 45 percent of our workforce.
- Historically underrepresented racial groups make up 53 percent of our workforce.
- Nearly 73,000 veterans are employed by the Postal Service.
- There are more than 39,000 employees with disabilities, of which nearly 29,000 are disabled veterans.
- We maintain a year-round focus on diversity and disability outreach.

## U.S. POSTAL SERVICE RACIAL / ETHNICITY COMPOSITION



AS OF SEP. 30, 2023

FIRST  
female PMG

*Fact #704 | Updated: April 16, 2024*

The first female Postmaster General was Megan J. Brennan, Washington, DC, 2015.



## FIRST African American on stamp

*Fact #702 | Updated: April 16, 2024*

| The first African American on a stamp was Booker T. Washington, 1940.



## FIRST Native American on a stamp

*Fact #700 | Updated: April 16, 2024*

| The first Native American on a stamp was Pocahontas, 1907.



**FIRST**  
Hispanic  
American on a  
stamp

*Fact #699 | Updated: April 16, 2024*

The first Hispanic American on a stamp was Adm. David Farragut, 1903.



**FIRST**  
African  
American  
Inspector

*Fact #697 | Updated: April 17, 2024*

The first known African American postal inspector was Isaac Myers, Baltimore, MD, 1870.





Isaac Myers served from 1870 until 1879. During his employment he helped solve a number of notorious cases.

## 1ST AMERICAN woman on a stamp

*Fact #696 | Updated: April 17, 2024*

The first American woman on a U.S. postage stamp was Martha Washington, 1902.

## FIRST African American Carrier

*Fact #695 | Updated: April 17, 2024*

The first known African American mail carrier was James B. Christian, Richmond, VA, 1869.

## FIRST KNOWN African American Postmaster

*Fact #692 | Updated: April 17, 2024*

The first known African American Postmaster was James W. Mason, Sunny Side, AR, 1867.

## FIRST KNOWN female mail carrier

*Fact #689 | Updated: April 17, 2024*

The first known female mail carrier was Sarah Black, mail messenger, Charlestown, MD, 1845.

## FIRST FEMALE postmaster

*Fact #688 | Updated: April 17, 2024*

The first known female Postmaster in the United Colonies was Mary Katherine Goddard, Baltimore, MD, 1775.

## 1860 African American Postmasters

*Fact #686 | Updated: April 17, 2024*

African Americans worked as Postmasters, clerks and carriers beginning in the 1860s — 100 years before the Civil Rights era brought wider opportunity in the American workplace.

## WOMEN postmasters

*Fact #685 | Updated: April 17, 2024*

Women served as Postmasters in this country more than a century before they won the right to vote.

## 73,000 Veterans

*Fact #660 | Updated: April 17, 2024*

We're patriotic. The Postal Service employs nearly 73,000 military veterans, making it one of the largest employers of veterans in the country.



The Postal Service has also issued more than 140 stamps honoring the nation's military history, including the Service Cross Medals stamps.

## EMPOWERED workforce

Fact #652 | Updated: April 17, 2024

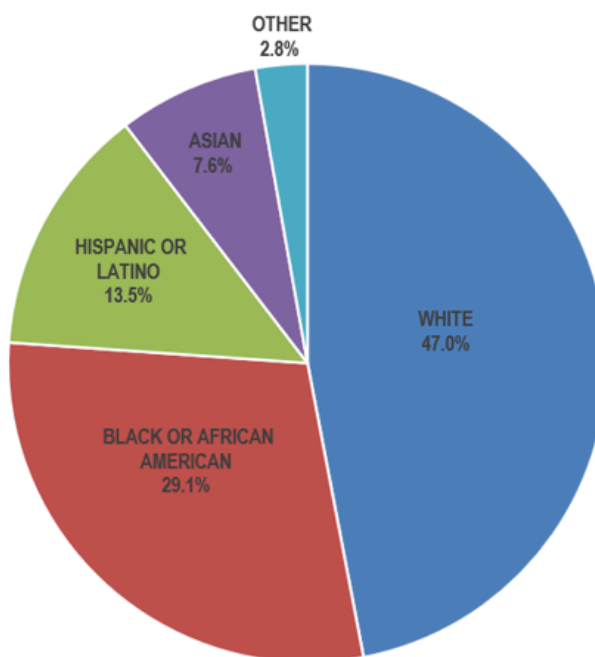
The Postal Service encourages employees to take advantage of self-paced career development by offering 24,000 online courses and 28 educational partnerships offering discounts towards degree and certification programs.

## WE'RE DIVERSE

Fact #580 | Updated: April 17, 2024

The Postal Service is diverse. The strength of the Postal Service lies in its amazing diversity. Historically underrepresented racial groups account for 53 percent of the workforce.

### U.S. POSTAL SERVICE RACIAL / ETHNICITY COMPOSITION



AS OF SEP. 30, 2023

## WE'RE socially responsible

Fact #563 | Updated: April 17, 2024

We're socially responsible. The Postal Service supports communities nationwide. These efforts include facilitating the nation's largest one-day food drive, working with customers to prevent dog bites, educating customers on consumer protection, and delivering holiday magic through USPS Operation Santa.

## \$2 BILLION every 2 weeks

Fact #363 | Updated: April 19, 2024

In 2023, the Postal Service paid \$2.03 billion every two weeks in salaries and benefits.

## 75TH Postmaster General

Fact #348 | Updated: April 19, 2024

Louis DeJoy is the 75th Postmaster General of the United States.



## JUDICIOUS

resolving  
disputes

*Fact #340 | Updated: April 19, 2024*

The Postal Service's Judicial Officer Department is a court system that conducts hearings and neutrally resolves a wide variety of disputes involving postal matters. Its independent decisions involve contract disputes, employee debt disputes, mail disputes and mail fraud, among many other areas.

## CONNECTING

USPS and  
mailers

*Fact #324 | Updated: April 19, 2024*

Postal Customer Councils (PCCs). These Postal Service-affiliated networks connect business mailers with local Post Office leadership to develop more effective and profitable mailings through training and information sharing. Since the 1960s, PCCs have been the go-to local resource for helping mailers learn, innovate and build their business. More information can be found at [postalpro.usps.com/pcc](https://postalpro.usps.com/pcc).

Find more information at [postalpro.usps.com/pcc](https://postalpro.usps.com/pcc)  
(<http://postalpro.usps.com/pcc>).

## MAILERS

providing  
technical advice

*Fact #323 | Updated: April 19, 2024*

Postmaster General's Mailers Technical Advisory Committee (MTAC). Representing select mailing associations, this group works to enhance the value of mail by providing technical advice and recommendations to the Postal Service. More information can be found at [postalpro.usps.com/mtac](https://postalpro.usps.com/mtac).

## ABOUT

that motto

*Fact #321 | Updated: April 19, 2024*

The U.S. Postal Service has no official motto. Nope, it's not this: "Neither snow nor rain nor heat nor gloom of night stays these couriers from the swift completion of their appointed rounds." But we certainly appreciate the sentiment.

**About that motto...**

Those words are engraved on the front of the James A. Farley Post Office in NYC, set in stone by the architectural firm that built it. The phrase is taken from an ancient book by the Greek historian Herodotus and refers to messengers in the Persian Empire.

The phrase comes from book 8, paragraph 98, of *The Persian Wars* by Herodotus, a Greek historian. During the wars between the Greeks and Persians (500-449 B.C.), the Persians operated a system of mounted postal couriers who served with great fidelity.

The popular belief that Herodotus's description of the Persian postal service is about the U.S. Postal Service is a tribute to the hundreds of thousands of men and women who have delivered the mail reliably and dependably, through all conditions, for centuries.



## FIRST Postmaster General

*Fact #320 | Updated: April 19, 2024*

## 1980 MPSA formed

*Fact #319 | Updated: April 22, 2024*

The Post Office Department was founded in 1775 with Benjamin Franklin as the first Postmaster General. His annual salary was \$1,000. Before 1971, the PMG was a Cabinet member.

The Military Postal Service Agency was formed in 1980, consolidating the postal operations of the Army, Air Force, Navy and Marine Corps. The Department of Defense designated the Secretary of the Army as the single military mail manager.

### Military and Diplomatic Mail in brief.

- The Military Postal Service (MPS) was formed in 1980, consolidating the postal operations of the Army, Air Force, Navy and Marine Corps. The Department of Defense designated the secretary of the Army as the single military mail manager.
- The MPS provides service in **56**
- The MPS operates **1,624** military postal operations comprised of **386** land- and sea-based military Post Offices, **328** land- and sea-based unit mailrooms, **291** mobile units, **591** official mail centers and **28** mail processing facilities worldwide.
- The U.S. Department of State Diplomatic Post Office serves 32,500 customers at 184 diplomatic missions across 103 countries around the world.
- Within the military and diplomatic services, **1,170** ZIP Codes are served around the world.
- Members of the military and diplomatic corps receive virtually the same level of service as they would if they were at home in the

United States. Differences are based on the country where they're stationed, and the types of missions involved.

- Military and diplomatic mail moves within the United States via the Postal Service transportation network to major mail processing facilities.
- The MPS oversees **3,300** commercial air transportation lanes, movement of **135 million** pounds of mail, at an annual cost of **\$165 million**.
- USPS Ground Advantage, Priority Mail or Priority Mail Express packages move from major airport gateways in the United States to overseas airport gateways on commercial aircraft. It then moves by various methods to designated military or diplomatic postal facilities for delivery to individual members. Mail also moves by military aircraft when necessary.
- The MPS contributes more than **\$65 million** in Postal Service revenue annually.

## MILITARY Care Kit

*Fact #318 | Updated: April 22, 2024*

The Postal Service is the best way to ship directly to APO, FPO and DPO locations. The Military Care Kit contains six Priority Mail Flat Rate boxes — two large-sized and four medium-sized — six address labels, one roll of tape and six customs forms, and can be ordered at no charge at [usps.com/shop](https://usps.com/shop) or by calling 800-610-8734.

The Military Care Kit — and the special pricing offered for APO, FPO and DPO destinations — makes it easy to send care packages to loved ones stationed overseas.

[usps.com/shop](https://usps.com/shop) (<http://usps.com/shop>)



## EDUCATION for consumers

*Fact #317 | Updated: April 22, 2024*

National Consumer Protection Week. During the Federal Trade Commission's annual awareness campaign, the Postal Service and U.S. Postal Inspection Service provide customers with education, tools and information to combat identity theft and mail fraud.

More information can be found at

- NCPW 2024 – United States Postal Inspection Service ([uspis.gov](https://www.uspis.gov)) (<https://www.uspis.gov/ncpw2024#:~:text=During%20National%20Consumer%20Protection%20Week,the,wants%20the%20public%20to%20beware%20of%20identity%20theft%20and%20mail%20fraud.>)
- Celebrate National Consumer Protection Week. Talk about scams | Consumer Advice ([ftc.gov](https://consumer.ftc.gov)) (<https://consumer.ftc.gov/consumer-alerts/2024/03/celebrate-national-consumer-protection-week-talk-about-scams>)

**56**  
countries

*Fact #296 | Updated: April 22, 2024*

The Military Postal Service (MPS) provides service in 56 countries. The MPS operates 1,624 military postal operations comprised of 386 land- and sea-based military Post Offices, 328 land- and sea-based unit mailrooms, 291 mobile units, 591 official mail centers and 28 mail processing facilities worldwide.

### **Military and Diplomatic Mail in brief**

- The Military Postal Service (MPS) was formed in 1980, consolidating the postal operations of the Army, Air Force, Navy and Marine Corps. The Department of Defense designated the secretary of the Army as the single military mail manager.
- The MPS provides service in **56** countries.
- The U.S. Department of State Diplomatic Post Office serves 32,500 customers at 184 diplomatic missions across 103 countries around the world.
- Within the military and diplomatic services, **1,170** ZIP Codes are served around the world.
- Members of the military and diplomatic corps receive virtually the same level of service as they would if they were at home in the United States. Differences are based on the country where they're stationed, and the types of missions involved.
- Military and diplomatic mail moves within the United States via the Postal Service transportation network to major mail processing facilities.
- The MPS oversees **3,300** commercial air transportation lanes, movement of **135 million** pounds of mail, at an annual cost of **\$165 million**.
- USPS Ground Advantage, Priority Mail or Priority Mail Express packages move from major airport gateways in the United States to overseas airport gateways on commercial aircraft. It then moves by various methods to designated military or diplomatic postal facilities for delivery to individual members. Mail also moves by military aircraft when necessary.
- The MPS contributes more than **\$65 million** in Postal Service revenue annually.

**73,000**  
military veterans

*Fact #288 | Updated: April 22, 2024*

We're patriotic. The Postal Service employs nearly 73,000 military veterans, making it one of the largest employers of veterans in the country.

The organization has also issued more than 140 stamps honoring the nation's military history, including the Service Cross Medals stamps.

**MAIL IS**  
**BIG business**

*Fact #108 | Updated: April 22, 2024*

The U.S. Postal Service is the core of the nation's \$1.6 trillion mailing industry, which employs more than 7.3 million people.

The U.S. Postal Service is the core of the nation's **\$1.58 trillion** mailing industry, which employs more than **7.3 million** people.\*



These types of mail brought in most of the **\$78.2 billion** in postal operating revenue in 2023:

- First-Class Mail — **\$24.5 billion**
- Marketing Mail — **\$15 billion**
- Shipping and Package Services — **\$31.6 billion**
- International — **\$1.6 billion**
- Periodicals — **\$918 million**

## WE HAVE heroes among US

*Fact #97 | Updated: April 22, 2024*

We have heroes among us. Postal employees regularly go beyond the call of duty to protect the lives of the people they serve, including elderly or disabled customers through the Carrier Alert Program.

In 2023, the Postal Service recognized 128 heroic employees.

## 6,500 fleet of feet

*Fact #72 | Updated: April 22, 2024*

More than 74,000 letter carriers drive to neighborhoods and then deliver the mail on foot. More than 6,500 carriers deliver mail entirely on foot -- the USPS Fleet of Feet. Mail is also delivered by bicycle on select routes in Arizona and Florida, reducing emissions and saving fuel.

# Size and Scope

The U.S. Postal Service delivers more mail than any other post in the world, serving nearly 167 million addresses in the country — covering every state, city and town. Everyone living the United States and its territories has access to postal products and services and pays the same for a First-Class Mail postage stamp, regardless of location.

**12.6  
MILLION**  
business  
delivery points

*Fact #1056 | Updated: April 15, 2024*

| In 2023, the Postal Service delivered to 12.6 million business addresses.

**154  
MILLION**  
residential  
delivery points

*Fact #1055 | Updated: April 15, 2024*

| In 2023, the Postal Service delivered to 154 million residential addresses.

**1.7  
MILLION**  
new delivery  
points added

*Fact #1054 | Updated: April 15, 2024*

| In 2023, 1.7 million new delivery points were added in the country.

**22,873**  
leased  
properties

*Fact #664 | Updated: April 17, 2024*

| The Postal Service has 22,873 leased properties.

**8,500**  
owned  
properties

*Fact #663 | Updated: April 17, 2024*

| The Postal Service owns 8,500 properties around the country.

**\$268  
MILLION**  
in SSK revenue

*Fact #364 | Updated: April 19, 2024*

| In 2023, the Postal Service received \$267.9 million in revenue from 2,788 postal self-service kiosks (SSK).

**\$2  
BILLION**  
every 2 weeks

*Fact #363 | Updated: April 19, 2024*

| In 2023, the Postal Service paid \$2.03 billion every two weeks in salaries and benefits.

**44%**  
of the world's  
mail

*Fact #362 | Updated: April 19, 2024*

| Forty-four percent of the world's mail volume is processed and delivered by the U.S. Postal Service.

**75TH**  
Postmaster  
General

*Fact #348 | Updated: April 19, 2024*

| Louis DeJoy is the 75th Postmaster General of the United States.



**8.6  
MILLION**  
passport  
applications

*Fact #346 | Updated: April 19, 2024*

The Postal Service accepted 8.6 million passport applications in 2023.

Postal Service revenue from passport applications in 2023 was \$387.2 million.

**\$78.2 B**  
operating  
revenue

*Fact #190 | Updated: April 22, 2024*

The Postal Service had \$78.2 billion in operating revenue in 2023.

**525,469**  
career  
employees

*Fact #238 | Updated: April 24, 2024*

There were 525,469 career employees in 2023. The number of non-career employees was 115,000.

**116.2 B**  
total mail  
volume

*Fact #236 | Updated: April 22, 2024*

Total mail volume in 2023 was 116.2 billion.

**11.8  
BILLION**  
First-Class  
single piece

*Fact #234 | Updated: April 23, 2024*

In 2023, the Postal Service recorded 11.8 billion in First-Class single piece mail volume. First-Class single piece mail is mail bearing postage stamps — bill payments, personal correspondence, cards and letters, etc.

**166.6 M**  
delivery points

*Fact #227 | Updated: April 23, 2024*

The Postal Service prides itself on going the last mile to deliver the US Mail. In 2023, the Postal Service delivered mail and packages to 166.6 million delivery points nationwide.

**28.3**  
**MILLION**  
address  
changes

*Fact #225 | Updated: April 23, 2024*

In 2023, the Postal Service processed 28.3 million address changes.

**31,123**  
Post Offices

*Fact #226 | Updated: April 23, 2024*

There are 31,123 Postal Service-managed retail offices in the United States. Including contract offices, there are 33,904 offices.

**665.3 M**  
customer visits

*Fact #221 | Updated: April 23, 2024*

The Postal Service had 665.3 million customer visits in 2023.

**\$11.6 B**  
retail revenue

*Fact #219 | Updated: April 23, 2024*

In 2023, Postal Service retail revenue totaled \$11.6 billion.

**MAIL IS**  
BIG business

*Fact #108 | Updated: April 22, 2024*

The U.S. Postal Service is the core of the nation's \$1.6 trillion mailing industry, which employs more than 7.3 million people.

The U.S. Postal Service is the core of the nation's **\$1.58 trillion** mailing industry, which employs more than **7.3 million** people.\*

These types of mail brought in most of the **\$78.2 billion** in postal operating revenue in 2023:

- First-Class Mail — **\$24.5 billion**
- Marketing Mail — **\$15 billion**
- Shipping and Package Services — **\$31.6 billion**
- International — **\$1.6 billion**
- Periodicals — **\$918 million**

**246,503**  
postal vehicles

*Fact #93 | Updated: April 23, 2024*

The Postal Service has more than 246,503 vehicles, one of the largest civilian fleets in the world.

**POSTAL**  
money orders

*Fact #81 | Updated: April 22, 2024*

In 2023, the Postal Service issued 63.3 million money orders, which equates to roughly more than 209,000 money orders each day.

During 2022, the Postal Service issued 66.4 million money orders.

**1.3**  
**BILLION**  
usps.com visits

*Fact #28 | Updated: April 22, 2024*

In 2023, usps.com recorded 1.3 billion visits -- averaging more than 7 million visitors each day. It's one of the most frequently visited government sites.

**\$412**  
**MILLION**  
online sales

*Fact #29 | Updated: April 22, 2024*

In 2023, stamp and retail sales at The Postal Store, the official online Post Office, totaled nearly \$403 million.

# Postage stamps

## PEOPLE, PLACES, POSTAGE

Postage stamps are miniature works of art designed to reflect the American experience. Stamps highlight heroes, history, milestones, achievements and natural wonders. There's a story behind every stamp.

### Learn more.

The Smithsonian's National Postal Museum in Washington, DC, includes the world's largest gallery dedicated to philately. For more information, go to [postalmuseum.si.edu](http://postalmuseum.si.edu) (<http://postalmuseum.si.edu>).

## 50 STATES on Stamps

Fact #861 | Updated: April 15, 2024

All 50 states have been commemorated on postage stamps. They are each honored in 50 year increments from their inception date.



## STAMPS in caves

Fact #768 | Updated: April 16, 2024

No troglodytes here! The Stamp Fulfillment Service facility, located in Kansas City, MO, is located in a limestone cave 150 feet beneath the ground. It is the Postal Service's only facility located underground.

The consistent, year-round temperatures and humidity levels in the caves allow the stamps to be maintained in mint-quality condition. The underground facility also keeps the inventory and employees safe from



snow, flooding, winds and tornadic activity common in the Midwest.

## FIRST African American on stamp

*Fact #702 | Updated: April 16, 2024*

| The first African American on a stamp was Booker T. Washington, 1940.



## FIRST Native American on a stamp

*Fact #700 | Updated: April 16, 2024*

| The first Native American on a stamp was Pocahontas, 1907.



## FIRST Hispanic American on a stamp

Fact #699 | Updated: April 16, 2024

The first Hispanic American on a stamp was Adm. David Farragut, 1903.



## 1ST AMERICAN woman on a stamp

Fact #696 | Updated: April 17, 2024

The first American woman on a U.S. postage stamp was Martha Washington, 1902.

## 1907 first Native American stamp

Fact #623 | Updated: April 17, 2024

The first Native American featured on a U.S. postage stamp was Pocahontas in 1907.





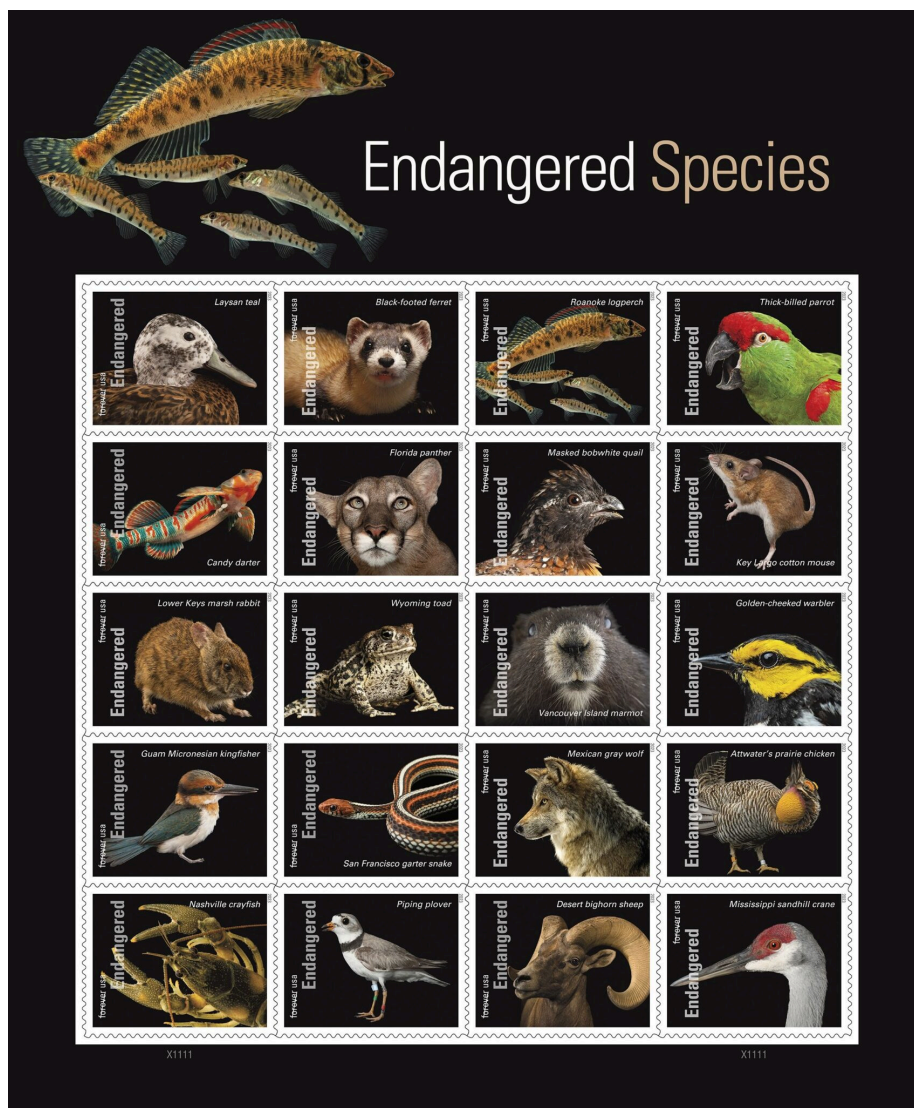
# STAMP printing technology

Fact #512 | Updated: April 17, 2024

The Postal Service releases several stamps each year that highlight innovative stamp printing technologies.

In 2023, those stamps were:

- The Lunar New Year — Year of the Rabbit stamp, part of the Celebrating Lunar New Year stamp series, had intricate gold and teal foil in the stamp artwork and selvage.
- The Endangered Species stamps showcased photographs of 20 endangered animals found within the 50 states and U.S. territories, as well as two North American species living near U.S. borders. The stamps were printed with a matte and spot gloss.
- The Thinking of You stamps featured whimsical artwork and stickers with messages of encouragement for use on envelopes.
- The \$10 Floral Geometry stamp included (<https://facts.usps.com/wp-content/uploads/USPS23STA020B.tif>) a watercolor background and silver foil-stamped designs and typography creating a sophisticated look.



## PREPAID postage stamps

Fact #378 | Updated: April 19, 2024

## 1893 first woman on stamp

Fact #337 | Updated: April 19, 2024

People once had to pay for the postage on the letters they received. That resulted in a lot of mail being returned because the recipient didn't want to spend the money. Prepaid postage stamps, introduced in 1847, solved this problem.

The first woman to appear on a U.S. postage stamp was Queen Isabella in 1893. The first American woman honored on stamp was Martha Washington in 1902.

The support of Queen Isabella was essential to Columbus's expedition. Though the subject of the 1-dollar stamp suggests that Queen Isabella sold her jewels to fund Columbus's expedition, in reality the Queen offered limited financial support. However, her decision to endorse Columbus's voyage in the name of Spain made the discovery of the "New World" possible.

The portrait of Queen Isabella on the 4-dollar stamp is the first portrait of a woman to appear on a US postage stamp.



## LICK no more

Fact #336 | Updated: April 19, 2024

## ALWAYS and forever

Fact #335 | Updated: April 19, 2024

Stick the landing! In 1992, pressure-sensitive self-adhesive stamps rolled out nationally. By 2005, 98 percent of all stamps were this type. Today, all stamps are sticky.

The Postal Service's first Forever stamp — the Liberty Bell — was issued on April 12, 2007, dedicated at Philadelphia's Independence Hall. By July of that year, 1.2 billion stamps had been sold.

Forever stamps are purchased at the current First-Class Mail postage price and remain valid for full postage no matter how prices change.



## STAMPS supporting causes

*Fact #334 | Updated: April 19, 2024*

Semipostal stamps are First-Class Mail stamps sold at a price above the cost of a regular stamp to raise funds for designated causes. The dollar amounts below represent the funds we have transferred to the causes listed.

### Supporting causes in the public interest.

Semipostal stamps are First-Class Mail stamps sold at a price above the cost of a regular stamp to raise funds for designated causes. The dollar amounts below represent the funds the Postal Service has transferred to the causes listed.

- The **Breast Cancer Research** semipostal has raised nearly **\$95 million** since 1998. More than **1 billion** Breast Cancer Research stamps have been sold.
- The **Save Vanishing Species** semipostal has raised more than **\$7.6 million** since 2011. Nearly **66 million** Save Vanishing Species stamps have been sold.
- The **Alzheimer's** semipostal has raised nearly **\$1.5 million** since 2017. More than **11 million** Alzheimer's stamps have been sold.
- The **Healing PTSD** semipostal has raised more than **\$1.9 million** since 2019. More than **17 million** Healing PTSD stamps have been sold.

**13.7  
BILLION**  
postage stamps  
printed

*Fact #333 | Updated: April 19, 2024*

In 2023, 13.68 billion U.S. postage stamps were printed, and \$3.96 billion in stamps and stamp product orders were received by mail, telephone at 1-800-STAMP-24 and online at [usps.com/stamps](https://usps.com/stamps).

Postage stamps are miniature works of art designed to reflect the American experience. Stamps highlight heroes, history, milestones, achievements, and natural wonders. There's a story behind every stamp.





## OUTER SPACE postage stamp

Fact #332 | Updated: April 19, 2024

Out of this world! A postage stamp was inside the New Horizons spacecraft that made a flyby of Pluto in July 2015. That's the farthest distance traveled by a postage stamp - more than 3 billion miles. So noted by the Guinness World Records.

The “*Pluto: Not Yet Explored*” 29-cent stamp was part of a set of solar system stamps that were issued in 1991.



## 73,000 military veterans

Fact #288 | Updated: April 22, 2024

We're patriotic. The Postal Service employs nearly 73,000 military veterans, making it one of the largest employers of veterans in the country.

The organization has also issued more than 140 stamps honoring the nation's military history, including the Service Cross Medals stamps.

## 68 CENTS

Fact #90 | Updated: April 17, 2024

For 68 cents, anyone can send a letter, regardless of geographic location, to anywhere in the United States and its territories.

## \$95 MILLION breast cancer research

Fact #32 | Updated: April 22, 2024

The Breast Cancer Research semipostal has raised \$95 million since 1998. More than 1 billion Breast Cancer Research stamps have been sold.

**Supporting causes in the public interest.**

Semipostal stamps are First-Class Mail stamps sold at a price above the cost of a regular stamp to raise funds for designated causes. The dollar amounts below represent the funds the Postal Service has transferred to the causes listed.

- The **Save Vanishing Species** semipostal has raised more than **\$7.6 million** since 2011. Nearly **66 million** Save Vanishing Species stamps have been sold.
- The **Alzheimer's** semipostal has raised nearly **\$1.5 million** since 2017. More than **11 million** Alzheimer's stamps have been sold.
- The **Healing PTSD** semipostal has raised more than **\$1.9 million** since 2019. More than **17 million** Healing PTSD stamps have been sold.

# Top Facts

## you should know about the U.S. Postal Service

### THE TOP FACTS TO KNOW ABOUT THE POSTAL SERVICE

# 18

*Fact #1172 | Updated: April 15, 2024*

We're tech-savvy. The Postal Service uses a vast network of people and advanced technologies to collect, process, transport and accurately deliver the nation's mail and packages in an increasingly digital world.

# 17

*Fact #1087 | Updated: April 15, 2024*

We're social. The Postal Service is the original social network, but that doesn't mean we aren't active on the other, newer social networks.

Facebook – [facebook.com/usps](https://www.facebook.com/usps) (<http://www.facebook.com/usps>)

Instagram – [instagram.com/uspostalservice](https://www.instagram.com/uspostalservice)  
(<http://www.instagram.com/uspostalservice>)

LinkedIn – [linkedin.com/company/usps](https://www.linkedin.com/company/usps)  
(<http://www.linkedin.com/company/usps>)

Pinterest – [pinterest.com/uspsstamps](https://www.pinterest.com/uspsstamps)  
(<http://www.pinterest.com/uspsstamps>)

Podcast – [usps-mailin-it.simplecast.com/](https://usps-mailin-it.simplecast.com/) (<https://usps-mailin-it.simplecast.com/>)

Postal Blog – [uspsblog.com](http://www.uspsblog.com/) (<http://www.uspsblog.com/>)

Threads – [threads.net/@uspostalservice](https://www.threads.net/@uspostalservice)  
(<mailto:threads.net/@uspostalservice>)

X – [x.com/usps](https://www.x.com/usps) (<http://www.x.com/usps>)

YouTube – [youtube.com/usps](https://www.youtube.com/usps) (<http://www.youtube.com/usps>)

# 16

*Fact #662 | Updated: April 15, 2024*

We are Postal Proud! The Postal Proud program provides individuals at every level of the organization with an opportunity to share why they are proud to be a postal employee.

Thousands of employees in nearly 400 unique jobs have been recognized since its inception in 2018. #PostalProud



15

*Fact #906 | Updated: April 15, 2024*

We're all heart. The Postal Service is the heart of the \$1.58 trillion United States mailing industry, which employs more than 7.3 million people.

14

*Fact #904 | Updated: April 15, 2024*

We're global. The Postal Service processes and delivers 44 percent of the world's mail and is constantly innovating to make customer experiences better.

13

*Fact #660 | Updated: April 17, 2024*

We're patriotic. The Postal Service employs nearly 73,000 military veterans, making it one of the largest employers of veterans in the country.

The Postal Service has also issued more than 140 stamps honoring the nation's military history, including the Service Cross Medals stamps.

12

*Fact #651 | Updated: April 17, 2024*

We're resilient. The Postal Service has a long and storied history of creating new technologies for the American people — enabling faster, more efficient communication and safer, more secure delivery of correspondence and merchandise.

For nearly two and a half centuries, the Postal Service has adapted to meet the evolving needs of its customers.

11

*Fact #649 | Updated: April 17, 2024*

We're customer focused. The Postal Service is committed to providing a positive customer experience.

With nearly 34,000 retail locations, more than 7 million daily visits on usps.com and serving 153.9 million residences and 12.6 million businesses typically six days a week, the Postal Service is committed to providing a positive customer experience.

10

Fact #648 | Updated: April 17, 2024

We're universal. Everyone living in the United States and its territories (Puerto Rico, U.S. Virgin Islands, Guam, American Samoa and the N. Mariana Islands) has access to postal products and services and pays the same for a First-Class Mail postage stamp regardless of the sender's location.

9

Fact #600 | Updated: April 17, 2024

We're essential. The Postal Service provides a vital public service, is a part of the nation's critical infrastructure and was created by an act of Congress.

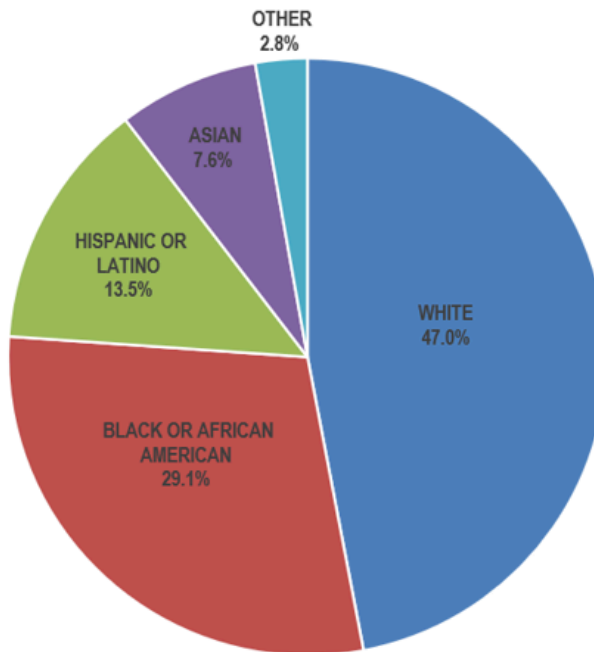
The statute that created the Postal Service begins with the following sentence: "The United States Postal Service shall be operated as a basic and fundamental service provided to the people by the Government of the United States, authorized by the Constitution, created by an Act of Congress, and supported by the people." 39 U.S.C. §101(a).

8

Fact #580 | Updated: April 17, 2024

The Postal Service is diverse. The strength of the Postal Service lies in its amazing diversity. Historically underrepresented racial groups account for 53 percent of the workforce.

#### U.S. POSTAL SERVICE RACIAL / ETHNICITY COMPOSITION



AS OF SEP. 30, 2023

7

Fact #563 | Updated: April 17, 2024

We're socially responsible. The Postal Service supports communities nationwide. These efforts include facilitating the nation's largest one-day food drive, working with customers to prevent dog bites, educating customers on consumer protection, and delivering holiday magic through USPS Operation Santa.



6

*Fact #97 | Updated: April 22, 2024*

We have heroes among us. Postal employees regularly go beyond the call of duty to protect the lives of the people they serve, including elderly or disabled customers through the Carrier Alert Program.

In 2023, the Postal Service recognized 128 heroic employees.

5

*Fact #599 | Updated: April 22, 2024*

We're greener than you think. The Postal Service is working hard to put its stamp on a greener tomorrow for the organization and the communities we serve.

For more information on the Postal Service's sustainability efforts and initiatives, go to Sustainability – What We Do – About.usps.com (<https://about.usps.com/what/corporate-social-responsibility/sustainability/welcome.htm>)



4

*Fact #98 | Updated: April 22, 2024*

We're a retail giant. The Postal Service has the nation's largest retail network (33,904) — larger than Subway (20,603), Dollar General (19,572), Starbucks (16,370) and McDonald's (13,541).

3

*Fact #92 | Updated: April 22, 2024*

We compete and collaborate. The Postal Service both competes and collaborates with the private sector. UPS and FedEx pay the Postal Service to deliver their ground packages, and the Postal Service pays UPS and FedEx for air transportation.

2

*Fact #88 | Updated: April 22, 2024*

We're secure. U.S. Mail is protected by more than 200 federal laws enforced by the Postal Inspection Service, one of the nation's oldest law enforcement agencies.

And most importantly...

1

*Fact #59 | Updated: April 22, 2024*

We're self-funding. The Postal Service generally receives no tax dollars for operating expenses and relies on the sale of postage, products and services to fund its operations.

# A decade of facts & figures

	2023	2022	2021	2020	2019	2018	2017	2016	2015	2014
<b>Annual operating revenue</b>	\$78.2 B	\$78.8 B	\$77 B	\$73.1 B	\$71.1 B	\$70.6 B	\$69.6 B	\$71.4 B	\$68.8 B	\$67.8 B
<b>Career employees*</b>	525,469	516,750	516,636	495,941	496,934	497,157	503,103	508,908	491,863	488,300
<b>Mail volume</b>	116.2 B	127.3 B	128.9 B	129.2 B	142.6 B	146.4 B	149.5 B	154.3 B	154.3 B	155.5 B
<b>First-Class Mail volume</b>	46 B	48.9 B	50.7 B	52.6 B	54.9 B	56.7 B	58.7 B	61.2 B	62.6 B	63.8 B
	2023	2022	2021	2020	2019	2018	2017	2016	2015	2014
<b>First-Class Single Piece Mail volume**</b>	11.8 B	12.9 B	13.9 B	15.2 B	16.5 B	17.5 B	18.5 B	19.7 B	20.7 B	21.8 B
<b>Shipping/Package volume***</b>	7.1 B	7.2 B	7.6 B	7.3 B	6.2 B	6.2 B	5.7 B	5.2 B	4.5 B	4 B
<b>Marketing mail volume</b>	59.4 B	67.1 B	66.2 B	64.1 B	75.7 B	77.3 B	78.3 B	80.9 B	80 B	80.3 B
<b>Delivery points</b>	166.6 M	164.9 M	163.1 M	161.4 M	160 M	158.6 M	157.3 M	156.1 M	155 M	153.9 M
	2023	2022	2021	2020	2019	2018	2017	2016	2015	2014
<b>Address changes</b>	28.3 M	33.2 M	36 M	35.9 M	35.8 M	36.8 M	36.8 M	37 M	37 M	34.4 M
<b>Total retail offices</b>	33,904	33,641	34,223	34,451	34,613	34,772	35,005	35,423	35,520	35,649
<b>Postal-managed retail offices</b>	31,123	31,132	31,247	31,330	31,322	31,324	31,337	31,585	31,606	31,662
<b>Retail customer visits</b>	665.3 M	689.9 M	749.1 M	768.1 M	811.8 M	838.7 M	857.1 M	877.4 M	919.5 M	948.7 M
	2023	2022	2021	2020	2019	2018	2017	2016	2015	2014
<b>Retail revenue</b>	\$11.6 B	\$12.2 B	13 B	12.7 B	12.7 B	12.7 B	12.9 B	13.5 B	19.2 B	19 B

	2023	2022	2021	2020	2019	2018	2017	2016	2015	2014
<b>Postal Service-managed retail office revenue</b>	\$9.6 B	\$9.7 B	10.5 B	10.1 B	10.1 B	9.8 B	9.9 B	10.2 B	10.4 B	10.7 B
<b>Alternate access revenue</b>	\$2 B	\$2.3 B	2.7 B	2.5 B	2.5 B	2.9 B	3.1 B	3.2 B	8.8 B	8.3 B
<b>Alternate access revenue percentage</b>	17.5%	18.8%	20.2%	19.8%	19.8%	23%	23.75%	23%	45.7%	43.7%
	2023	2022	2021	2020	2019	2018	2017	2016	2015	2014
<b>Total delivery routes</b>	234,344	233,585	233,171	231,579	231,807	231,843	228,483	229,104	226,777	224,365
<b>Total vehicles</b>	246,503	236,532	232,368	231,541	228,940	232,372	230,939	227,896	214,933	211,264

**Trademarks**

The Sonic Eagle Logo, the trade dress of USPS packaging, the Letter Carrier Uniform and the Postal Truck and the following marks are among the many trademarks owned by the United States Postal Service: Click-N-Ship®, Deliver The Win®, EDDM®, ePostage®, Every Door Direct Mail®, Express Mail®, First-Class™, First-Class Mail®, First-Class Package International Service®, Forever®, Global Express Guaranteed®, IMb®, Informed Delivery®, Intelligent Mail®, Label Broker™, Parcel Select®, P.O. Box™, Post Office®, Pony Express®, Postal Inspection Service™, PostalOne!®, Postal Police®, #PostalProud®, Priority Mail Express International®, Priority Mail Flat Rate®, Priority Mail International®, Priority: You®, Registered Mail™, Standard Mail®, The Postal Store®, United States Postal Inspection Service®, United States Postal Service®, U.S. Mail®, U.S. Postal Inspector™, U.S. Postal Service®, USPS®, USPS BlueEarth®, USPS Mobile®, USPS Operation Santa®, USPS Tracking®, usps.com®, We are people delivering to people™, ZIP+4® and ZIP Code™. This is not a comprehensive list of all Postal Service trademarks.

**Non-Postal Trademarks**

Dollar General®, Forest Stewardship Council®, How2Recycle®, McDonald's®, National Dog Bite Prevention Week®, Starbucks®, Subway®, Sustainable Forestry Initiative®, The Climate Registry®.

Postal Facts 2024 provides the public with information about the U.S. Postal Service. The facts in this publication may be reproduced for the purpose of stating the fact itself, in a business, informational or academic context and the like, and in the body of text discussing factual subject matter relevant to the fact being presented. However, these facts may become outdated after publication and seeking the latest information is advised.

Produced by U.S. Postal Service Corporate Communications

© 2024 United States Postal Service. All rights reserved.

facts.usps.com (<https://www.facts.usps.com>)

© 2016-2024 United States Postal Service. All rights reserved.