



POSTAL FACTS

Introduction

The United States Postal Service has a storied history, familiar to many. It began with the Second Continental Congress and Benjamin Franklin in 1775. It continued when the U.S. Constitution empowered Congress to establish Post Offices and post roads in 1787. Congress exercised those powers with the passage of the Post Office Act of 1792, which made postal services a permanent fixture of the federal government.

The act included provisions to facilitate freedom of the press, ensure the privacy of personal correspondence, and expand the nation's physical infrastructure, all vital to the nation's growth and prosperity. These principles and objectives endure. While radio, television, email, and the internet have irrevocably altered information-gathering habits, postal correspondence remains the most secure and resilient form of communication, providing the American people with a delivery infrastructure vital to national security.

The Postal Service retains the largest physical and logistical infrastructure of any non-military government institution, providing an indispensable foundation supporting an ever-changing and evolving nationwide communication network.

Today, the U.S. Postal Service is part of the fabric of this nation. We deliver more mail and packages than any other post in the world. We serve more than 163 million addresses in this country — covering every state, city, and town. Everyone living in the United States and its territories has access to postal products and services and pays the same for a First-Class Mail postage stamp regardless of location. We make the connections. Friends and families. Businesses and customers. We deliver to every community in America, from the biggest cities to the smallest villages. This is our public service mandate — to bind the nation together. This is our commitment — to provide secure, reliable, affordable delivery of mail and packages. It's what we do! Always have. Always will.

About Postal Facts

The Postal Service delivers for America. You know that. And you know we've been doing it for a long time. But do you know exactly how much we deliver? Every day? Each year? Do you know we have programs designed to help the customers and communities we serve? Do you know that we are a seriously high-tech company? But that we also have a Fleet of Feet? And, do you know that the "ZIP" in ZIP Code is an acronym? You can find answers to these questions and so much more at *facts.usps.com* (<https://www.facts.usps.com>).

Our history goes all the way back to the founding of the nation. Postal Facts is a great place to learn about where we've been, where we are today and where we're going tomorrow.

We're proud to provide secure, reliable, and affordable service to every address in the United States, plus its territories and its military and diplomatic installations worldwide. And consider this very important fact: Everyone in the United States and its territories has access to postal products and services and pays the same for a First-Class Mail postage stamp regardless of location.

Want even more information? We'll keep you posted. You can connect with us in many ways, including:

Facebook (<http://facebook.com/usps>) | Twitter (<http://twitter.com/usps>) | Instagram (<http://instagram.com/uspostalservice>) | LinkedIn (<http://linkedin.com/company/usps>) | YouTube (<http://youtube.com/usps>)

#POSTALPROUD

Unless otherwise noted, all figures are based on the Postal Service's fiscal year.

Social good

Focusing on what's good for the communities we serve.

The Postal Service is part of the fabric of the nation, with employees making a difference in every community across the country. We're committed to protecting our customers, collecting food, helping children have a happier holiday and to being an environmental steward.

HONORING service men and women

Fact #890 | Updated: February 28, 2022

Honoring service men and women. The Postal Service proudly partners with the Department of Veterans Affairs to provide burial flags to families of deceased veterans. In 2021, the Postal Service provided 452,000 flags.



54,000 pounds of batteries

Fact #719 | Updated: March 7, 2022

The Postal Service recycled 54,000 pounds of small lead-acid and dry cell batteries, including lithium-ion batteries, which are found in cellphones, laptops, scanners and other small electronics.

361,000 gallons of oil recycled

Fact #718 | Updated: March 7, 2022

In 2021, the Postal Service recycled 361,000 gallons of used oil — equivalent to saving more than 15 million gallons of crude oil.

50 bicycle delivery routes

Fact #717 | Updated: March 7, 2022

The Postal Service delivers mail by bicycle on 50 routes in Arizona and Florida -- reducing emissions, saving fuel and the carriers can ride a bike all day!

STAMP OUT Hunger Food Drive

Fact #683 | Updated: March 7, 2022

Every year, the Postal Service and the National Association of Letter Carriers hold the largest one-day food drive in the nation. In 2021, the food drive was cancelled due to the coronavirus. Customers were encouraged to take food to local food banks and pantries. The program has collected more than 1.7 billion pounds of food since the campaign began in 1993.



5,448
dog attacks

Fact #681 | Updated: March 7, 2022

Thousands of carriers deliver to homes with dogs every day. The Postal Service promotes safety initiatives and shares prevention tips to protect employees and customers from dog bites. In 2021, 5,448 employees were attacked by dogs while delivering the U.S. Mail.

National Dog Bite Prevention Week (June 5 – June 11, 2022) addresses aggressive dog behaviors that pose serious threats to Postal Service employees delivering mail and how communities they serve can play a part in their safety.

**BIG OR SMALL.
YOUNG OR OLD.
MALE OR FEMALE.
ANY DOG CAN BITE.
EVEN THE
CUDDLIEST,
FUZZIEST, SWEETEST
DOG CAN BITE.**



**CARRIER
ALERT** program

Fact #680 | Updated: March 7, 2022

As one of the few points of human contact for some home-bound customers, letter carriers are particularly attuned to signs that could indicate an accident or illness. If carriers notice something unusual, such as uncollected mail, at an at-risk customer's home, the employee will alert emergency personnel. Carrier Alert began in 1982.

**POSTAL
BLUE**
is getting
greener

Fact #655 | Updated: March 7, 2022

The Postal Service is working hard to put its stamp on a greener tomorrow for the many communities we serve. Postal carriers deliver mail using alternative fuel vehicles, on foot and even on bicycles. The 2020 energy reduction in postal buildings equated to powering more than 36,000 U.S. homes and the Postal Service is expanding solar powered facilities in 2021.

**277,994
TONS**
recycled paper,
plastic, etc
Fact #534 | Updated: March 7, 2022

In 2021, the Postal Service recycled 176,416 tons of mixed paper, 78,044 tons of cardboard, 4293 tons of plastic, 2733 tons of metal, 895 tons of electronic equipment and more. The combined total of all solid waste recycled in 2021 was 277,994 tons.

The Postal Service is an environmental leader. We believe it's our responsibility to be good stewards of the environment.

- The USPS National Recycling Operation uses our existing transportation network to backhaul recyclables, particularly mixed paper, from Post Offices to central collection hubs for consolidation.
- In 2021, the Postal Service recycled 176,416 tons of mixed paper, 78,044 tons of cardboard, 4293 tons of plastic, 2733 tons of metal, 895 tons of electronic equipment and more. The combined total of all solid waste recycled in 2021 was 277,994 tons.
- The Postal Service collaborates with large mailers to securely process and destroy undeliverable-as-addressed or return-to-sender First-Class Mail with its USPS BlueEarth Secure Destruction mail service. This is a win-win. The program helps reduce mailing industry carbon impact and reduces costs. In 2021, the Postal Service securely processed and recycled 111.76 million pieces of mail.
- The USPS BlueEarth Federal Recycling Program transports and recycles used electronics for federal agencies with no shipping or item disposition costs. This free program is available to all federal agencies and federal employees. Thirty-seven U.S. federal agencies are enrolled in this sustainable mail service program and in 2021 recycled 268,745 pounds and refurbished 188,501 pounds of inkjet/toner cartridges and small electronics.

25,755
solar panels

Fact #376 | Updated: February 28, 2022

Sunny times ahead. The Postal Service has a solar power generation system consisting of more than 25,755 solar panels at its Los Angeles mail processing facility. This expands the Postal Service's use of alternative energy and makes the processing facility one of the largest buildings generating electricity through solar energy in the city.

**25%
LESS**
by 2025
Fact #372 | Updated: March 4, 2021

The Postal Service has a goal to reduce energy used per square foot of building space by 25 percent by 2025.

USPS
Operation Santa
Fact #284 | Updated: March 10, 2022

For 109 years, postal employees and the American public have helped bring more magic to the holiday season, one letter to Santa at a time.



In 2021, 4.3 million people visited *USPSOperationSanta.com* (<https://www.USPSOperationSanta.com>), more than 203,000 profiles were created, and the identity verification success rate was 93.5 percent. Generous customers adopted 21,175 letters and shipped 21,443 packages, helping families and children experience the magic of the season when they might not have otherwise, one letter to Santa at a time.

In 2020, the program expanded nationwide for the first time. More than 1 million people visited *USPSOperationSanta.com*. Generous customers shipped more than 21,000 packages to the families and children who wrote to Santa to help them have a happier holiday.

In 2019, the digital program continued to expand. Letters were accepted letters from 17 locations, and the letters could be adopted by anyone in the country. Gifts could be shipped from more than 19,000 post offices.

In 2018, the Postal Service expanded the 2017 pilot test to include 6 additional cities (Austin, Indianapolis, Philadelphia, Phoenix, San Diego, Washington DC – and Puerto Rico and Chico, CA (site of wildfires). Letters from those locations populated the website and people in those locations only could adopt them and ship from one dedicated post office per city.

In 2017, the Postal Service launched a pilot test of a digital Operation Santa option for residents of New York City. People living in New York City, within proximity of the James A. Farley building could adopt letters online and ship gifts from JAF. Puerto Rico was also added after the hurricanes that year.

HISTORY

In 1912, Postmaster General Frank Hitchcock authorized local postmasters to allow postal employees and citizens to respond to letters addressed to Santa Claus and the program came to be known as *Operation Santa*.

In the 1940s, mail volume increased to the point where the Post Office Department invited charitable organizations and corporations to participate for philanthropic purposes —providing written responses and small gifts.

Through the years, the program has taken on a life of its own and today cities around the country have established successful programs with recognized charitable organizations, major corporations, local businesses and postal employees making a major difference in the lives of the children from coast to coast.



SUSTAINABLE

Forestry Initiative

Fact #599 | Updated: March 1, 2022

6,600
letter carriers

Fact #72 | Updated: March 7, 2022

34,200
alternative fuel
vehicles

Fact #40 | Updated: March 7, 2022

Greener than you think. Our Priority Mail boxes meet Sustainable Forestry Initiative and Forest Stewardship Council certification standards. This means the paper for those boxes comes from well-managed forests. In addition, the boxes include at least 30-percent recycled content and as an additional bonus, they're free!

Nearly 74,000 letter carriers drive to neighborhoods and then deliver the mail on foot. Nearly 6,600 carriers deliver mail entirely on foot -- the USPS Fleet of Feet. Mail is delivered by bicycle on select routes in Arizona and Florida, reducing emissions and saving fuel.

The Postal Service operates a fleet of 34,200 alternative fuel-capable vehicles, most of which are equipped to use ethanol. There are electric, hybrid, compressed natural gas and liquid propane gas vehicles in the fleet as well. The Postal Service has 100 hybrid 2-ton vehicles. Fifty are electric hybrid and fifty are hydraulic hybrid.

Fun facts

The lighter side of the business

Really? You didn't know this? Impress people with your knowledge of some fun, interesting facts.

COMPANION PDF – 2022 ([HTTPS://FACTS.USPS.COM/WP-CONTENT/UPLOADS/FUN-FACTS.PDF](https://facts.usps.com/wp-content/uploads/fun-facts.pdf))

LARGEST ZIP in Contiguous US

Fact #971 | Updated: March 21, 2022

The largest ZIP Code in the contiguous U.S. is 89049, Tonopah, NV, at 10,821 square miles.

Twenty-four of the top 25 largest ZIP Codes in the country are located in Alaska – ranging from the largest, 99734, at more than 30,000 square miles to 99741 at 7,600 square miles. The 14th spot goes to Nevada, 89049.



LARGEST ZIP in continental US

Fact #969 | Updated: March 21, 2022

The largest ZIP Code in the continental U.S. is 99734, Prudhoe Bay, AK, at 30,683 square miles.

Twenty-four of the top 25 largest ZIP Codes in the country are located in Alaska – ranging from the largest, 99734, at more than 30,000 square miles to 99741 at 7,600 square miles. The 14th spot goes to Nevada, 89049.



FAMOUS postal employees

Fact #869 | Updated: February 28, 2022

Heads of industry. Hollywood legends. Sports heroes. Singers. Painters. Writers. And a couple presidents. All were postal employees before they became household names! Twelve have even been featured on stamps.

Most people know that Benjamin Franklin worked for the Postal Service, but did you know that Bing Crosby and Walt Disney did, too? What about Steve Carrell or Charles Lindbergh? John Prine or Brittany Howard?

Twelve of these former employees have also been commemorated on U.S. postage stamps and are marked by an asterisk.

▪ John Brown	Abolitionist	Postmaster, Randolph, PA – 1828-1835
▪ Steve Carell	Actor, comedian	Rural letter carrier, Littleton, MA – 1985
▪ Bing Crosby*	Singer, actor	Substitute and regular clerk, Spokane, WA – 1921
▪ Walt Disney*	Film producer	Substitute carrier, Chicago, IL – 1918
▪ William Faulkner*	Novelist	Postmaster, University, MS – 1921-1924
▪ Benjamin Franklin*	Statesmen, inventor	Postmaster General, 1775-1776
▪ Sherman Hemsley	Actor	Clerk, Philadelphia, PA, and New York, NY – 1960s
▪ Conrad Hilton	Hotel magnate	Postmaster, San Antonio, NM – 1910-1911
▪ Harry Hooper	Baseball Hall-of-Famer	Postmaster, Capitola, CA – 1933-1957
▪ Brittany Howard	Singer, Alabama Shakes	Rural carrier assistant, Athens, AL – 2011
▪ Rock Hudson	Actor	Substitute letter carrier, Winnetka, IL – ca. 1947
▪ Sidney Lanier*	Poet	Clerk, Macon, GA – ca. 1858
▪ Abraham Lincoln*	U.S. President	Postmaster, New Salem, IL – 1833-1836
▪ Charles Lindbergh*	Aviator	Airmail pilot – 1926-1927
▪ Fred C. Lindstrom	Baseball Hall-of-Famer	Postmaster, Evanston, IL – 1961-1972
▪ Samuel F. B. Morse	Inventor	Superintendent, Telegraph Unit – 1845-1846
▪ John Prine	Singer, songwriter	Letter carrier, Maywood, IL – 1964-1969
▪ Knute Rockne*	Football coach	Substitute and regular clerk, Chicago, IL – 1907-1910
▪ Adlai E. Stevenson	U.S. Vice President	First Assistant Postmaster General – 1885-1889
▪ Harry S. Truman*	U.S. President	Postmaster, Grandview, MO – 1914-1915
▪ John Wanamaker	Retail magnate	Postmaster General – 1889-1893
▪ Noah Webster*	Lexicographer	Special agent – 1793
▪ Hal Williams	Actor	Clerk, Los Angeles, CA – 1968-70s
▪ Richard Wright*	Author	Substitute clerk, Chicago, IL – 1929-1932
▪ N.C. Wyeth*	Painter	Mail carrier, Fort Defiance, AZ, to Crozier, NM – 1904

© IS FOR CREATIVE

Fact #884 | Updated: February 28, 2022

© is for creative. The Postal Service has more than 500 copyright registrations, many of them to protect artwork on postage stamps.

FARM GOODS delivered by mail

Fact #879 | Updated: February 28, 2022

The farm-to-table concept isn't new. From 1914 to 1920, the farm-to-table program was a novel initiative that allowed farmers to arrange prices with people in urban areas and then mail them fresh meats, eggs, dairy products, produce, honey, jelly, and more. This was a way to give farmers more customers and city dwellers greater and cheaper access to fresh goods.

NEWSPAPERS and the U.S. Mail

Fact #878 | Updated: February 28, 2022

Extra! Extra! American newspapers largely owe their existence to Post Offices. As part of the Post Office Act of 1792, newspapers were permitted to be mailed at extremely low rates. By the start of the 19th century, newspapers made up the bulk of the U.S. Mail.

1639 first post office

Fact #877 | Updated: February 28, 2022

SINGING mailman

Fact #746 | Updated: February 25, 2022

The first Post Office in America was established in a tavern in Boston in 1639.

John Prine, singer and songwriter, was a letter carrier in Maywood, IL, 1964-1969.

FAMOUS POSTAL EMPLOYEES

Most people know that Benjamin Franklin worked for the Postal Service, but did you know that Bing Crosby and Walt Disney did, too? What about Steve Carrell or Charles Lindbergh? John Prine or Brittany Howard? Twelve of these former employees have also been commemorated on U.S. postage stamps and are marked by an asterisk.

▪ John Brown	Abolitionist	Postmaster, Randolph, PA – 1828-1835
▪ Steve Carell	Actor, comedian	Rural letter carrier, Littleton, MA – 1985
▪ Bing Crosby*	Singer, actor	Substitute and regular clerk, Spokane, WA – 1921
▪ Walt Disney*	Film producer	Substitute carrier, Chicago, IL – 1918
▪ William Faulkner*	Novelist	Postmaster, University, MS – 1921-1924
▪ Benjamin Franklin*	Statesmen, inventor	Postmaster General, 1775-1776
▪ Sherman Hemsley	Actor	Clerk, Philadelphia, PA, and New York, NY – 1960s
▪ Conrad Hilton	Hotel magnate	Postmaster, San Antonio, NM – 1910-1911
▪ Harry Hooper	Baseball Hall-of-Famer	Postmaster, Capitola, CA – 1933-1957
▪ Brittany Howard	Singer, Alabama Shakes	Rural carrier assistant, Athens, AL – 2011
▪ Rock Hudson	Actor	Substitute letter carrier, Winnetka, IL – ca. 1947
▪ Sidney Lanier*	Poet	Clerk, Macon, GA – ca. 1858
▪ Abraham Lincoln*	U.S. President	Postmaster, New Salem, IL – 1833-1836
▪ Charles Lindbergh*	Aviator	Airmail pilot – 1926-1927
▪ Fred C. Lindstrom	Baseball Hall-of-Famer	Postmaster, Evanston, IL – 1961-1972
▪ Samuel F. B. Morse	Inventor	Superintendent, Telegraph Unit – 1845-1846
▪ John Prine	Singer, songwriter	Letter carrier, Maywood, IL – 1964-1969
▪ Knute Rockne*	Football coach	Substitute and regular clerk, Chicago, IL – 1907-1910
▪ Adlai E. Stevenson	U.S. Vice President	First Assistant Postmaster General – 1885-1889
▪ Harry S. Truman*	U.S. President	Postmaster, Grandview, MO – 1914-1915
▪ John Wanamaker	Retail magnate	Postmaster General – 1889-1893
▪ Noah Webster*	Lexicographer	Special agent – 1793
▪ Hal Williams	Actor	Clerk, Los Angeles, CA – 1968-70s
▪ Richard Wright*	Author	Substitute clerk, Chicago, IL – 1929-1932
▪ N.C. Wyeth*	Painter	Mail carrier, Fort Defiance, AZ, to Crozier, NM – 1904

1 DAY in the Postal Service

Fact #840 | Updated: February 25, 2022

Each day the Postal Service picks up, processes and delivers millions of letters and packages. No single operation in the world comes close to this level of connectivity for so many households and businesses.

Just One Day in the Life of the U.S. Postal Service . . . By the Numbers

Each day the Postal Service picks up, processes and delivers millions of letters and packages. No single operation in the world comes close to this level of connectivity for so many households and businesses.

Here's just ONE day in the life of the Postal Service. (Figures are averages.)

254.2M	— revenue received, in dollars
165.3M	— dollars paid to postal employees in salaries and benefits
425.3M	— number of mail pieces processed and delivered
17.7M	— average number of mail pieces processed each hour
295,336	— average number of mail pieces processed each minute
4,922	— average number of mail pieces processed each second
167.3M	— pieces of First-Class Mail processed and delivered
25M	— packages processed and delivered
6,600	— number of letter carriers who deliver mail entirely on foot — <i>The USPS Fleet of Feet</i>
98,630	— number of address changes processed
5,825	— number of addresses added to our delivery network
12.3M	— number of people who visit <i>usps.com</i>
1.24M	— dollars spent at The Postal Store at <i>usps.com</i>
235,917	— number of money orders issued

DAILY NEWS LINK

Fact #803 | Updated: February 25, 2022

Link, a daily news site for Postal Service employees, is available on any computer with internet access. The content is produced by a team of writers and editors based at USPS headquarters in Washington, DC. Additional contributions come from postal employees across the nation. The site is updated with new articles, photos, graphics and videos each weekday.

LINK

Regular features include “Heroes’ Corner,” a column about employees who perform heroic deeds, and “On the Move,” a weekly roundup of employees who’ve received new appointments or recognition.

Employees with postal email addresses receive a Link email each weekday with links to the most recent stories. The team also produces an end-of-week Link Recap email with stories readers might have missed, along with Link Extra emails for breaking news.

Link mobile is a mobile-friendly version of the Link site. Link mobile has all the news you’ll find on the desktop version of Link, except it’s formatted for easy reading on handheld smart devices. Employees and others can receive a weekly Link mobile email by subscribing at [www.usps.link](https://gcc02.safelinks.protection.outlook.com/?url=http%3A%2F%2Fwww.usps.link%2F&data=04%7C01%7Csue.brennan%40usps.gov%7Ccc68cdb55c4e421f9f7308d9f894bb6b%7Cf9aa5788eb334a498ad076101910cac3%7C0%7C0%7C637814139941525249%7) (<https://gcc02.safelinks.protection.outlook.com/?url=http%3A%2F%2Fwww.usps.link%2F&data=04%7C01%7Csue.brennan%40usps.gov%7Ccc68cdb55c4e421f9f7308d9f894bb6b%7Cf9aa5788eb334a498ad076101910cac3%7C0%7C0%7C637814139941525249%7>)

CUnknown%7CTWFpbGZsb3d8eyJWlloiMC4wLjAwMDAiLCJQIjoiV2luMzliLCJBTiI6I6k1haWwiLCJXVCI6Mn0%3D%7C3000&sdata=NUmEqQWyJulwpK4CcLTQWzJqSmyZ%2BjSEjrEFh5jICmQ%3D&reserved=0).

OWNEY the postal dog

Fact #776 | Updated: February 25, 2022

On an autumn day in 1888, a shaggy pup took his first steps toward becoming a postal legend when he crept into the Albany, New York, Post Office. Postal employees allowed him to stay and named him Owney.

At first, Owney stayed close to the Post Office, but he soon began riding mail wagons to the train depot and then rode the railway mail car down to New York City and back to Albany. As Owney traveled farther, his friends at the Albany Post Office feared he might wander too far away to find his way home again, so they purchased a leather collar with a tag reading "Owney, Post Office, Albany, N.Y." Railway mail clerks recorded Owney's travels by attaching metal baggage tags to his collar to identify the rail lines he traveled on. He was soon weighed down by his collection of tags. Postmaster General John Wanamaker presented Owney with a little jacket to distribute their weight more evenly.

Owney took to traveling farther and staying away longer, eventually visiting Mexico, Canada, Japan, China, Singapore, Suez, Algiers, and the Azores. While being shown off to an Ohio newspaper reporter, Owney bit the clerk who was handling him. The Postmaster had Owney put down on June 11, 1897. Railway mail clerks chipped in money to have a taxidermist preserve Owney's body, which then was sent to postal headquarters in Washington, D.C., for exhibit. In 1911, the Post Office Department entrusted Owney to the Smithsonian Institution. Since 1993, Owney has been part of the National Postal Museum in Washington, D.C. In 2011, Owney was honored on a commemorative U.S. postage stamp.



POSTMASTER LINCOLN

Fact #774 | Updated: February 25, 2022

On May 7, 1833, 24-year-old Abraham Lincoln was appointed Postmaster of New Salem, Illinois. Lincoln served until the office was closed May 30, 1836.

Two postmasters became U.S. Presidents later in their careers — Abraham Lincoln and Harry Truman. Truman held the title and signed papers but immediately turned the position and its pay over to an assistant. Lincoln was the only President who served as a Postmaster.

On May 7, 1833, 24-year-old Lincoln was appointed Postmaster of New Salem, Illinois. Lincoln served until the office was closed May 30, 1836. Postal records show that Lincoln earned \$55.70 as Postmaster in fiscal year 1835 and \$19.48 for one quarter's work in fiscal year 1837. Besides his pay, Lincoln, as Postmaster, could send and receive personal letters free and get one daily newspaper delivered free. Mail arrived once a week. If an addressee did not collect the mail, as was the custom, Lincoln delivered it personally — usually carrying the mail in his hat. Even then, Lincoln was “Honest Abe.”

Reportedly, when the New Salem Post Office was discontinued, Lincoln had a balance of \$16 or \$18, which he took with him to Springfield, Illinois. Months later, while his close friend Dr. A. G. Henry was visiting, a Post Office agent called on Lincoln to collect the funds. Henry knew that Lincoln had been in financial straits and feared that he might not have the money. Henry recalled that just as he was about to offer Lincoln a loan, the future President:

“ . . . went over to his trunk at his boarding house, and returned with an old blue sock with a quantity of silver and copper coin tied up in it. Untying the sock, he poured the contents on the table and proceeded to count the coin, which consisted of such silver and copper pieces as the country-people were then in the habit of using in paying postage. On counting it up there was found the exact amount, to a cent, of the draft, and in the identical coin which had been received. He never used, under any circumstances, trust funds.”



SHIP mail delivery

Fact #772 | Updated: February 25, 2022

Ship Ahoy! The JW Westcott is a 45-foot contract mail boat out of Detroit that delivers mail to passing ships on the Detroit River. The JW Westcott has its own ZIP Code — 48222.



This is the J.W. *Westcott II* approaching a Canadian freighter on the Detroit River

POST OFFICE

with walk-in
freezers

Fact #770 | Updated: February 25, 2022

The Peach Springs, AZ, Post Office has walk-in freezers for food destined for delivery by mule train to the bottom of the Grand Canyon.



STAMPS

in caves

Fact #768 | Updated: February 25, 2022

No troglodytes here! The Stamp Fulfillment Service facility, located in Kansas City, MO, is located in a limestone cave 150 feet beneath the ground. It is the Postal Service's only facility located underground.

The consistent, year-round temperatures and humidity levels in the caves allow the stamps to be maintained in mint-quality condition. The underground facility also keeps the inventory and employees safe from snow, flooding, winds and tornadic activity common in the Midwest.

MR. ZIP

Fact #754 | Updated: February 25, 2022

Mr. ZIP, who has no first name, appeared in many public service announcements and advertisements urging postal customers to use the five-digit ZIP Code that was initiated on July 1, 1963. Within four years of his appearance, eight out of ten Americans knew who Mr. ZIP was and what he stood for.



With the introduction of the nine-digit ZIP Code, or ZIP+4, in 1983, Mr. ZIP went into partial retirement. His image still was printed on the selvage of some sheets of stamps, but that practice ended in January 1986. Mr. ZIP still is used occasionally by the Postal Service.



50 bicycle delivery routes

Fact #717 | Updated: March 7, 2022

The Postal Service delivers mail by bicycle on 50 routes in Arizona and Florida -- reducing emissions, saving fuel and the carriers can ride a bike all day!

GLOBAL bargain

Fact #714 | Updated: March 7, 2022

The price of a First-Class postage stamp is a global bargain.



Postage Prices are nominal prices converted to USD, not adjusted for purchasing power parity. Exchange rates are as of January 27, 2022.

1ST AMERICAN woman on a stamp

Fact #696 | Updated: March 9, 2021

The first American woman on a U.S. postage stamp was Martha Washington, 1902.

FIRST African American Carrier

Fact #695 | Updated: March 9, 2021

The first known African American mail carrier was James B. Christian, Richmond, VA, 1869.

FIRST KNOWN female mail carrier

Fact #689 | Updated: March 9, 2021

The first known female mail carrier was Sarah Black, mail messenger, Charlestown, MD, 1845.

ORIGINAL social network

Fact #661 | Updated: March 7, 2022

The Postal Service is the original social network, but that doesn't mean we aren't represented on the others. You can find the Postal Service on Facebook, Twitter, Instagram, LinkedIn and YouTube.

Facebook — [facebook.com/usps](http://www.facebook.com/usps) (<http://www.facebook.com/usps>)

Twitter — [twitter.com/usps](http://www.twitter.com/usps) (<http://www.twitter.com/usps>)

Instagram — [instagram.com/uspostalservice](http://www.instagram.com/uspostalservice) (<http://www.instagram.com/uspostalservice>)

LinkedIn — [linkedin.com/company/usps](http://www.linkedin.com/company/usps) (<http://www.linkedin.com/company/usps>)

YouTube — [youtube.com/usps](http://www.youtube.com/usps) (<http://www.youtube.com/usps>)

PATENTLY the best

Fact #647 | Updated: February 28, 2022

Patently the best. The United States Patent and Trademark Office has issued more than 500 patents to the United States Postal Service.

385 DOMESTIC trademarks

Fact #646 | Updated: February 28, 2022

Leaving a mark! The Postal Service has 385 domestic and 1,000 foreign trademark registrations.

84,000 vehicle batteries

Fact #644 | Updated: February 28, 2022

We keep running and running. The Postal Service purchased 76,000 vehicle batteries in 2021.

527,000 wiper blades

Fact #642 | Updated: March 7, 2022

Better to see you with! The Postal Service ordered 527,000 wiper blades in 2021.

WE deliver!

Fact #641 | Updated: March 7, 2022

The Postal Service moves mail by planes, hovercraft, trains, trucks, cars, boats, ferries, helicopters, subways, bicycles, mules and feet.
#WeDeliverForYou

UNSTAFFED Post Office

Fact #640 | Updated: March 8, 2021

There is a 24-hour, unstaffed, self-service Post Office in Northern Virginia that allows customers to conduct most shipping and mailing transactions quickly and easily themselves. The Self-Service Post Office provides round-the-clock accessibility to PO Boxes, as well as self-service kiosks and an automated package drop.

In 2020, more than 8,000 customers took advantage of this convenient office.

FLAGS at Post Offices

Fact #639 | Updated: February 28, 2022

Post Offices were first required to display the American flag in 1885 to comply with Treasury Department instructions. On Nov. 7, 2019, Post Offices were required to fly the Prisoner of War (POW)-Missing In Action (MIA) flag on the same days that the American flag is flown.

In 2021, the Postal Service replaced 31,874 American Flags and 27,550 POW/MIA Flags.

POSTAL BULLETIN

Fact #637 | Updated: February 28, 2022

On time. Every time. The Postal Bulletin, a nationally distributed biweekly publication, serves as a source for official policy, procedure updates and departmental news for all USPS functions. It has never missed a deadline since its inception in 1880.

Go to <https://about.usps.com/resources/postal-bulletin.htm> (<https://about.usps.com/resources/postal-bulletin.htm>) to browse past issues.

PB 22592, February 24, 2022

postal|bulletin

PUBLISHED SINCE MARCH 4, 1980

PROTECT YOURSELF

FROM WORK-FROM-HOME SCAMS



See page 3



© 2022, UNITED STATES POSTAL SERVICE. ALL RIGHTS RESERVED.

139,868
blue collection
boxes

Fact #536 | Updated: February 28, 2022

Today there are 139,868 blue boxes in use across the nation.

About those iconic blue boxes...

They weren't always blue. Before 1970, they were green, then red, then white, then green again, and finally — beginning in 1955 — red, white and blue.



709,000
tires purchased

Fact #535 | Updated: February 28, 2022

We're rolling! The Postal Service purchased roughly 709,000 tires in 2021. If they were placed side-by-side, this tire line would measure more than 369 miles – the distance between New York City and the Cape Hatteras National Seashore or between Los Angeles and the Grand Canyon National Park.

5,825
addresses daily

Fact #524 | Updated: March 7, 2022

The Postal Service added an average of 5,825 addresses to its delivery network every day in 2021.

167.3
million pieces

Fact #523 | Updated: February 28, 2022

On average, the Postal Service processes and delivers 167.3 million pieces of First-Class Mail each day.

1.2
BILLION
rubber bands
purchased

Fact #379 | Updated: February 28, 2022

BOING! The Postal Service ordered 1.2 billion rubber bands in 2021, totaling about 65,710 miles of material that could wrap around Earth 2.6 times!



3.3 MILLION corporate emails daily

Fact #338 | Updated: March 7, 2022

With one of the largest corporate email systems, in 2021, the Postal Service handled more than 3.3 million legitimate emails a day delivered to more than 212,000 email accounts.

Staying connected

The Postal Service has one of the world's largest computer networks — linking more than 31,000 facilities and connecting hundreds of thousands of employees and hundreds of systems.

In 2021 some emails were blocked due to:

- **Spam:** More than **6 million** spam email messages were blocked monthly.
- **Content:** More than **27 million** emails were blocked monthly due to malicious content including phishing, brand spoofing, and suspicious URLs being detected.
- **Malware:** More than **9,000** email messages were blocked monthly due to malware.
- **Blocking bad actors:** More than **5 million** email messages were blocked monthly due to sender reputation.
- **Advanced Threat Detection:** More than **16,000** email messages were blocked by domain impersonation, URL and file detonation detecting malicious content, or click-time URL protection.
- On average, 34 percent of the **101 million** email messages received from external senders were blocked monthly for the safety of the Postal Service network and email users.

OUTER SPACE postage stamp

Fact #332 | Updated: March 5, 2021

Out of this world! A postage stamp was inside the New Horizons spacecraft that made a flyby of Pluto in July 2015. That's the farthest distance traveled by a postage stamp - more than 3 billion miles. So noted by the Guinness World Records.

MULE TRAIN delivery

Fact #310 | Updated: February 28, 2022

The most unusual delivery method used by the Postal Service is a mule train in Arizona. The mules carry mail, food and supplies down a 9-mile trail to the Havasupai Indians at the bottom of the Grand Canyon.

Got mules? The most unusual mode of delivery used by the Postal Service is the mule train.

Since the 1930s, mules have been carrying mail and goods to the Havasupai people located inside the Grand Canyon.

- 10-22 mules are used daily, along with one wrangler on horseback, 5 days a week, traveling 9 miles down into the canyon to the Supai Post Office.
- It takes **3 hours** to get down and **5 hours** to get back up
- On the way back up, the wrangler untethers the mules and sends them back up on their own
- Each mule can carry up to **200 pounds** and the weight is loaded equally on each side for balance
- The Supai Post Office has a special Mule Train postmark





28 Franklin cities

Fact #309 | Updated: February 28, 2022

Ben, this one's for you! Franklin is the most common city name — 28 of them — with Clinton, Madison and Washington tied for second (27 each) and Chester, Greenville, Marion and Springfield at third (25). The most common Post Office name is Clinton, with 26 locations, followed by Madison at second (25) and Franklin and Washington tied for third (24).



13,425 Main streets

Fact #307 | Updated: February 28, 2022

Main Street America is here and here and... The most common street name in the country is Main —21,514 of them — followed by Second with 17,120, Third with 15,948 and First with 14,908.

41,683 ZIP Codes

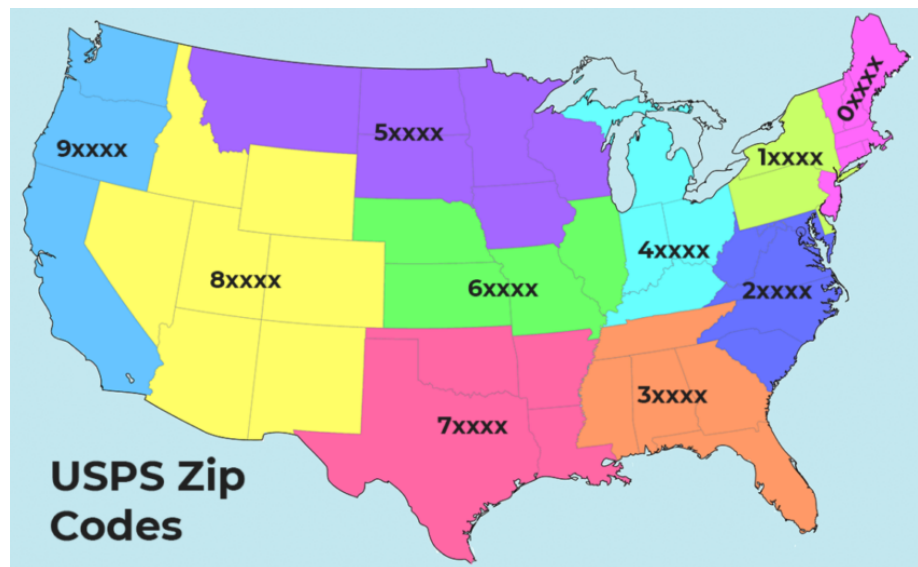
Fact #306 | Updated: February 28, 2022

There are 41,683 ZIP Codes in the country.

ZIP Codes range from 00501, belonging to the Internal Revenue Service in Holtsville, NY, to 99950 in Ketchikan, AK. Easiest to remember? How about 12345, a unique ZIP Code for General Electric in Schenectady, NY.

Quick! What's that ZIP Code?

The ZIP Code was introduced in 1963. The first number represents a general geographic area of the nation, "0" in the East moving to "9" in the West. The next two numbers indicate regional areas and the final two, specific Post Offices or postal zones in larger cities. Make it a ZIP+4 Code, introduced in 1983, and mail can be sorted to specific streets, buildings, houses and businesses. Today, ZIP Codes are important parts of the nation's 911 emergency system. ZIP = Zone or Zoning Improvement Plan.



12
BILLION
miles traveled

Fact #305 | Updated: February 28, 2022

Stellar performance! During 2021, Postal Service employees traveled 1.2 billion miles to deliver your mail, equivalent to 48,191 laps around Earth, 5,023 trips to the moon or 13 trips to the sun. *Based on the average moon and sun distance.

USPS
Operation Santa

Fact #284 | Updated: March 10, 2022

For 109 years, postal employees and the American public have helped bring more magic to the holiday season, one letter to Santa at a time.



In 2021, 4.3 million people visited *USPSOperationSanta.com* (<https://www.USPSOperationSanta.com>), more than 203,000 profiles were created, and the identity verification success rate was 93.5 percent.

Generous customers adopted 21,175 letters and shipped 21,443 packages, helping families and children experience the magic of the season when they might not have otherwise, one letter to Santa at a time.

In 2020, the program expanded nationwide for the first time. More than 1 million people visited USPSOperationSanta.com. Generous customers shipped more than 21,000 packages to the families and children who wrote to Santa to help them have a happier holiday.

In 2019, the digital program continued to expand. Letters were accepted letters from 17 locations, and the letters could be adopted by anyone in the country. Gifts could be shipped from more than 19,000 post offices.

In 2018, the Postal Service expanded the 2017 pilot test to include 6 additional cities (Austin, Indianapolis, Philadelphia, Phoenix, San Diego, Washington DC – and Puerto Rico and Chico, CA (site of wildfires). Letters from those locations populated the website and people in those locations only could adopt them and ship from one dedicated post office per city.

In 2017, the Postal Service launched a pilot test of a digital Operation Santa option for residents of New York City. People living in New York City, within proximity of the James A. Farley building could adopt letters online and ship gifts from JAF. Puerto Rico was also added after the hurricanes that year.

HISTORY

In 1912, Postmaster General Frank Hitchcock authorized local postmasters to allow postal employees and citizens to respond to letters addressed to Santa Claus and the program came to be known as *Operation Santa*.

In the 1940s, mail volume increased to the point where the Post Office Department invited charitable organizations and corporations to participate for philanthropic purposes —providing written responses and small gifts.

Through the years, the program has taken on a life of its own and today cities around the country have established successful programs with recognized charitable organizations, major corporations, local businesses and postal employees making a major difference in the lives of the children from coast to coast.



46,395 deliveries

Fact #279 | Updated: February 28, 2022

The ZIP Code with the most street deliveries is Cathedral Station, NY, 10025, with 46,395!

2.3 MILE delivery route

Fact #151 | Updated: February 28, 2022

The shortest rural delivery route is in Parker, CO. The carrier travels 2.3 miles and delivers to 869 boxes.

181.4 MILE delivery route

Fact #150 | Updated: February 28, 2022

The longest rural delivery route is in Clarinda, IA. The carrier travels 181.4 miles daily and delivers to 234 boxes.

DELIVERY dock-to-dock

Fact #146 | Updated: March 4, 2021

Dock-to-dock delivery on the Magnolia River in Alabama. A 15-foot contract mail boat delivers to 176 dock-side mailboxes on a 31-mile stretch of the river.

2ND OLDEST Post Office

Fact #141 | Updated: March 4, 2021

The second oldest Post Office location is in Castine, ME, from 1833.

OLDEST Post Office

Fact #140 | Updated: March 4, 2021

The Hinsdale, NH, Post Office (03451) has been located in the same building since 1816.

LARGEST retail space

Fact #139 | Updated: March 7, 2022

The largest U.S. Postal Service retail space is the James A. Farley Post Office in New York, NY (10001), at 33,100 square feet.

SMALLEST POST OFFICE

Fact #138 | Updated: March 4, 2021

The smallest Post Office is located in Ochopee, FL (34141) and is 61.3 square feet. The building used to be a storage facility for irrigation pipes of an adjacent tomato farm. It was converted into a Post Office in 1953, after a fire that destroyed a previous Post Office and general store.

There is a sign beside the office that reads:

OCHOPEE POST OFFICE

Considered to be the smallest post office in the United States, this building was formerly an irrigation pipe shed belonging to the J.T. Gaunt Company tomato farm. It was hurriedly pressed into service by postmaster Sidney Brown after a disastrous night fire in 1953 burned Ochopee's general store and post office. The present structure has been in continuous use ever since – as both a post office and ticket station for Trailway's bus lines – and still services residents in a three-county area,

including deliveries to Seminole and Miccosukee Indians living in the region. Daily business often includes requests from tourists and stamp collectors the world over for the famed Ochopee postmark. The property was acquired by the Wooten Family in 1992.

— Collier County Board of County Commissioners



HIGHEST U.S. Post Office

Fact #125 | Updated: March 4, 2021

The highest Post Office in the United States is located in Alma, CO (80420), at 10,578 feet above sea level.

\$165.3
million

Fact #69 | Updated: March 7, 2022

Each day, \$165.3 million is paid to USPS employees in salaries and benefits.

425.3
million
mailpieces

Fact #49 | Updated: March 9, 2022

The Postal Service processes and delivers 425.3 million mail pieces each day.

**SELF
FUNDING**

Fact #59 | Updated: March 1, 2022

The Postal Service generally receives no tax dollars for operating expenses and relies on the sale of postage, products and services to fund its operations.

\$254.2
million

Fact #47 | Updated: March 7, 2022

The Postal Service generates, on average, \$254.2 million in revenue per day

Fun facts

The lighter side of the business

Really? You didn't know this? Impress people with your knowledge of some fun, interesting facts.

COMPANION PDF – 2022 ([HTTPS://FACTS.USPS.COM/WP-CONTENT/UPLOADS/FUN-FACTS.PDF](https://facts.usps.com/wp-content/uploads/fun-facts.pdf))

1993

**National Postal
Museum Opens**

Fact #740 | Updated: February 25, 2022

In 1993, the Smithsonian's National Postal Museum opened. This museum is dedicated to the preservation, study and presentation of postal history and philately.

The Smithsonian's National Postal Museum offers exhibits tracing the history of the postal system in the United States. It houses nearly six million postal-related items — mostly stamps, but also postal stationery, greeting cards, covers and letters, mailboxes, postal vehicles, handstamps, metering machines, patent models, uniforms, badges, and other objects related to postal history and philately. The museum's library, with more than 40,000 volumes and manuscripts, is open to the public by appointment. In 2013, the William H. Gross Stamp Gallery — the largest in the world — opened at the museum.

**BOLGER
center**

Fact #817 | Updated: February 25, 2022

Located in Maryland, the Bolger Center is a premier leadership development and conference center servicing both Postal Service and external clients. It is the only hotel in the country featuring an on-site Smithsonian Institution exhibit.

The Bolger Center is a Postal Service-owned state of the art training facility located on 83 beautiful acres in Potomac, Maryland. It was built in the 1930's as a Catholic convent by the Sisters of Mercy.

In the 1980's, it was purchased by the U.S. Postal Service as a training center.

Named for William F. Bolger (March 13, 1923 – August 21, 1989), the 65th Postmaster General of the United States from March 15, 1978 to January 1, 1985.





1863 free city delivery

Fact #779 | Updated: February 25, 2022

An Act of Congress of March 3, 1863, effective July 1, 1863, provided that free city delivery be established at Post Offices where income from local postage was more than sufficient to pay all expenses of the service. For the first time, Americans had to put street addresses on their letters.

In the late 19th century, free home delivery of mail was introduced — first in cities, then in rural areas — and letter carriers became familiar, trusted visitors to homes and businesses across the country.

Before 1863, postage paid only for the delivery of mail from Post Office to Post Office. Citizens picked up their mail, although in some cities they could pay an extra one- or two-cent fee for letter delivery or use private delivery firms. Among the postal reforms suggested by Postmaster General Montgomery Blair in his 1862 report to the President was free delivery of mail by salaried letter carriers, which he felt would “greatly accelerate deliveries, and promote the public convenience.” He reasoned that if the system of mailing and receiving letters was more convenient, people would use it more often, and pointed to increasing postal revenues in England, which already had adopted free city delivery.

Congress agreed. An Act of Congress of March 3, 1863, effective July 1, 1863, provided that free city delivery be established at Post Offices where income from local postage was more than sufficient to pay all expenses of the service. For the first time, Americans had to put street addresses on their letters.



POSTMASTER LINCOLN

Fact #774 | Updated: February 25, 2022

On May 7, 1833, 24-year-old Abraham Lincoln was appointed Postmaster of New Salem, Illinois. Lincoln served until the office was closed May 30, 1836.

Two postmasters became U.S. Presidents later in their careers — Abraham Lincoln and Harry Truman. Truman held the title and signed papers but immediately turned the position and its pay over to an assistant. Lincoln was the only President who served as a Postmaster.

On May 7, 1833, 24-year-old Lincoln was appointed Postmaster of New Salem, Illinois. Lincoln served until the office was closed May 30, 1836. Postal records show that Lincoln earned \$55.70 as Postmaster in fiscal year 1835 and \$19.48 for one quarter's work in fiscal year 1837. Besides his pay, Lincoln, as Postmaster, could send and receive personal letters free and get one daily newspaper delivered free. Mail arrived once a week. If an addressee did not collect the mail, as was the custom, Lincoln delivered it personally — usually carrying the mail in his hat. Even then, Lincoln was “Honest Abe.”

Reportedly, when the New Salem Post Office was discontinued, Lincoln had a balance of \$16 or \$18, which he took with him to Springfield, Illinois. Months later, while his close friend Dr. A. G. Henry was visiting, a

Post Office agent called on Lincoln to collect the funds. Henry knew that Lincoln had been in financial straits and feared that he might not have the money. Henry recalled that just as he was about to offer Lincoln a loan, the future President:

“ . . . went over to his trunk at his boarding house, and returned with an old blue sock with a quantity of silver and copper coin tied up in it. Untying the sock, he poured the contents on the table and proceeded to count the coin, which consisted of such silver and copper pieces as the country-people were then in the habit of using in paying postage. On counting it up there was found the exact amount, to a cent, of the draft, and in the identical coin which had been received. He never used, under any circumstances, trust funds.”



MR. ZIP

Fact #754 | Updated: February 25, 2022

Mr. ZIP, who has no first name, appeared in many public service announcements and advertisements urging postal customers to use the five-digit ZIP Code that was initiated on July 1, 1963. Within four years of his appearance, eight out of ten Americans knew who Mr. ZIP was and what he stood for.



With the introduction of the nine-digit ZIP Code, or ZIP+4, in 1983, Mr. ZIP went into partial retirement. His image still was printed on the selvage of some sheets of stamps, but that practice ended in January 1986. Mr. ZIP still is used occasionally by the Postal Service.



1994 launched internet site

Fact #738 | Updated: March 1, 2022

The Postal Service launched its first public internet site in 1994.

1847 First Stamps

Fact #733 | Updated: April 1, 2021

1847 - U.S. postage stamps issued

The Post Office Department issued its first postage stamps on July 1, 1847. Previously, letters were taken to a Post Office, where the postmaster would note the postage in the upper right corner. The postage rate was based on the number of sheets in the letter and the distance it would travel. Postage could be paid in advance by the writer, collected from the addressee on delivery, or paid partially in advance and partially upon delivery.

On March 3, 1847, Congress authorized United States postage stamps. The first general issue postage stamps went on sale in New York City, July 1, 1847. One, priced at five cents, depicted Benjamin Franklin. The other, a ten-cent stamp, pictured George Washington. Clerks used scissors to cut the stamps from pregummed, nonperforated sheets. Only Franklin and Washington appeared on stamps until 1856, when a five-cent stamp honoring Thomas Jefferson was issued. A two-cent Andrew Jackson stamp was added in 1863. George Washington has appeared on more U.S. postage stamps than any other person.



1775 First PMG

Fact #732 | Updated: April 1, 2021

1775 - Benjamin Franklin appointed first Postmaster General by the Continental Congress

FIRST
female PMG
Fact #704 | Updated: March 9, 2021

The first female Postmaster General was Megan J. Brennan, Washington, DC, 2015.



FIRST
African
American on
stamp
Fact #702 | Updated: March 9, 2021

The first African American on a stamp was Booker T. Washington, 1940.



FIRST Native American on a stamp

Fact #700 | Updated: March 9, 2021

The first Native American on a stamp was Pocahontas, 1907.



FIRST Hispanic American on a stamp

Fact #699 | Updated: March 9, 2021

The first Hispanic American on a stamp was Adm. David Farragut, 1903.



FIRST African American Inspector

Fact #697 | Updated: March 9, 2021

The first known African American postal inspector was Isaac Myers, Baltimore, MD, 1870.



Isaac Myers served from 1870 until 1879. During his employment he helped solve a number of notorious cases.

1ST AMERICAN woman on a stamp

Fact #696 | Updated: March 9, 2021

The first American woman on a U.S. postage stamp was Martha Washington, 1902.

FIRST African American Carrier

Fact #695 | Updated: March 9, 2021

The first known African American mail carrier was James B. Christian, Richmond, VA, 1869.

FIRST KNOWN African American Postmaster

Fact #692 | Updated: March 9, 2021

The first known African American Postmaster was James W. Mason, Sunny Side, AR, 1867.

FIRST KNOWN female mail carrier

Fact #689 | Updated: March 9, 2021

The first known female mail carrier was Sarah Black, mail messenger, Charlestown, MD, 1845.

FIRST FEMALE postmaster

Fact #688 | Updated: March 9, 2021

The first known female Postmaster in the United Colonies was Mary Katherine Goddard, Baltimore, MD, 1775.

USPS An American History

Fact #687 | Updated: March 9, 2021

More information about the Postal Service can be found in The United States Postal Service: An American History at about.usps.com/who-we-are/postal-history/welcome.htm

1860 African American Postmasters

Fact #686 | Updated: March 9, 2021

African Americans worked as Postmasters, clerks and carriers beginning in the 1860s — 100 years before the Civil Rights era brought wider opportunity in the American workplace.

WOMEN postmasters

Fact #685 | Updated: March 9, 2021

Women served as Postmasters in this country more than a century before they won the right to vote.

1,400 murals and sculptures

Fact #678 | Updated: March 9, 2021

More than 1,400 murals and/or sculptures from President Roosevelt's New Deal Programs are in our Post Offices around the nation.

Five murals were featured on First-Class postage stamps in 2019

FLAGS at Post Offices

Fact #639 | Updated: February 28, 2022

Post Offices were first required to display the American flag in 1885 to comply with Treasury Department instructions. On Nov. 7, 2019, Post Offices were required to fly the Prisoner of War (POW)-Missing In Action (MIA) flag on the same days that the American flag is flown.

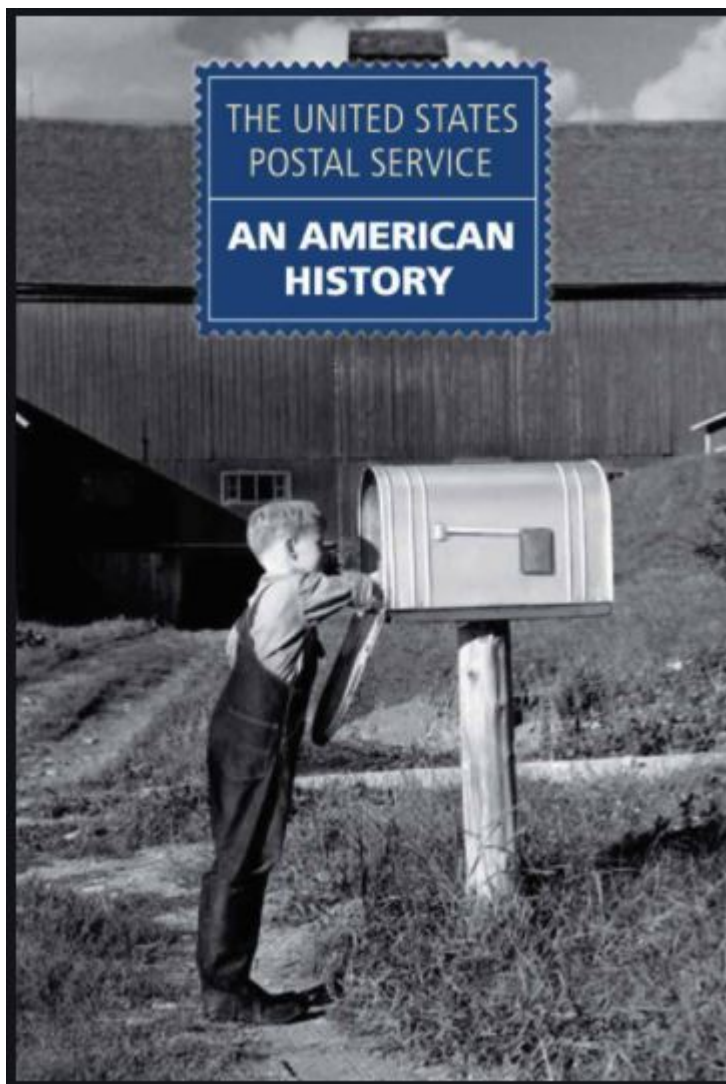
In 2021, the Postal Service replaced 31,874 American Flags and 27,550 POW/MIA Flags.

HISTORY of the USPS

Fact #638 | Updated: March 8, 2021

The history of the Postal Service is a large story set on a broad canvas. It is intertwined with the history of America, and it provides a lens from which to observe the evolution of the United States. This story is told beautifully in The United States Postal Service: An American History (also known as Pub. 100).

You can find the publication at about.usps.com/who-we-are/postal-history/welcome.htm (<http://www.about.usps.com/who-we-are/postal-history/welcome.htm>)



POSTAL BULLETIN

Fact #637 | Updated: February 28, 2022

On time. Every time. The Postal Bulletin, a nationally distributed biweekly publication, serves as a source for official policy, procedure updates and departmental news for all USPS functions. It has never missed a deadline since its inception in 1880.

Go to <https://about.usps.com/resources/postal-bulletin.htm> (<https://about.usps.com/resources/postal-bulletin.htm>) to browse past issues.

PB 22592, February 24, 2022

postal|bulletin

PUBLISHED SINCE MARCH 4, 1880

PROTECT YOURSELF

FROM WORK-FROM-HOME SCAMS



See page 3



© 2022, UNITED STATES POSTAL SERVICE. ALL RIGHTS RESERVED.

167.3

million pieces

Fact #523 | Updated: February 28, 2022

On average, the Postal Service processes and delivers 167.3 million pieces of First-Class Mail each day.

1,400

historic buildings

Fact #345 | Updated: March 5, 2021

More than 1,400 postal-owned buildings are listed on the National Register of Historic Places.

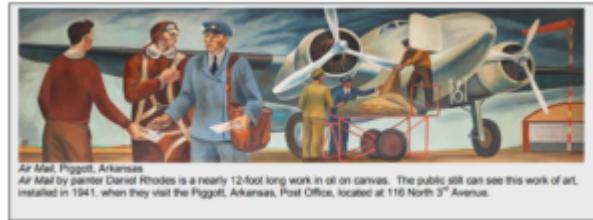
Our History is the History of America

They are treasures. But they're not hidden. Many of our buildings are historical properties. Inside -and outside – many of our Post Offices, you'll find impressive works of art that reflect the stories of our people and our nation.

- More than 1,400 postal-owned buildings are listed on the National Register of Historic Places. More information can be found at [gov/nr/research/](http://www.nps.gov/nr/research/) (<http://www.nps.gov/nr/research/>)
- More than 1,400 murals and/or sculptures from President Roosevelt's New Deal Programs are in our Post Offices around the

nation.

- Five murals were featured on First-Class postage stamps in 2019
- *The United States Postal Service: An American History* is an entire publication dedicated to our history and can be found at usps.com/who-we-are/postal-history/welcome.htm.



USPS Operation Santa

Fact #284 | Updated: March 10, 2022

For 109 years, postal employees and the American public have helped bring more magic to the holiday season, one letter to Santa at a time.



In 2021, 4.3 million people visited [USPSOperationSanta.com](https://www.USPSOperationSanta.com) (<https://www.USPSOperationSanta.com>), more than 203,000 profiles were created, and the identity verification success rate was 93.5 percent. Generous customers adopted 21,175 letters and shipped 21,443 packages, helping families and children experience the magic of the season when they might not have otherwise, one letter to Santa at a time.

In 2020, the program expanded nationwide for the first time. More than 1 million people visited [USPSOperationSanta.com](https://www.USPSOperationSanta.com). Generous customers shipped more than 21,000 packages to the families and children who wrote to Santa to help them have a happier holiday.

In 2019, the digital program continued to expand. Letters were accepted from 17 locations, and the letters could be adopted by anyone in the country. Gifts could be shipped from more than 19,000 post offices.

In 2018, the Postal Service expanded the 2017 pilot test to include 6 additional cities (Austin, Indianapolis, Philadelphia, Phoenix, San Diego, Washington DC – and Puerto Rico and Chico, CA (site of wildfires). Letters from those locations populated the website and people in those locations only could adopt them and ship from one dedicated post office per city.

In 2017, the Postal Service launched a pilot test of a digital Operation Santa option for residents of New York City. People living in New York City, within proximity of the James A. Farley building could adopt letters

online and ship gifts from JAF. Puerto Rico was also added after the hurricanes that year.

HISTORY

In 1912, Postmaster General Frank Hitchcock authorized local postmasters to allow postal employees and citizens to respond to letters addressed to Santa Claus and the program came to be known as *Operation Santa*.

In the 1940s, mail volume increased to the point where the Post Office Department invited charitable organizations and corporations to participate for philanthropic purposes —providing written responses and small gifts.

Through the years, the program has taken on a life of its own and today cities around the country have established successful programs with recognized charitable organizations, major corporations, local businesses and postal employees making a major difference in the lives of the children from coast to coast.



Innovation in the mail

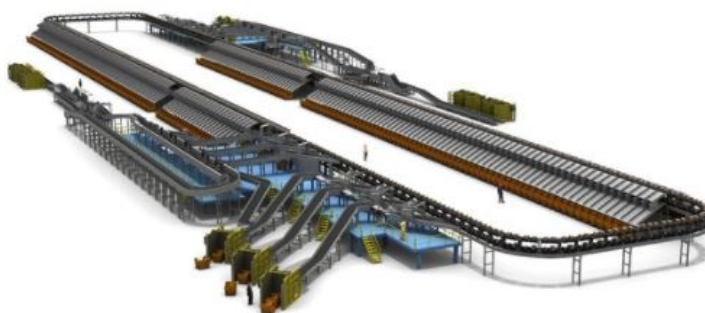
The Postal Service is always striving to increase the impact, excitement and value of mail. We've always embraced new technologies and innovation. We're firmly focused on improving the mailing experience.

People, machines, vehicles, technology — it's an impressive feat to get that card from grandma or that package from your favorite online store to your doorstep.

EPPS 25,000 packages/hour

Fact #831 | Updated: February 25, 2022

The Enhanced Package Processing System (EPPS), sorts 25,000 packages per hour.



AUTOMATED delivery unit sorter

Fact #824 | Updated: March 1, 2022

The Automated Delivery Unit Sorter (ADUS) automates the sorting of smaller packages - up to 30 pounds - at a rate of 3,400 pieces per hour with a sort accuracy of 99.95 percent.



LABEL BROKER

Fact #725 | Updated: March 7, 2022

Label Broker. This service is easy! It solves the ever-increasing problem of customers conducting business online and not being able to print shipping labels. With Label Broker, customers can get a shipping label on their mobile device, in the form of a QR code, directly from the merchant.

The customer uses the code to print a label at a Post Office or on a printer connected to *usps.com*. Label Broker is also the foundational technology that has enabled USPS Operation Santa to expand and evolve in a digital format.

For more information, go to www.usps.com/business/label-broker.htm
(<http://www.usps.com/business/label-broker.htm>)



**2.07
BILLION**
miles driven in
2021

Fact #701 | Updated: March 7, 2022

To move mail using surface transportation, the Postal Service drove more than 2.07 billion miles in 2021 — more than 45,000 trips in more than 25,000 box trucks and tractor-trailers daily.

The Postal Service operates hundreds of mail processing and distribution centers / plants across the country. The employees in these facilities accept, sort and dispatch the nations mail.

- To move mail through the air, the Postal Service flies **5 million** pounds of mail per day, using more than 140 domestic airports.

5 BILLION
external email
messages

Fact #698 | Updated: March 7, 2022

In 2021, the Postal Service email gateway system delivered more than 5 billion external email messages annually to postal customers and business partners. The majority of these were automated messages from Informed Delivery, Click-N-Ship and Package Tracking applications.

- There are **622** remote locations within the postal system that receive network connectivity via satellite.
- The Postal Service communications network contains more than **190,000** provisioned subnets that connect more than **1 million** devices, including:
 - **140,000** desktop computers
 - **50,000** notebook computers
 - **41,000** server computers
 - **56,080** printers
 - **32,087** smartphones
 - **3,735** tablets
 - **2,700** MacOS desktop and notebook computers
 - **125,630** phone lines

- **443,701** hand-held scanners.

**38
MILLION**
emails blocked
monthly

Fact #694 | Updated: March 7, 2022

More than 38 million emails received from external senders were blocked monthly in 2021 to ensure the safety of the Postal network.

- With one of the largest corporate email systems, the Postal Service handled more than **3 million** legitimate emails a day in 2021, delivered to more than **212,000** email accounts. But some emails are blocked due to:
 - Spam: More than **6 million** spam email messages were blocked monthly.
 - Content: More than **27 million** emails were blocked monthly due to malicious content including phishing, brand spoofing, and suspicious URLs being detected.
 - Malware: More than **9,000** email messages were blocked monthly due to malware.
 - Blocking bad actors: More than **5 million** email messages were blocked monthly due to sender reputation.
 - Advanced Threat Detection: More than **16,000** email messages were blocked by domain impersonation, URL and file detonation detecting malicious content, or click-time URL protection.

92.5
petabytes of
storage

Fact #690 | Updated: March 7, 2022

The Postal Service has 92.5 petabytes of storage capacity — equivalent to playing more than 234,177 years of songs on an MP3 player, with no repeats.

DATA
driven

Fact #654 | Updated: March 7, 2022

The Postal Service uses data not only to ensure its operations run smoothly, but also to help businesses make better use of the mail. Its mission is to provide the right information to the right people in real time using advanced technology.

TECHNOLOGY
enabled

Fact #653 | Updated: March 7, 2022

The Postal Service uses a vast network of people and advanced technologies to collect, process, transport and accurately deliver the nation's mail in an increasingly digital world.

PATENTLY
the best

Fact #647 | Updated: February 28, 2022

Patently the best. The United States Patent and Trademark Office has issued more than 500 patents to the United States Postal Service.

**385
DOMESTIC**
trademarks

Fact #646 | Updated: February 28, 2022

Leaving a mark! The Postal Service has 385 domestic and 1,000 foreign trademark registrations.

MASTER
of our domains

Fact #645 | Updated: February 28, 2022

The Postal Service owns 1,884 internet domains

8 BILLION

Seamless mail pieces

Fact #545 | Updated: March 7, 2022

The Seamless Acceptance program automates the payment verification of commercial mailings by leveraging electronic documentation (eDoc), Intelligent Mail barcodes and information collected from both handheld sampling devices and mail processing equipment scans. In FY21, the Postal Service handled 8 billion mail pieces from 1,873 mailers under Seamless Acceptance and collected \$2.6 million in postage.

1,078

eInduction mailers

Fact #544 | Updated: March 7, 2022

The eInduction process simplifies mail induction by leveraging eDoc, Intelligent Mail container barcodes and handheld scanner technologies to verify the payment and preparation of commercial mail containers. In FY21, 1,078 mailers took advantage of eInduction.

\$27 BILLION

EPS revenue

Fact #543 | Updated: March 7, 2022

The Enterprise Payment System (EPS) allows customers to pay for and manage their use of Postal Service products and services online, using an integrated single payment account. In FY21, EPS collected \$27.6 billion in revenue, which is a 28 percent increase over FY20.

\$14 BILLION

eVS revenue

Fact #541 | Updated: March 7, 2022

The Electronic Verification System (eVS) allows high-volume package mailers and package consolidators to document and pay for postage, including extra service fees, using electronic manifest files. In FY21, eVS processed 4.7 billion packages from 4,084 customers and collected \$14.7 billion in revenue, representing a 16 percent increase in revenue over FY20.

\$158 MILLION

in short-paid revenue

Fact #540 | Updated: March 7, 2022

The Automated Package Verification (APV) program automates the detection and collection of postage due for mail pieces with insufficient postage using automated package processing equipment. The APV program collected \$158.3 million in short-paid revenue and saved more than \$202.7 million from being short-paid postage in FY21.

ADDRESS

deciphering

Fact #538 | Updated: March 7, 2022

You call that scribble legible? Employees at the Remote Encoding Center in Salt Lake City, UT, are responsible for deciphering terribly handwritten or shoddily printed addresses.

STAMP

printing technology

Fact #512 | Updated: March 7, 2022

In 2021, the Postal Service released several stamps that highlighted stamp printing technologies.

- The Lunar New Year – Year of the Ox stamp, part of the new Celebrating Lunar New Year stamp series, had intricate gold and orange foil in the stamp artwork, as well as in the stamp's selvage.
- The Star Wars Droids stamps, 10 designs in various sizes, included a varnish, high gloss coating on the Droids.
- The Sun Science stamps (10 designs) were printed with a foil treatment that adds a glimmer to the stamps.
- The Raven Story stamp inspired by the traditional story of the raven setting the sun, moon and stars free includes gold foil.
- The Message Monsters stamps (five designs) came complete with their own accessories. The selvage contained cartoony voice balloons and thought bubbles with exclamations and salutations,

hats and crowns, hearts, stars, crazy daisies, and other fun flair making a fun addition to any piece of First-Class Mail.

SYSTEMS At Work

Fact #396 | Updated: March 7, 2022

The daily operations performed by the Postal Service depend on an astonishing network of people and technologies that collect, transport, process and deliver the nation's mail.

Innovative Technologies — Systems at Work

The daily operations performed by the Postal Service depend on an astonishing network of people and technologies that collect, transport, process and deliver the nation's mail.

- The Postal Service operates hundreds of mail processing and distribution centers / plants across the country. The employees in these facilities accept, sort and dispatch the nation's mail.
- To move mail using surface transportation, the Postal Service drove more than 2.07 billion miles in 2021 — more than **45,000** trips in more than **25,000** box trucks and tractor-trailers daily.
- To move mail through the air, the Postal Service flies **5 million** pounds of mail per day, using more than 140 domestic airports.
- The Music City Annex in Nashville, TN, built in 2019, is the newest mail processing facility.
- The Los Angeles CA Processing and Distribution center is the largest processing facility at 725 million square feet.
- The Postal Service deployed four electric yard tractors at the Richmond, CA, processing center in 2019. These tractors are used to move trailers around postal property.
- The Postal Service is the world leader in optical character recognition (OCR) technology, with machines reading nearly 98 percent of all hand-addressed letters and 99.5 percent of machine-printed mail.
- The Postal Service has deployed **378** automated guided vehicles (AGVs) in 27 facilities. AGVs use sensors and navigation technology to move around processing facilities without human involvement.
- The Postal Service has one of the largest material-handling systems in the world for moving mail. There are more than 200 miles of conveyors within postal facilities.
- The Postal Service has the largest gantry robotic fleet in the world using **165** robotics systems to move **300,000** mail trays per day.

The Postal Service operates more than **8,500** pieces of automated equipment that processes and sorts nearly half the world's mail.

- The largest piece of automated equipment, the **Enhanced Package Processing System (EPPS)**, sorts packages at **25,000** pieces per hour

- The **Flex Rover Sorter** (FRS) is a wheeled robot that sorts large and non-machinable packages into containers. There are more than **600** rovers deployed at 40 sites across the country.
- The **Single Induction Package Sorter** (SIPS) is the newest piece of automated equipment (tied with the FRS). It can sort packages at a rate of **2,500** pieces per hour and there are 51 new machines across the country.
- The **Automated Delivery Unit Sorter** (ADUS) sorts packages and bundles of mail at a rate of **3,400** pieces per hour with a sort accuracy of 99.95 percent
- The **Robotic Containerization System** (RCS) sorts trays and automatically loads rolling containers or pallets
- The **Advanced Facer Cancellor System** (AFCS) positions letter mail and postmarks stamps at **36,000** pieces per hour
- The **Delivery Barcode Sorter** (DBCS) reads the barcodes and sorts letters at **36,000** pieces per hour
- The **Automated Flat Sorting Machine** (AFSM) sorts flat mail at **17,000** pieces per hour
- The **Automated Package Processing System** (APPS) sorts packages and bundles of mail at **9,500** pieces per hour
- The **High Throughput Parcel Sorter** (HTPS) sorts packages and bundles at **15,000** pieces per hour
- The **Automated Parcel and Bundle Sorter** (ABPS) sorts packages and bundles of mail at **6,000** pieces per hour
- **Tray sorting machines** sort more than **10 million** trays per day through conveyor systems
- **Mobile Delivery Devices** (MDDs) provide real-time scanning for daily delivery operations. There are more than **260,000** MDDs in use nationwide.
- Check out the **Systems at Work** (<https://www.youtube.com/watch?v=WX16-52bHvg>) video for more information.
(<https://www.youtube.com/watch?v=WX16-52bHvg>)

18
million trays

Fact #394 | Updated: March 4, 2021

Tray sorting machines sort more than 18 million trays per day through conveyor systems.

8,500
PIECES
of processing
equipment

Fact #384 | Updated: March 7, 2022

The Postal Service operates more than 8,500 pieces of automated equipment that processes and sorts nearly half the world's mail.

260,000
Mobile Delivery
Devices

Fact #374 | Updated: March 7, 2022

Mobile Delivery Devices (MDDs) provide real-time scanning for daily delivery operations. There are more than 260,000 MDDs in use nationwide.

44,151
point-of-sale
terminals

Fact #365 | Updated: March 7, 2022

The Postal Service maintains 44,151 point-of-sale terminals, 2,706 self-service retail kiosks, 6,608 mobile point-of-sale handheld devices, and 1,431 business partner retail locations nationwide.

OUTER SPACE

postage stamp

Fact #332 | Updated: March 5, 2021

Out of this world! A postage stamp was inside the New Horizons spacecraft that made a flyby of Pluto in July 2015. That's the farthest distance traveled by a postage stamp - more than 3 billion miles. So noted by the Guinness World Records.

CONNECTING

USPS and mailers

Fact #324 | Updated: March 8, 2021

Postal Customer Councils (PCCs). These Postal Service-affiliated networks connect business mailers with local Post Office leadership to develop more effective and profitable mailings through training and information sharing. Since the 1960s, PCCs have been the go-to local resource for helping mailers learn, innovate and build their business. More information can be found at postalpro.usps.com/pcc.

Find more information at postalpro.usps.com/pcc (<http://postalpro.usps.com/pcc>).

MAILERS

providing technical advice

Fact #323 | Updated: March 8, 2021

Postmaster General's Mailers Technical Advisory Committee (MTAC). Representing select mailing associations, this group works to enhance the value of mail by providing technical advice and recommendations to the Postal Service. More information can be found at postalpro.usps.com/mtac.

36,000

stamps postmarked per hour

Fact #314 | Updated: March 8, 2021

The Advanced Facer Cancellor System positions letter mail and postmarks stamps at 36,000 pieces per hour.

The daily operations performed by the Postal Service depend on an astonishing network of people and technologies that collect, transport, process and deliver the nation's mail.

200

miles of conveyors

Fact #313 | Updated: March 8, 2021

The Postal Service is one of the largest material-handling systems in the world for moving mail. There are more than 200 miles of conveyors within postal facilities.

OPTICAL

character recognition

Fact #312 | Updated: March 8, 2021

The Postal Service is the world leader in optical character recognition technology, with machines reading nearly 98 percent of all hand-addressed letters and 99.5 percent of machine-printed mail.

TRACKING

Intelligent Mail

Fact #292 | Updated: March 8, 2021

A unique Intelligent Mail barcode identifies individual pieces of mail, trays, sacks and containers to track them through the postal processing system from induction to delivery.

EDDM

nearly \$4B in revenue

Fact #291 | Updated: March 7, 2022

Every Door Direct Mail - EDDM - is an online service that uses demographic data to help business mailers target their marketing mail pieces to customers in a select neighborhood, city or ZIP Code. Since 2011, EDDM has resulted in more than 26 billion pieces of mail and \$3.8 billion in revenue.

The USPS Printer Directory provides customers free access to local print, design and mail preparation services for Every Door Direct Mail and other direct mail products through a searchable database and mapping

**44
MILLION**
Informed
Delivery
Customers

Fact #203 | Updated: March 7, 2022

program. More than 700 listings populate the directory that serves small and medium-size businesses nationwide.

With Informed Delivery service, you can digitally preview your incoming mail and manage your packages from a computer, tablet or mobile device. More than 44 million customers have enrolled since it was launched in 2017.

Informed Delivery provides eligible residential customers with a digital preview of their household's incoming mail scheduled to arrive soon. Users can view greyscale images of the exterior, address side of incoming letter-sized mail pieces (not the inside contents) via email or an online dashboard.

Informed Delivery also allows customers to track packages delivered by the Postal Service and see when they will be delivered.

For more information and to sign up, go to usps.com/informedelivery (<http://usps.com/informedelivery>).



443,701
handheld
scanners

Fact #38 | Updated: March 7, 2022

Our communications network supports and maintains more than 140,000 desktop computers, 50,000 notebook computers, 56,080 printers, 32,087 smartphones, 125,630 phone lines and 443,701 handheld scanners.

The Postal Service has one of the world's largest computer networks — linking more than 31,000 facilities and connecting hundreds of thousands of employees and hundreds of systems.

There are 622 remote locations within the postal system that receive network connectivity via satellite.

USPS has 92.5 petabytes of storage capacity — equivalent to playing more than 234,177 years of songs with no repeats.

More than 169,623 meetings per month are hosted online, representing more than 62.2 million minutes of conference time.

165
robotics systems
Fact #36 | Updated: March 7, 2022

The Postal Service has the largest gantry robotic fleet in the world using 165 robotics systems to move 300,000 mail trays per day.

Security.

Law Enforcement. Preserving the Trust.

We protect you and your mail.

The U.S. Postal Inspection Service is the federal law enforcement, crime prevention, and security arm of the U.S. Postal Service. Founded by Benjamin Franklin and established on August 7, 1775, the Inspection Service is one of the nation's oldest federal law enforcement agencies.

POSTAL INSPECTION SERVICE

Fact #815 | Updated: February 25, 2022

Enforcing the law. Established Aug. 7, 1775. The U.S. Postal Inspection Service enforces federal laws, prevents crimes and keeps customers, employees and the mail safe.

It's one of the oldest law enforcement agencies in the nation. Postal Inspectors remain on the heels of the criminals — targeting theft, disrupting drug traffickers, warning about fraud scams and more.

The Inspection Service does this with approximately 2,400 employees — including nearly 1,300 Postal Inspectors, roughly 500 uniformed Postal Police Offices and 600 professional, technical and administrative support personnel — all working to ensure America's confidence in the U.S. Mail.

FIRST African American Inspector

Fact #697 | Updated: March 9, 2021

The first known African American postal inspector was Isaac Myers, Baltimore, MD, 1870.



Isaac Myers served from 1870 until 1879. During his employment he helped solve a number of notorious cases.

14 KILOS of fentanyl seized

Fact #684 | Updated: March 7, 2022

In 2021, Postal Inspectors seized more than 14 kilograms of fentanyl and fentanyl analogues. Inspectors also uncovered more than 80 packages containing synthetic opioids.

The Postal Inspection Service is turning the tide against opioid dealers on the dark web. Detecting and stopping their shipments is only the beginning; tracing illegal drugs back to their source and shutting them down is the ultimate mission.

In August 2021, a Postal Inspection Service investigation culminated in a 15-year prison sentence for a notorious dark web drug trafficker. Chukwuemeka Okparaeké, aka “Fentmaster,” was responsible for at least 7,000 transactions in synthetic opioids. At least one of these shipments resulted in the overdose and death of an 18-year-old victim. Following Okparaeké’s arrest, Postal Inspectors seized more than 14 kilograms of fentanyl and fentanyl analogues. Inspectors also uncovered more than 80 packages containing synthetic opioids that would have been shipped throughout the United States had Okparaeké not been arrested.

2,113
synthetic opioid
seizures

Fact #682 | Updated: March 7, 2022

The Inspection Service is committed to using the most advanced technology to stop fentanyl traffickers. Postal Inspectors use data, forensics and citizens’ tips to protect Americans and apprehend opioid dealers who send illegal drugs through the mail. In fiscal years 2017-2021, the USPIS had 2,113 synthetic opioid seizures, totaling 2,039 pounds.

In 2021 alone, 790 synthetic opioid seizures resulted in 985 pounds of drugs off the street.

1,856
security sweeps

Fact #679 | Updated: March 7, 2022

During the 2020 elections — with increased use of the U.S. Mail during the coronavirus pandemic — Postal Inspection Service personnel were in postal facilities throughout the country, ensuring that Election Mail was physically secure.

From late October 2020 to mid-November (the first months of fiscal year 2021), the Inspection Service conducted 1,856 security sweeps at facilities in all 50 states, including all 220 facilities that processed ballots, logging more than 11,567 hours dedicated to protecting the integrity of Election Mail.

2,323
arrests

Fact #674 | Updated: February 28, 2022

In 2021, the Inspection Service reports 2,323 arrests for illegal narcotics-related cases.

OPERATION
Protect Veterans

Fact #330 | Updated: March 8, 2021

Postal Inspectors, in partnership with AARP, promoted Operation Protect Veterans to raise awareness of scams that target military veterans. In 2020, a Postal Inspector testified before the Senate Special Committee about Operation Protect Veterans. Also, the Inspection Service launched a special web page dedicated to Operation Protect Veterans at <https://www.uspis.gov/veterans>.

2,337
assets seized

Fact #329 | Updated: March 8, 2021

The Inspection Service seized 2,337 assets worth \$83 million. 89 percent of assets seized were from illegal narcotics and related proceeds.

1971
first female
agents hired

Fact #327 | Updated: March 8, 2021

In 1971, the Postal Inspection Service became one of the first federal law enforcement organizations to hire female agents.

The U.S. Postal Inspection Service enforces federal laws, prevents crimes and keeps customers, employees and the mail safe. It’s one of the oldest law enforcement agencies in the nation. These days our Inspectors

remain on the heels of the criminals — targeting theft, disrupting drug traffickers, warning about fraud scams and more.

The Inspection Service does this with approximately 2,400 employees, including nearly 1,300 Postal Inspectors, roughly 500 uniformed Postal Police Officers and 600 professional, technical and administrative support personnel ensuring America's confidence in the U.S. Mail.

262,000
items examined

Fact #326 | Updated: March 8, 2021

In 2020, forensic scientists and specialists at the Postal Inspection Service's state-of-the-art National Forensic Laboratory examined more than 262,000 physical evidence items. 1,444 suspects were identified.

**EMMY
AWARD**
winning TV
show

Fact #325 | Updated: March 8, 2021

The Inspection Service uses various media platforms to educate the American public about scams and how to avoid them. A weekly TV series, *The Inspectors*, was based on real-life Postal Inspection Service cases. 104 episodes of the Emmy Award-winning scripted drama ran for four seasons on network television, reaching more than 200 million viewers. Episodes are currently airing daily at 3:30 p.m. Eastern Time, in syndication on the BYU Network.

EDUCATION
for consumers

Fact #317 | Updated: March 8, 2021

National Consumer Protection Week. During the Federal Trade Commission's annual awareness campaign, the Postal Service and U.S. Postal Inspection Service provide customers with education, tools and information to combat identity theft and mail fraud. More information can be found at consumer.ftc.gov/features/national-consumer-protection-week.

SANCTITY
and Security of
the US Mail

Fact #301 | Updated: March 8, 2022

The Postal Inspection Service works aggressively and takes all practicable measures to ensure the sanctity and security of the U.S. Mail.

KEEPING AMERICA'S POSTAL SYSTEM SECURE

- ⊗ 5,141 arrests. 3,784 convictions. Primarily mail theft, mail fraud, and prohibited mailings.
- ⊗ \$1,053,180. Value of misappropriated or stolen mail transport equipment recovered.
- ⊗ 2,010 suspicious mail incidents investigated.
- ⊗ 2,323 arrests for illegal narcotics cases.
- ⊗ 584 reported threats and assaults against postal employees. 250 arrests. 165 convictions.
- ⊗ 2,347 assets seized worth over \$170 million. Of these seizures, over \$119 million has been or is in the process of being returned to crime victims.
- ⊗ Investigated the use of mail in the sexual exploitation of children. Seven investigations. Four arrests. Four convictions.
- ⊗ More than 242,000 physical evidence items examined by forensic scientists and specialists in the Postal Inspection Service's Forensic Laboratory Services. 1,912 suspects identified.

**DELIVERING
JUSTICE**

Fact #300 | Updated: March 8, 2022

The Inspection Service is committed to using the most advanced technology to stop fentanyl traffickers. Postal Inspectors use data, forensics, and citizens' tips to protect Americans and apprehend opioid dealers who send illegal drugs through the mail.

DELIVERING JUSTICE TO OPIOID DEALERS

The Inspection Service is committed to using the most advanced technology to stop fentanyl traffickers. Postal Inspectors use data, forensics, and citizens' tips to protect Americans and apprehend opioid dealers who send illegal drugs through the mail.

- 2,113 synthetic opioids seizures by the Inspection Service, fiscal years 2017–2021
- 2,039 pounds of synthetic opioids seized by the Inspection Service, fiscal years 2017–2021
- 790 synthetic opioid seizures totaling 985 pounds in fiscal year 2021

Since 2019, the Inspection Service has noted an 81 percent decrease in international fentanyl seizures and a 174 percent increase in domestic fentanyl seizures. There have been no fentanyl seizures directly from China since fall 2019. Furthermore, methamphetamine seizures by weight increased 50 percent in fiscal year 2021, with the vast majority originating along the Southwest border. Postal Inspectors conducted several large-scale interdictions focused specifically at the border, seizing over 60 pounds of fentanyl, 213 pounds of methamphetamine, and \$767,000 in illicit proceeds.

More information can be found at uspis.gov/the-opioid-epidemic

(<https://gcc02.safelinks.protection.outlook.com/?>

url=http%3A%2F%2Fwww.uspis.gov%2Fthe-opioid-

epidemic&data=04%7C01%7CCFisher%40uspis.gov%7C7ceac6746d43
4a3ff3d908d9b34a0fc1%7Cf9aa5788eb334a498ad076101910cac3%7C0
%7C0%7C637737953053572892%7CUnknown%7CTWFpbGZsb3d8eyJ
WljojMC4wLjAwMDAiLCJQljojV2luMzliLCJBTiI6Ikh1aWwiLCJXVCi6Mn0
%3D%7C3000&sdata=blm0mBVQ%2BGd%2FoVnFhG5No9p3mxK12Fel
KlptO4kYQ6I%3D&reserved=0)

2,010
suspicious mail
incidents

Fact #299 | Updated: March 7, 2022

Postal Inspectors responded to and investigated 2,010 suspicious mail incidents in 2021.

\$1.1M
equipment
recovered

Fact #298 | Updated: March 7, 2022

Postal Inspectors in 2021 recovered misappropriated or stolen mail transport equipment worth \$1.1 million.

200
federal laws
enforced

Fact #88 | Updated: March 1, 2022

Security. U.S. Mail is protected by more than 200 federal laws enforced by the Postal Inspection Service, one of the nation's oldest law enforcement agencies.

5,141
arrests

Fact #41 | Updated: March 7, 2022

In 2021 Postal Inspectors reported 5,141 arrests and 3,784 convictions related to postal crimes, primarily those involving mail theft, mail fraud and prohibited mailings.

Map facts

Discover fun and interesting geographic facts about the U.S. Postal Service!

USPS Headquarters

Fact #800 | Updated: February 25, 2022

The U.S. Postal Service Headquarters building is located in Southwest Washington, D.C., just a few blocks south of the National Mall.

Postal Service Headquarters, 1973–Present

Vlastimil Koubek designed the present Postal Service Headquarters building, which is located in Southwest Washington, D.C., just a few blocks south of the National Mall.



Post Office Department Headquarters, 1899–1934

This granite building on Pennsylvania Avenue, not far from the White House, was the last to simultaneously house both postal headquarters and the Washington, D.C., Post Office. Horse-drawn wagons brought mail to the building in its early years. By the time postal Headquarters moved to a larger building, almost all mail was carried by motor vehicles.



POSTMASTER LINCOLN

Fact #774 | Updated: February 25, 2022

On May 7, 1833, 24-year-old Abraham Lincoln was appointed Postmaster of New Salem, Illinois. Lincoln served until the office was closed May 30, 1836.

Two postmasters became U.S. Presidents later in their careers — Abraham Lincoln and Harry Truman. Truman held the title and signed papers but immediately turned the position and its pay over to an assistant. Lincoln was the only President who served as a Postmaster.

On May 7, 1833, 24-year-old Lincoln was appointed Postmaster of New Salem, Illinois. Lincoln served until the office was closed May 30, 1836. Postal records show that Lincoln earned \$55.70 as Postmaster in fiscal year 1835 and \$19.48 for one quarter's work in fiscal year 1837. Besides his pay, Lincoln, as Postmaster, could send and receive personal letters free and get one daily newspaper delivered free. Mail arrived once a week. If an addressee did not collect the mail, as was the custom, Lincoln delivered it personally — usually carrying the mail in his hat. Even then, Lincoln was “Honest Abe.”

Reportedly, when the New Salem Post Office was discontinued, Lincoln had a balance of \$16 or \$18, which he took with him to Springfield, Illinois. Months later, while his close friend Dr. A. G. Henry was visiting, a Post Office agent called on Lincoln to collect the funds. Henry knew that Lincoln had been in financial straits and feared that he might not have the money. Henry recalled that just as he was about to offer Lincoln a loan, the future President:

“ . . . went over to his trunk at his boarding house, and returned with an old blue sock with a quantity of silver and copper coin tied up in it. Untying the sock, he poured the contents on the table and proceeded to count the coin, which consisted of such silver and copper pieces as the country-people were then in the habit of using in paying postage. On counting it

up there was found the exact amount, to a cent, of the draft, and in the identical coin which had been received. He never used, under any circumstances, trust funds.”



SHIP mail delivery

Fact #772 | Updated: February 25, 2022

Ship Ahoy! The JW Westcott is a 45-foot contract mail boat out of Detroit that delivers mail to passing ships on the Detroit River. The JW Westcott has its own ZIP Code — 48222.



This is the J.W. *Westcott II* approaching a Canadian freighter on the Detroit River

POST OFFICE with walk-in freezers

Fact #770 | Updated: February 25, 2022

The Peach Springs, AZ, Post Office has walk-in freezers for food destined for delivery by mule train to the bottom of the Grand Canyon.



STAMPS in caves

Fact #768 | Updated: February 25, 2022

No troglodytes here! The Stamp Fulfillment Service facility, located in Kansas City, MO, is located in a limestone cave 150 feet beneath the ground. It is the Postal Service's only facility located underground.

MULE TRAIN delivery

Fact #310 | Updated: February 28, 2022

The consistent, year-round temperatures and humidity levels in the caves allow the stamps to be maintained in mint-quality condition. The underground facility also keeps the inventory and employees safe from snow, flooding, winds and tornadic activity common in the Midwest.

The most unusual delivery method used by the Postal Service is a mule train in Arizona. The mules carry mail, food and supplies down a 9-mile trail to the Havasupai Indians at the bottom of the Grand Canyon.

Got mules? The most unusual mode of delivery used by the Postal Service is the mule train.

Since the 1930s, mules have been carrying mail and goods to the Havasupai people located inside the Grand Canyon.

- 10-22 mules are used daily, along with one wrangler on horseback, 5 days a week, traveling 9 miles down into the canyon to the Supai Post Office.
- It takes **3 hours** to get down and **5 hours** to get back up
- On the way back up, the wrangler untethers the mules and sends them back up on their own
- Each mule can carry up to **200 pounds** and the weight is loaded equally on each side for balance
- The Supai Post Office has a special Mule Train postmark





28 Franklin cities

Fact #309 | Updated: February 28, 2022

Ben, this one's for you! Franklin is the most common city name — 28 of them — with Clinton, Madison and Washington tied for second (27 each) and Chester, Greenville, Marion and Springfield at third (25). The most common Post Office name is Clinton, with 26 locations, followed by Madison at second (25) and Franklin and Washington tied for third (24).



33 MILE LONG Main Street

Fact #308 | Updated: February 28, 2022

The longest Main Street in the country is located in Island Park, ID, and is 33 miles long.



13,425
Main streets

Fact #307 | Updated: February 28, 2022

Main Street America is here and here and... The most common street name in the country is Main —21,514 of them — followed by Second with 17,120, Third with 15,948 and First with 14,908.

46,395
deliveries

Fact #279 | Updated: February 28, 2022

The ZIP Code with the most street deliveries is Cathedral Station, NY, 10025, with 46,395!

COLDEST
Post Office

Fact #276 | Updated: March 8, 2021

Our Post Office in Utqiagvik, North Slope of Alaska -- formerly Barrow (99723) and Wainwright (99782) -- experiences the coldest temperatures.

2.3 MILE
delivery route

Fact #151 | Updated: February 28, 2022

The shortest rural delivery route is in Parker, CO. The carrier travels 2.3 miles and delivers to 869 boxes.

181.4 MILE
delivery route

Fact #150 | Updated: February 28, 2022

The longest rural delivery route is in Clarinda, IA. The carrier travels 181.4 miles daily and delivers to 234 boxes.

12345
easiest to
remember

Fact #149 | Updated: March 4, 2021

The easiest to remember ZIP Code is 12345, a unique ZIP Code for General Electric in Schenectady, NY.

HIGHEST ZIP Code number

Fact #148 | Updated: March 4, 2021

The highest ZIP Code number is 99950 in Ketchikan, AK.

LOWEST ZIP Code number

Fact #147 | Updated: March 4, 2021

The lowest ZIP Code number is 00501, unique for the Internal Revenue Service in Holtsville, NY.

DELIVERY dock-to-dock

Fact #146 | Updated: March 4, 2021

Dock-to-dock delivery on the Magnolia River in Alabama. A 15-foot contract mail boat delivers to 176 dock-side mailboxes on a 31-mile stretch of the river.

POST OFFICE most needing a bridge

Fact #143 | Updated: February 28, 2022

The Post Office in most need of a bridge is in Point Roberts, WA. It can be reached by car only by driving through British Columbia, Canada. Only a boat or float plane can travel directly there.



2ND OLDEST Post Office

Fact #141 | Updated: March 4, 2021

The second oldest Post Office location is in Castine, ME, from 1833.

OLDEST Post Office

Fact #140 | Updated: March 4, 2021

The Hinsdale, NH, Post Office (03451) has been located in the same building since 1816.

LARGEST retail space

Fact #139 | Updated: March 7, 2022

The largest U.S. Postal Service retail space is the James A. Farley Post Office in New York, NY (10001), at 33,100 square feet.

SMALLEST POST OFFICE

Fact #138 | Updated: March 4, 2021

The smallest Post Office is located in Ochopee, FL (34141) and is 61.3 square feet. The building used to be a storage facility for irrigation pipes of an adjacent tomato farm. It was converted into a Post Office in 1953, after a fire that destroyed a previous Post Office and general store.

There is a sign beside the office that reads:

OCHOPEE POST OFFICE

Considered to be the smallest post office in the United States, this building was formerly an irrigation pipe shed belonging to the J.T. Gaunt Company tomato farm. It was hurriedly pressed into service by postmaster Sidney Brown after a disastrous night fire in 1953 burned

Ochopee's general store and post office. The present structure has been in continuous use ever since – as both a post office and ticket station for Trailway's bus lines – and still services residents in a three-county area, including deliveries to Seminole and Miccosukee Indians living in the region. Daily business often includes requests from tourists and stamp collectors the world over for the famed Ochopee postmark. The property was acquired by the Wooten Family in 1992.

— Collier County Board of County Commissioners



STUCK in the middle

Fact #137 | Updated: March 4, 2021

The most centered Post Office within the 48 contiguous states is located in Lebanon, KS.

MOST CENTRAL Post Office of them all

Fact #136 | Updated: March 4, 2021

The most centered Post Office within all 50 states is located in Belle Fourche, SD.

NORTHMOST Utqiagvik, AK

Fact #134 | Updated: March 4, 2021

The northernmost post office location within the 50 states is in Utqiagvik, AK (formerly Barrow).

NORTHMOST within 48 states

Fact #133 | Updated: March 4, 2021

The northernmost Post Office location within the 48 contiguous states is in Angle Inlet, MN.

SOUTHMOST within the 50 states

Fact #132 | Updated: March 4, 2021

The southernmost Post Office location within the 50 states is located in Naalehu, HI.

SOUTHMOST within 48 states

Fact #131 | Updated: March 4, 2021

The southernmost Post Office location within the 48 contiguous states is located in Key West, FL.

EASTMOST
within the 50
states*Fact #130 | Updated: March 4, 2021*

The easternmost Post Office location in the 50 states is in Lubec, ME.

WESTMOST
within the 50
states*Fact #129 | Updated: March 4, 2021*

The westernmost Post Office location in the 50 states is in Adak, AK.

WESTMOST
in the 48
contiguous
states*Fact #128 | Updated: March 4, 2021*

The westernmost Post Office location in the 48 contiguous states is in La Push, WA.

WETTEST
U.S. Post Office*Fact #127 | Updated: March 4, 2021*

The wettest Post Office is at Mt. Waialeale, near the Kapaa Post Office in Hawaii.

LOWEST
U.S. Post Office*Fact #126 | Updated: March 4, 2021*

The lowest U.S. Post Office is located in Death Valley, CA (92328), at 282 feet below sea level. This is also the driest and hottest Post Office location.

HIGHEST
U.S. Post Office*Fact #125 | Updated: March 4, 2021*

The highest Post Office in the United States is located in Alma, CO (80420), at 10,578 feet above sea level.

Priority: YOU

Our priority is and always will be delivering great service that's affordable and dependable. When you ship with Priority Mail, you get free shipping supplies, flat-rate options, insurance included, USPS Tracking and easy online tools. It all adds up to one of the best values in the shipping business!

COMPANION PDF – 2022 ([HTTPS://FACTS.USPS.COM/WP-CONTENT/UPLOADS/POSTAL-SERVICE-IS....PDF](https://facts.usps.com/wp-content/uploads/postal-service-is....pdf))

LABEL BROKER

Fact #725 | Updated: March 7, 2022

Label Broker. This service is easy! It solves the ever-increasing problem of customers conducting business online and not being able to print shipping labels. With Label Broker, customers can get a shipping label on their mobile device, in the form of a QR code, directly from the merchant.

The customer uses the code to print a label at a Post Office or on a printer connected to *usps.com*. Label Broker is also the foundational technology that has enabled USPS Operation Santa to expand and evolve in a digital format.

For more information, go to www.usps.com/business/label-broker.htm
(<http://www.usps.com/business/label-broker.htm>)



.POST Group

Fact #713 | Updated: March 7, 2022

The Postal Service is one of 37 members of the .POST Group. The UPU's .POST Group, created in 2013, is a trusted internet domain, established exclusively for the global postal sector and sponsored by the UPU.

The mission of the .POST Group is to support the posts as they provide their customers with reliable and secure web services.

The .POST Group promotes innovation, integration and inclusion of postal activities on a uniquely secure platform, employing a rigorous UPU community membership and authentication process to deliver a safe, uncompromised and trustworthy customer experience.

More information can be found at [upu.int/en/Universal-Postal-Union/About-UPU/Cooperatives-Boards/-POST-Group](http://www.upu.int/en/Universal-Postal-Union/About-UPU/Cooperatives-Boards/-POST-Group) (<http://www.upu.int/en/Universal-Postal-Union/About-UPU/Cooperatives-Boards/-POST-Group>)

EXPRESS MAIL

Service
Cooperative

Fact #712 | Updated: March 9, 2021

The Postal Service is a member of the Express Mail Service (EMS) Cooperative. The EMS Cooperative was created by the UPU in 1999 to get the more than 180-member countries to work together to provide EMS – the fastest cross-border international postal product.

The EMS global network has the largest number of customer access points in the world, serving more than 5 billion citizens of member posts.

The overall market size for cross-border ecommerce has grown to more than 9 billion items each year, with expected growth to 13 billion by 2024. Note: these are pre-pandemic numbers.

More information can be found at [post/en/global-network](https://www.ems.post/en/global-network) (<https://www.ems.post/en/global-network>).

KAHALA Post Group

Fact #711 | Updated: March 7, 2022

The Postal Service is one of 11 members of the Kahala Post Group (KPG).

The **Kahala Posts Group (KPG)** is an international alliance of the world's largest postal administrations that collaborate to improve international postal services.

Launched in 2002 by six postal administrations, the KPG network accounts for almost half of the world's internationally recognized Express Mail Service (EMS) traffic.

More information can be found at [kahalapostsgroup.com/](http://www.kahalapostsgroup.com/) (<http://www.kahalapostsgroup.com/>).

INT'L post corporation

Fact #710 | Updated: March 9, 2021

The Postal Service is one of 25 members of the International Post Corporation (IPC). The IPC is a cooperative association of posts in North America, Europe and Asia Pacific.

Since 1989, the IPC has created solutions and services that are used by more than 180 posts worldwide and is the leading service provider of the global postal industry. Collectively, IPC members deliver 80-percent of global mail volumes — more than 330 billion mail pieces each year.

More information can be found at [ipc.be/](http://www.ipc.be/) (<http://www.ipc.be/>).

UNIVERSAL Postal Union

Fact #709 | Updated: March 9, 2021

The Postal Service is a member of the Universal Postal Union (UPU).

- Established in 1874, the UPU, with its headquarters in Bern, Switzerland, is the second oldest international organization worldwide.
- With its 192-member countries, the UPU is the primary forum for

cooperation between posts. The UPU helps to ensure a truly universal network of products and services.

- More information can be found at [upu.int](https://www.upu.int).

3.3
MILLION
pounds weekly

Fact #708 | Updated: March 7, 2022

The Postal Service sends 3.3 million pounds of international, military, and diplomatic mail and packages weekly, using 70 international airlines, composed of 11 US flag carriers and 19 foreign flag carriers, and their affiliates.

\$2.2
billion

Fact #707 | Updated: March 7, 2022

International Mail is a \$2.2 billion business for the Postal Service.

31,247
retail offices

Fact #669 | Updated: March 7, 2022

There are 31,247 Postal Service-managed retail offices. This number does not include contract offices.

NEWEST
post office

Fact #666 | Updated: March 9, 2021

Power, MT (59468), built in 2019. This is the first Post Office built using shipping containers.

UNSTAFFED
Post Office

Fact #640 | Updated: March 8, 2021

There is a 24-hour, unstaffed, self-service Post Office in Northern Virginia that allows customers to conduct most shipping and mailing transactions quickly and easily themselves. The Self-Service Post Office provides round-the-clock accessibility to PO Boxes, as well as self-service kiosks and an automated package drop.

In 2020, more than 8,000 customers took advantage of this convenient office.

\$158
MILLION
in short-paid
revenue

Fact #540 | Updated: March 7, 2022

The Automated Package Verification (APV) program automates the detection and collection of postage due for mail pieces with insufficient postage using automated package processing equipment. The APV program collected \$158.3 million in short-paid revenue and saved more than \$202.7 million from being short-paid postage in FY21.

TOP 5
usps.com sites

Fact #514 | Updated: March 7, 2022

Top five pages, on usps.com in 2021, in order of popularity, were USPS Tracking, Informed Delivery, The Postal Store, Change of Address and Post Office Locator.

In 2021, the top five pages, on usps.com, in order of popularity:

1. USPS Tracking — 901 million users
2. Informed Delivery — 112 million users
3. The Postal Store — 42 million users
4. Change of Address — 31 million users
5. Post Office Locator — 30 million users

SUNDAY
package
delivery

Fact #402 | Updated: March 7, 2022

Our Sunday best. In 2021, the Postal Service continued to expand Sunday package delivery to meet the shipping needs of customers shopping online.

PRIORITY YOU!

Fact #400 | Updated: March 4, 2021

Priority: YOU! The Postal Service priority is and always will be serving you. With free shipping supplies, flat-rate options, \$50 worth of free insurance, improved tracking and easy online tools, Priority Mail offers you one of the best values in the shipping business.

Here's more you should know:

Priority Mail Express offers you overnight delivery to most U.S. locations with up to \$100 of insurance coverage included with most shipments.

With Priority Mail Flat Rate boxes and envelopes, there's no need to weigh or calculate postage of packages up to 70 pounds.

Priority Mail and Priority Mail Express boxes, envelopes and labels, as well as customs pouches for international mailing products are available at no charge. They can be ordered at *usps.com* and delivered to your door or picked up at a local Post Office.

Priority Mail is the environmental choice — boxes are recyclable!

43.1 MILLION Click-N-Ship labels

Fact #397 | Updated: March 7, 2022

Click-N-Ship customers can print shipping labels with postage for Priority Mail Express, Priority Mail, Global Express Guaranteed, Priority Mail International, Priority Mail Express International and First-Class Package International Service. Click-N-Ship customers created more than 44.1 million labels, which generated more than \$534 million in sales in 2021.

Click-N-Ship allows customers to print shipping labels with postage for Priority Mail, Priority Mail Express, Global Express Guaranteed, Priority Mail International, Priority Mail Express International and First-Class Package International Service.

- **Click-N-Ship Loyalty Program** enables hundreds of thousands of Click-N-Ship business users to enjoy tiered levels of financial benefits and discounts when they use the application to ship Priority Mail and Priority Mail Express.

53M visitors to mobile site

Fact #380 | Updated: March 7, 2022

In 2021, there were more than 53 million visitors to *m.usps.com*, the USPS Mobile app, averaging more than 143,000 visits per day.

- **The Post Office on your phone.** The Postal Service app — **USPS Mobile** — is available on Apple and Android platforms. Some of the most popular functions currently available on *com* — USPS Tracking, Informed Delivery, Post Office Locator, ZIP Code Lookup, The Postal Store, calculating postage, holding mail, requesting Package Pickup, and ordering shipping supplies — are now available on most smart phones.

- **The USPS Mobile app** was downloaded more than **8 million** times from the Apple App Store and Google Play Store.
- More than **900 million** users visited the USPS Mobile site using a mobile device, representing 75 percent of the traffic.
- In 2021, there were more than **53 million visitors** to the mobile site — *usps.com* — the USPS Mobile app — averaging more than 143,000 visits per day.

8M
USPS Mobile
downloads

Fact #377 | Updated: March 7, 2022

There's a Post Office on your phone. In 2021, the Postal Service app -- USPS Mobile -- was downloaded more than 8 million times from the Apple App Store and Google Play Store.

The free usps.com iPhone app was launched in 2009.

Some of the most popular functions currently available on usps.com — Informed Delivery (<https://facts.usps.com/innovation/#fact203>), USPS Tracking, Post Office Locator, ZIP Code Lookup, calculating postage, holding mail, requesting Package Pickup and ordering shipping supplies — are now available on most smart phones.

44,151
point-of-sale
terminals

Fact #365 | Updated: March 7, 2022

The Postal Service maintains 44,151 point-of-sale terminals, 2,706 self-service retail kiosks, 6,608 mobile point-of-sale handheld devices, and 1,431 business partner retail locations nationwide.

\$364
MILLION
SSK revenue

Fact #364 | Updated: March 7, 2022

In 2021, the Postal Service received \$364.5 million in revenue from 2,742 postal self-service kiosks (SSK).

6.18
MILLION
passport
applications

Fact #346 | Updated: March 7, 2022

The Postal Service accepted 6.18 million passport applications in 2021.

Postal Service revenue from passport applications was \$272 million.

1,400
historic buildings

Fact #345 | Updated: March 5, 2021

More than 1,400 postal-owned buildings are listed on the National Register of Historic Places.

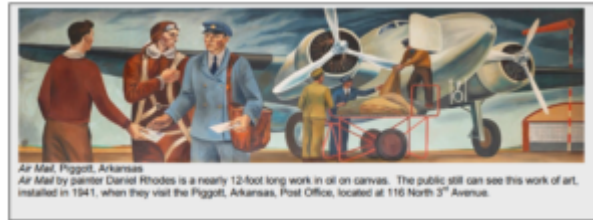
Our History is the History of America

They are treasures. But they're not hidden. Many of our buildings are historical properties. Inside -and outside – many of our Post Offices, you'll find impressive works of art that reflect the stories of our people and our nation.

- More than 1,400 postal-owned buildings are listed on the National Register of Historic Places. More information can be found at [gov/nr/research/](http://www.nps.gov/nr/research/) (<http://www.nps.gov/nr/research/>)
- More than 1,400 murals and/or sculptures from President Roosevelt's New Deal Programs are in our Post Offices around the

nation.

- Five murals were featured on First-Class postage stamps in 2019
- *The United States Postal Service: An American History* is an entire publication dedicated to our history and can be found at usps.com/who-we-are/postal-history/welcome.htm.



MAILERS providing technical advice

Fact #323 | Updated: March 8, 2021

Postmaster General's Mailers Technical Advisory Committee (MTAC). Representing select mailing associations, this group works to enhance the value of mail by providing technical advice and recommendations to the Postal Service. More information can be found at postalpro.usps.com/mtac.

NPF annual industry conference

Fact #322 | Updated: March 8, 2022

National Postal Forum (NPF). The annual mailing industry conference provides educational and networking opportunities for thousands of business customers. Attendees learn about the latest mail trends and innovations through more than 100 workshops and seminars. More information can be found at npf.org.

More information can be found at npf.org.



MILITARY Care Kit

Fact #318 | Updated: March 8, 2022

The Postal Service is the best way to ship directly to APO, FPO and DPO locations. The Military Care Kit contains six Priority Mail Flat Rate boxes — two large-sized and four medium-sized — six address labels, one roll of tape and six customs forms, and can be ordered at no charge at usps.com/shop or by calling 800-610-8734.

The Military Care Kit — and the special pricing offered for APO, FPO and DPO destinations — makes it easy to send care packages to loved ones stationed overseas.

usps.com/shop (<http://usps.com/shop>)



THIRD ounce free

Fact #295 | Updated: March 8, 2021

Commercial mailers can use the third ounce of First-Class presort letters to enclose promotional materials like coupons and advertising for their customers with no extra charge by the Postal Service.

BRANDED mailpieces

Fact #294 | Updated: March 8, 2021

With Picture Permit Indicia, commercial mailers can modify the permit imprint indicia on First-Class Mail and USPS Marketing Mail with a corporate logo, brand image or trademark to raise brand awareness and market products and services.

EDDM nearly \$4B in revenue

Fact #291 | Updated: March 7, 2022

Every Door Direct Mail - EDDM - is an online service that uses demographic data to help business mailers target their marketing mail pieces to customers in a select neighborhood, city or ZIP Code. Since 2011, EDDM has resulted in more than 26 billion pieces of mail and \$3.8 billion in revenue.

The USPS Printer Directory provides customers free access to local print, design and mail preparation services for Every Door Direct Mail and other direct mail products through a searchable database and mapping program. More than 700 listings populate the directory that serves small and medium-size businesses nationwide.

34,223 total retail offices

Fact #223 | Updated: February 28, 2022

The Postal Service has more than 34,000 retail offices across the United States. This number includes contract locations.

31,247 retail Post Offices

Fact #226 | Updated: February 28, 2022

There are 31,247 Postal Service-managed retail Post Offices in the United States.

749.1 million customer visits

Fact #221 | Updated: February 28, 2022

The Postal Service recorded 749.1 million retail customer visits during 2021.

44 MILLION Informed Delivery Customers

Fact #203 | Updated: March 7, 2022

With Informed Delivery service, you can digitally preview your incoming mail and manage your packages from a computer, tablet or mobile device. More than 44 million customers have enrolled since it was launched in 2017.

Informed Delivery provides eligible residential customers with a digital preview of their household's incoming mail scheduled to arrive soon. Users can view grayscale images of the exterior, address side of incoming letter-sized mail pieces (not the inside contents) via email or an online dashboard.

Informed Delivery also allows customers to track packages delivered by the Postal Service and see when they will be delivered.

For more information and to sign up, go to usps.com/informedelivery (<http://usps.com/informedelivery>).



LARGEST retail space

Fact #139 | Updated: March 7, 2022

The largest U.S. Postal Service retail space is the James A. Farley Post Office in New York, NY (10001), at 33,100 square feet.

LARGEST retail network

Fact #98 | Updated: March 1, 2022

Retail giant. The Postal Service has the nation's largest retail network (34,223) — larger than Subway (26,932) — larger than Dollar General (17,348) — larger than Starbucks (15,183) — larger than McDonald's (13,683).

235,917 money orders

Fact #81 | Updated: March 7, 2022

The Postal Service issues 235,917 money orders daily.

During 2021, the Postal Service issued 71.5 million money orders.

\$12 MILLION online sales

Fact #78 | Updated: March 7, 2022

The Postal Service brings in \$1.2 million daily from online stamp and retail sales at The Postal Store at usps.com.

12.3 million visits

Fact #73 | Updated: March 7, 2022

There are 12.3 million daily visits to usps.com.

FREE package pickup

Fact #34 | Updated: March 4, 2021

With Package Pickup, you can go online to request Priority Mail Express and Priority Mail packages be picked up at your home or offices as part of your mail carrier's regular route — for free.

4.5 BILLION usps.com visits

Fact #28 | Updated: March 7, 2022

In 2021, usps.com recorded 4.5 billion visits -- averaging more than 12 million visitors each day. It's one of the most frequently visited government sites.

\$454 MILLION online sales

Fact #29 | Updated: March 7, 2022

In 2021, stamp and retail sales at The Postal Store on usps.com -- the official online Post Office -- totaled \$454 million.

Serving communities.

The Postal Service is part of the fabric of the nation with employees making a difference in every community across the country. Here's a look at some of the programs and causes our organization supports.

COMPANION PDF – 2022 ([HTTPS://FACTS.USPS.COM/WP-CONTENT/UPLOADS/CENTURIES-OF-INCLUSION.PDF](https://facts.usps.com/wp-content/uploads/centuries-of-inclusion.pdf))

FAMOUS POSTAL EMPLOYEES – PDF ([HTTPS://FACTS.USPS.COM/WP-CONTENT/UPLOADS/POSTAL-FACTS_INFOGRAPHICS_FAMOUS.PDF](https://facts.usps.com/wp-content/uploads/postal-facts_infographics_famous.pdf))

FAMOUS postal employees

Fact #869 | Updated: February 28, 2022

Heads of industry. Hollywood legends. Sports heroes. Singers. Painters. Writers. And a couple presidents. All were postal employees before they became household names! Twelve have even been featured on stamps.

Most people know that Benjamin Franklin worked for the Postal Service, but did you know that Bing Crosby and Walt Disney did, too? What about Steve Carell or Charles Lindbergh? John Prine or Brittany Howard?

Twelve of these former employees have also been commemorated on U.S. postage stamps and are marked by an asterisk.

▪ John Brown	Abolitionist	Postmaster, Randolph, PA – 1828-1835
▪ Steve Carell	Actor, comedian	Rural letter carrier, Littleton, MA – 1985
▪ Bing Crosby*	Singer, actor	Substitute and regular clerk, Spokane, WA – 1921
▪ Walt Disney*	Film producer	Substitute carrier, Chicago, IL – 1918
▪ William Faulkner*	Novelist	Postmaster, University, MS – 1921-1924
▪ Benjamin Franklin*	Statesmen, inventor	Postmaster General, 1775-1776
▪ Sherman Hemsley	Actor	Clerk, Philadelphia, PA, and New York, NY – 1960s
▪ Conrad Hilton	Hotel magnate	Postmaster, San Antonio, NM – 1910-1911
▪ Harry Hooper	Baseball Hall-of-Famer	Postmaster, Capitola, CA – 1933-1957
▪ Brittany Howard	Singer, Alabama Shakes	Rural carrier assistant, Athens, AL – 2011
▪ Rock Hudson	Actor	Substitute letter carrier, Winnetka, IL – ca. 1947
▪ Sidney Lanier*	Poet	Clerk, Macon, GA – ca. 1858
▪ Abraham Lincoln*	U.S. President	Postmaster, New Salem, IL – 1833-1836
▪ Charles Lindbergh*	Aviator	Airmail pilot – 1926-1927
▪ Fred C. Lindstrom	Baseball Hall-of-Famer	Postmaster, Evanston, IL – 1961-1972
▪ Samuel F. B. Morse	Inventor	Superintendent, Telegraph Unit – 1845-1846
▪ John Prine	Singer, songwriter	Letter carrier, Maywood, IL – 1964-1969
▪ Knute Rockne*	Football coach	Substitute and regular clerk, Chicago, IL – 1907-1910
▪ Adlai E. Stevenson	U.S. Vice President	First Assistant Postmaster General – 1885-1889
▪ Harry S. Truman*	U.S. President	Postmaster, Grandview, MO – 1914-1915
▪ John Wanamaker	Retail magnate	Postmaster General – 1889-1893
▪ Noah Webster*	Lexicographer	Special agent – 1793
▪ Hal Williams	Actor	Clerk, Los Angeles, CA – 1968-70s
▪ Richard Wright*	Author	Substitute clerk, Chicago, IL – 1929-1932
▪ N.C. Wyeth*	Painter	Mail carrier, Fort Defiance, AZ, to Crozier, NM – 1904

DAILY NEWS LINK

Fact #803 | Updated: February 25, 2022

Link, a daily news site for Postal Service employees, is available on any computer with internet access. The content is produced by a team of writers and editors based at USPS headquarters in Washington, DC. Additional contributions come from postal employees across the nation. The site is updated with new articles, photos, graphics and videos each weekday.

LINK

Regular features include “Heroes’ Corner,” a column about employees who perform heroic deeds, and “On the Move,” a weekly roundup of employees who’ve received new appointments or recognition.

Employees with postal email addresses receive a Link email each weekday with links to the most recent stories. The team also produces an end-of-week Link Recap email with stories readers might have missed, along with Link Extra emails for breaking news.

Link mobile is a mobile-friendly version of the Link site. Link mobile has all the news you’ll find on the desktop version of Link, except it’s formatted for easy reading on handheld smart devices. Employees and others can receive a weekly Link mobile email by subscribing at [*www.usps.link* \(https://gcc02.safelinks.protection.outlook.com/?url=http%3A%2F%2Fwww.usps.link%2F&data=04%7C01%7Csue.brennan%40usps.gov%7Ccc68cdb55c4e421f9f7308d9f894bb6b%7Cf9aa5788eb334a498ad076101910cac3%7C0%7C0%7C637814139941525249%7CUnknown%7CTWFpbGZsb3d8eyJWljoIMC4wLjAwMDAiLCJQIjoiV2luMzliLCJBTil6Ik1haWwiLCJXVCI6Mn0%3D%7C3000&sdata=NUmEqQWyJulwpK4CcLTQWzJqSmyZ%2BjSEjrEFh5jICmQ%3D&reserved=0\).](https://gcc02.safelinks.protection.outlook.com/?url=http%3A%2F%2Fwww.usps.link%2F&data=04%7C01%7Csue.brennan%40usps.gov%7Ccc68cdb55c4e421f9f7308d9f894bb6b%7Cf9aa5788eb334a498ad076101910cac3%7C0%7C0%7C637814139941525249%7CUnknown%7CTWFpbGZsb3d8eyJWljoIMC4wLjAwMDAiLCJQIjoiV2luMzliLCJBTil6Ik1haWwiLCJXVCI6Mn0%3D%7C3000&sdata=NUmEqQWyJulwpK4CcLTQWzJqSmyZ%2BjSEjrEFh5jICmQ%3D&reserved=0))

#POSTAL PROUD

Fact #729 | Updated: March 7, 2022

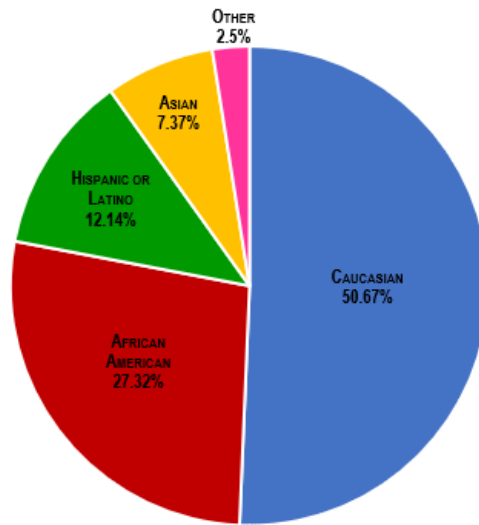
#PostalProud recognizes employees for the work they do every day. It provides individuals at every level of the organization with an opportunity to share why they are proud to be a postal employee. More than 2,500 employees in 372 unique jobs have been recognized since its inception in 2018.

POSTAL diversity

Fact #705 | Updated: March 9, 2021

The Postal Service workforce remains one of the most diverse organizations in the nation. Our pride in serving the American public is a common thread that unites us.

- Women make up nearly 46 percent of our workforce
- Minorities represent 49 percent of our workforce
- The Postal Service employs nearly 73,000 veterans
- The Postal Service employs more than 35,000 employees with disabilities, including nearly 10,000 disabled veterans



FIRST female PMG

Fact #704 | Updated: March 9, 2021

The first female Postmaster General was Megan J. Brennan, Washington, DC, 2015.



FIRST African American on stamp

Fact #702 | Updated: March 9, 2021

The first African American on a stamp was Booker T. Washington, 1940.



FIRST
Native American
on a stamp
Fact #700 | Updated: March 9, 2021

The first Native American on a stamp was Pocahontas, 1907.



FIRST
Hispanic
American on a
stamp
Fact #699 | Updated: March 9, 2021

The first Hispanic American on a stamp was Adm. David Farragut, 1903.



FIRST African American Inspector

Fact #697 | Updated: March 9, 2021

The first known African American postal inspector was Isaac Myers, Baltimore, MD, 1870.



Isaac Myers served from 1870 until 1879. During his employment he helped solve a number of notorious cases.

1ST AMERICAN woman on a stamp

Fact #696 | Updated: March 9, 2021

The first American woman on a U.S. postage stamp was Martha Washington, 1902.

FIRST African American Carrier

Fact #695 | Updated: March 9, 2021

The first known African American mail carrier was James B. Christian, Richmond, VA, 1869.

FIRST KNOWN African American Postmaster

Fact #692 | Updated: March 9, 2021

The first known African American Postmaster was James W. Mason, Sunny Side, AR, 1867.

FIRST KNOWN female mail carrier

Fact #689 | Updated: March 9, 2021

The first known female mail carrier was Sarah Black, mail messenger, Charlestown, MD, 1845.

FIRST FEMALE postmaster

Fact #688 | Updated: March 9, 2021

The first known female Postmaster in the United Colonies was Mary Katherine Goddard, Baltimore, MD, 1775.

1860 African American Postmasters

Fact #686 | Updated: March 9, 2021

African Americans worked as Postmasters, clerks and carriers beginning in the 1860s — 100 years before the Civil Rights era brought wider opportunity in the American workplace.

WOMEN postmasters

Fact #685 | Updated: March 9, 2021

Women served as Postmasters in this country more than a century before they won the right to vote.

68,000 Veterans

Fact #660 | Updated: March 1, 2022

Veterans. The Postal Service employs nearly 68,000 military veterans, making it one of the largest employers of veterans in the country. The organization has also issued more than 140 stamps honoring the nation's military history, including the Service Cross Medals stamps.

EMPOWERED workforce

Fact #652 | Updated: March 7, 2022

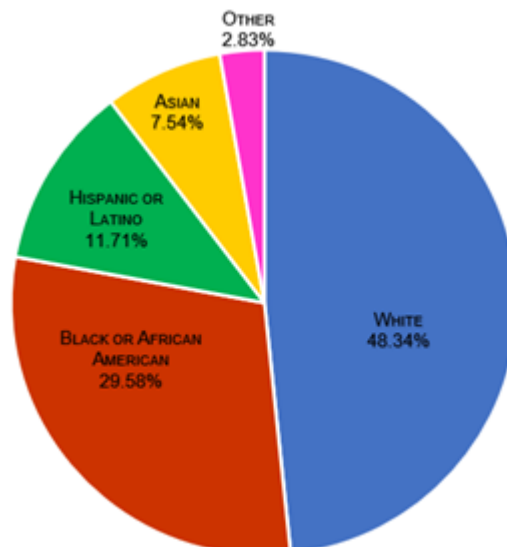
The Postal Service invests more than \$600 million in training its workforce. The organization encourages employees to take advantage of self-paced career development by offering 24,000 online courses and 28 educational partnerships offering discounts towards degree and certification programs.

52% minorities

Fact #580 | Updated: March 7, 2022

We are diverse! Minorities make up 52 percent of the Postal Service workforce. The Postal Service workforce is one of the most diverse in the nation. We look like America. That is our strength.

U.S. Postal Service Racial/Ethnicity Composition



2,000 career options

Fact #579 | Updated: March 7, 2022

SOCIAL responsibility

Fact #563 | Updated: March 1, 2022

ADDRESS deciphering

Fact #538 | Updated: March 7, 2022

VERY SPECIAL delivery

Fact #386 | Updated: March 4, 2021

The Postal Service is composed of more than 653,000 people in more than 2,000 functions, including letter carriers, mail processing clerks, tractor-trailer operators, engineers, mail handlers, nurses, postmasters, mechanics and more — all the way up — to the postmaster general.

Social responsibility. The Postal Service supports communities nationwide. These efforts include facilitating the nation's largest one-day food drive, working with customers to prevent dog bites, educating customers on consumer protection, and delivering holiday magic through USPS Operation Santa.

You call that scribble legible? Employees at the Remote Encoding Center in Salt Lake City, UT, are responsible for deciphering terribly handwritten or shoddily printed addresses.

Although it was against postal regulations, in the early days of Parcel Post, a few parents managed to mail their children to relatives. In 1913, an 8-month-old baby in Ohio was mailed by his parents to his grandmother who lived a few miles away.

Grandma, can you babysit?

Just a few weeks after Parcel Post began, Jesse and Mathilda Beagle "mailed" their 8-month-old son James to his grandmother, who lived a few miles away near Batavia, Ohio. Baby Beagle was just under the initial 11-pound limit for parcels. Rural Carrier Vernon Lytle picked up the baby from his parents' house and carried him in his mail wagon to his grandmother's house. The postage was fifteen cents, and the "parcel" was insured for \$50. Although it was against postal regulations, several children traveled via U.S. Mail in the early years of Parcel Post. Initially the only animals that were allowed in the mail were bees and bugs. In 1918, day-old chicks were allowed in the mail. In 1919, some additional "harmless live animals" were permitted, but children did not fall into this category.



**2.15
BILLION**
dollars

Fact #363 | Updated: March 7, 2022

Every two weeks, the Postal Service pays \$2.15 billion in salaries and benefits.

75TH
Postmaster
General

Fact #348 | Updated: March 7, 2022

Louis DeJoy is the 75th Postmaster General of the United States.



1,400
historic buildings

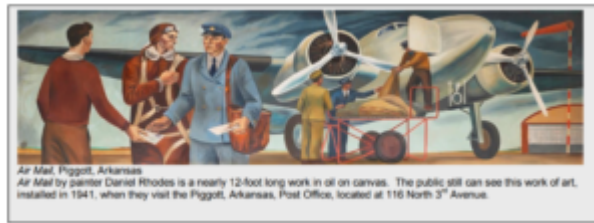
Fact #345 | Updated: March 5, 2021

More than 1,400 postal-owned buildings are listed on the National Register of Historic Places.

Our History is the History of America

They are treasures. But they're not hidden. Many of our buildings are historical properties. Inside -and outside – many of our Post Offices, you'll find impressive works of art that reflect the stories of our people and our nation.

- More than 1,400 postal-owned buildings are listed on the National Register of Historic Places. More information can be found at [gov/nr/research/](http://www.nps.gov/nr/research/) (<http://www.nps.gov/nr/research/>)
- More than 1,400 murals and/or sculptures from President Roosevelt's New Deal Programs are in our Post Offices around the nation.
- Five murals were featured on First-Class postage stamps in 2019
- *The United States Postal Service: An American History* is an entire publication dedicated to our history and can be found at usps.com/who-we-are/postal-history/welcome.htm.



JUDICIOUS resolving disputes

Fact #340 | Updated: March 5, 2021

The Postal Service's Judicial Officer Department is a court system that conducts hearings and neutrally resolves a wide variety of disputes involving postal matters. Its independent decisions involve contract disputes, employee debt disputes, mail disputes and mail fraud, among many other areas.

CONNECTING USPS and mailers

Fact #324 | Updated: March 8, 2021

Postal Customer Councils (PCCs). These Postal Service-affiliated networks connect business mailers with local Post Office leadership to develop more effective and profitable mailings through training and information sharing. Since the 1960s, PCCs have been the go-to local resource for helping mailers learn, innovate and build their business. More information can be found at postalpro.usps.com/pcc.

Find more information at postalpro.usps.com/pcc (<http://postalpro.usps.com/pcc>).

MAILERS providing technical advice

Fact #323 | Updated: March 8, 2021

Postmaster General's Mailers Technical Advisory Committee (MTAC). Representing select mailing associations, this group works to enhance the value of mail by providing technical advice and recommendations to the Postal Service. More information can be found at postalpro.usps.com/mtac.

ABOUT that motto

Fact #321 | Updated: February 28, 2022

The U.S. Postal Service has no official motto. Nope, it's not this: "Neither snow nor rain nor heat nor gloom of night stays these couriers from the swift completion of their appointed rounds." But we certainly appreciate the sentiment.

About that motto...

Those words are engraved on the front of the James A. Farley Post Office in NYC, set in stone by the architectural firm that built it. The phrase is taken from an ancient book by the Greek historian Herodotus and refers to messengers in the Persian Empire.

The phrase comes from book 8, paragraph 98, of *The Persian Wars* by Herodotus, a Greek historian. During the wars between the Greeks and Persians (500-449 B.C.), the Persians operated a system of mounted postal couriers who served with great fidelity.

The popular belief that Herodotus's description of the Persian postal service is about the U.S. Postal Service is a tribute to the hundreds of thousands of men and women who have delivered the mail reliably and

dependably, through all conditions, for centuries.



FIRST Postmaster General

Fact #320 | Updated: March 8, 2021

1980 MPSA formed

Fact #319 | Updated: March 7, 2022

The Post Office Department was founded in 1775 with Benjamin Franklin as the first Postmaster General. His annual salary was \$1,000. Before 1971, the PMG was a Cabinet member.

The Military Postal Service Agency was formed in 1980, consolidating the postal operations of the Army, Air Force, Navy and Marine Corps. The Department of Defense designated the Secretary of the Army as the single military mail manager.

Military and Diplomatic Mail in brief.

- The Military Postal Service provides service in **63** countries.
- There are **401** land-based military Post Offices and **626** based on ships.
- The U.S. Department of State Diplomatic Post Office serves 32,500 customers at 184 diplomatic missions across 103 countries around the world.
- Within the military and diplomatic services, **1,200** ZIP Codes are served around the world.
- The Military Postal Service Agency was formed in 1980, consolidating the postal operations of the Army, Air Force, Navy and Marine Corps. The Department of Defense designated the Secretary of the Army as the single military mail manager.
- Members of the military and diplomatic corps receive virtually the same level of service as they would if they were at home in the United States. Differences are based on the country in which they're stationed and the type of mission in which they're involved.
- Military and Diplomatic Mail moves within the United States via the Postal Service transportation network to major mail processing facilities.
- If it's First-Class Mail, Priority Mail or Priority Mail Express, the item moves from major airport gateways in the United States to overseas airport gateways on commercial aircraft. It then moves by various methods to designated military or diplomatic postal facilities for delivery to individual members. Mail also moves by military aircraft when necessary.

MILITARY Care Kit

Fact #318 | Updated: March 8, 2022

The Postal Service is the best way to ship directly to APO, FPO and DPO locations. The Military Care Kit contains six Priority Mail Flat Rate boxes — two large-sized and four medium-sized — six address labels, one roll of tape and six customs forms, and can be ordered at no charge at usps.com/shop or by calling 800-610-8734.

The Military Care Kit — and the special pricing offered for APO, FPO and DPO destinations — makes it easy to send care packages to loved ones stationed overseas.

usps.com/shop (<http://usps.com/shop>)



EDUCATION for consumers

Fact #317 | Updated: March 8, 2021

National Consumer Protection Week. During the Federal Trade Commission's annual awareness campaign, the Postal Service and U.S. Postal Inspection Service provide customers with education, tools and information to combat identity theft and mail fraud. More information can be found at consumer.ftc.gov/features/national-consumer-protection-week.

68,000 military veterans

Fact #288 | Updated: March 7, 2022

Veterans. The Postal Service employs nearly 68,000 military veterans, making it one of the largest employers of veterans in the country.

The organization has also issued more than 140 stamps honoring the nation's military history, including the Service Cross Medals stamps.

MAIL IS big business

Fact #108 | Updated: March 1, 2022

The U.S. Postal Service is the core of the nation's \$1.6 trillion mailing industry, which employs more than 7.3 million people.



The U.S. Postal Service is the core of the nation's **\$1.6 trillion** mailing industry, which employs more than **7.3 million** people.*

These types of mail brought in most of the **\$77 billion** in operating revenue in 2021:

- First-Class Mail — **\$23.3 billion**
- Marketing Mail — **\$14.6 billion**
- Shipping and Package Services — **\$32 billion**
- International — **\$2.2 billion**
- Periodicals — **\$942 million**

If it were a private sector company, the U.S. Postal Service would rank **43rd** in the 2021 Fortune 500.

In the 2021 Global Fortune 500 list, the U.S. Postal Service ranked **123rd**.

The Envelope Manufacturers Association Mailing Industry Job Study, 2019, reported that there are more than 7.3 million jobs and \$1.58 trillion in revenue attributed to the mailing industry. More information can be found at envelope.org.

152 Postal Heroes

Fact #97 | Updated: March 1, 2022

Heroes. Postal employees regularly go beyond the call of duty to protect the lives of the people they serve, including elderly or disabled customers through the Carrier Alert Program. In 2021, the Postal Service recognized 152 heroic employees.

6,600
letter carriers

Fact #72 | Updated: March 7, 2022

WHOA!
Pony Express
Fact #385 | Updated: March 4, 2021

Nearly 74,000 letter carriers drive to neighborhoods and then deliver the mail on foot. Nearly 6,600 carriers deliver mail entirely on foot -- the USPS Fleet of Feet. Mail is delivered by bicycle on select routes in Arizona and Florida, reducing emissions and saving fuel.

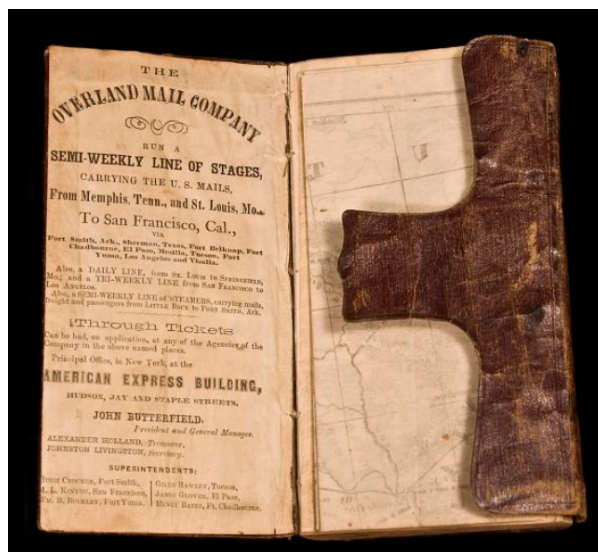
The Pony Express was in operation only from April 3, 1860, to Oct. 26, 1861. It was never part of the U.S. Postal Service.

That's no pony, that's a big horse

The official name for the "Pony Express" was the Central Overland California & Pike's Peak Express Co. Before they were hired, riders had to swear on a Bible not to curse, fight or abuse their animals. **Orphans were preferred.** The service was in operation only from April 3, 1860, to Oct. 26, 1861. It operated as a U.S. Mail route during its final 4 months.

On April 3, 1860, the first Pony Express mail, traveling by horse and rider relay teams, simultaneously leaves St. Joseph, Missouri, and Sacramento, California. Ten days later, on April 13, the westbound rider and mail packet completed the 1,800-mile journey and arrived in Sacramento, beating the eastbound packet's arrival in St. Joseph by two days and setting a new standard for speedy mail delivery. The Pony Express was by far the most effective way to communicate cross-country —until the telegraph came along. After 18 months in operation, the system was shuttered on October 26, 1861, and the last remaining mail was delivered.

The Pony Express National Historic Trail was designated to preserve the story and routes of this nationally significant trail and to support the associated sites that preserve its history. Learn more at <https://www.nps.gov/poex> (https://www.nps.gov/poex?fbclid=IwAR2KdN50AozolPGdixRK6jcSdl_HRRLkzWW1VOB0PiG1R3BZSd3b-fUfECY)



Sizing it up.

We make the connection. Friends and families, businesses and customers. The United States Postal Service delivers to every address in America, from the biggest cities to the smallest hamlets. The U.S. Mail is part of the fundamental infrastructure of this nation. It is a basic connection between all of the people and all of their institutions. This is our mandate — binding the nation together. This is our commitment — providing secure, reliable, affordable delivery of mail and packages. Always have, always will. It's what we do.

COMPANION PDF – 2022 ([HTTPS://FACTS.USPS.COM/WP-CONTENT/UPLOADS/SIZE-AND-SCOPE.PDF](https://facts.usps.com/wp-content/uploads/size-and-scope.pdf))

ELECTION MAIL

Fact #941 | Updated: March 8, 2022

The U.S. Postal Service upholds its promise to deliver the nation's Election Mail securely and on time, consistent with the organization's non-partisan public service mission.

Election Mail consists of mail to or from election officials, including ballots, ballot applications, registration forms, and other items that enable citizens to participate in the voting process.

Record numbers of voters chose to return their ballots via the U.S. Mail in the 2020 general election.

- On average, the Postal Service delivered ballots from election officials to voters in 2.1 days and ballots from voters to election officials in 1.6 days
- 99.89 percent of ballots were delivered to election officials within seven days from when the Postal Service received them. 97.9 percent of ballots mailed from voters to election officials were delivered within three days, and 99.7 percent were delivered within five days.
- Total mail volume surpassed 4.6 billion mail pieces for both Political Mail (used for issue advocacy and campaign purposes, excludes ballots) and Election Mail, representing a 114 percent increase above the 2016 election cycle
- The Postal Service delivered more than 135 million ballots, including blank ballots delivered from election officials to voters and completed ballots returning from voters to election officials.
- During the 2020 elections — with increased use of the U.S. Mail during the coronavirus pandemic — Postal Inspection Service personnel were in postal facilities throughout the country, ensuring that Election Mail was physically secure. From late October 2020 to mid-November (the first months of fiscal year 2021), the Inspection Service conducted 1,856 security sweeps at facilities in all 50 states, including all 220 facilities that processed ballots, logging more than 11,567 hours dedicated to protecting the integrity of Election Mail.



24-HOUR unstaffed Post Office

Fact #875 | Updated: February 28, 2022

One of a kind. There is a 24-hour, unstaffed, self-service Post Office in Northern Virginia that allows customers to conduct most shipping and mailing transactions quickly and easily themselves. The Self-Service Post Office provides round-the-clock accessibility to PO Boxes, as well as self-service kiosks and an automated package drop. In 2021, more than 9,000 customers took advantage of this convenient office.

425.3M mail pieces processed daily

Fact #844 | Updated: February 25, 2022

The Postal Service processed and delivered an average of 425.3M mail pieces daily in 2021.

GLOBAL bargain

Fact #714 | Updated: March 7, 2022

The price of a First-Class postage stamp is a global bargain.



Postage Prices are nominal prices converted to USD, not adjusted for purchasing power parity.
Exchange rates are as of January 27, 2022.

**3.3
MILLION**
pounds weekly

Fact #708 | Updated: March 7, 2022

The Postal Service sends 3.3 million pounds of international, military, and diplomatic mail and packages weekly, using 70 international airlines, composed of 11 US flag carriers and 19 foreign flag carriers, and their affiliates.

\$2.2
billion

Fact #707 | Updated: March 7, 2022

International Mail is a \$2.2 billion business for the Postal Service.

**KNOWN
GLOBALLY**

Fact #706 | Updated: March 7, 2022

The Postal Service is worldwide, shipping to many countries and working closely with other posts to improve service and increase its annual share of the international shipping market at the same time.

- International Mail is a \$2.2 billion business within the Postal Service.
- Most of the International Mail revenue is generated from outbound services that allow customers in the United States to send mail and packages abroad.
- The Postal Service sends 3.3 million pounds of international, military, and diplomatic mail and packages weekly, using 70 international airlines, composed of 11 US flag carriers and 19 foreign flag carriers, and their affiliates.
- Click-N-Ship allows customers to print shipping labels with postage for Global Express Guaranteed, Priority Mail International, Priority Mail Express International and First-Class Package International Service. For more information, go to usps.com/ship/ (<http://www.usps.com/ship/>).

POSTAL
size and scope

Fact #671 | Updated: March 7, 2022

The U.S. Postal Service delivers more mail than any other post in the world. The Postal Service serves 163.1 million addresses in the country — covering every state, city and town. Everyone living in the United States and its territories has access to postal products and services and pays the same for a First-Class Mail postage stamp regardless of location.

31,247 retail offices

Fact #669 | Updated: March 7, 2022

There are 31,247 Postal Service-managed retail offices. This number does not include contract offices.

22,986 leased properties

Fact #664 | Updated: March 7, 2022

The Postal Service leased 22,986 properties in 2021.

8,460 owned properties

Fact #663 | Updated: March 7, 2022

The Postal Service owns 8,460 properties around the country.

ORIGINAL social network

Fact #661 | Updated: March 7, 2022

The Postal Service is the original social network, but that doesn't mean we aren't represented on the others. You can find the Postal Service on Facebook, Twitter, Instagram, LinkedIn and YouTube.

Facebook — [facebook.com/usps](http://www.facebook.com/usps) (<http://www.facebook.com/usps>)

Twitter — [twitter.com/usps](http://www.twitter.com/usps) (<http://www.twitter.com/usps>)

Instagram — [instagram.com/uspostalservice](http://www.instagram.com/uspostalservice) (<http://www.instagram.com/uspostalservice>)

LinkedIn — [linkedin.com/company/usps](http://www.linkedin.com/company/usps) (<http://www.linkedin.com/company/usps>)

YouTube — [youtube.com/usps](http://www.youtube.com/usps) (<http://www.youtube.com/usps>)

68,000 Veterans

Fact #660 | Updated: March 1, 2022

Veterans. The Postal Service employs nearly 68,000 military veterans, making it one of the largest employers of veterans in the country. The organization has also issued more than 140 stamps honoring the nation's military history, including the Service Cross Medals stamps.

POSTAL BLUE is getting greener

Fact #655 | Updated: March 7, 2022

The Postal Service is working hard to put its stamp on a greener tomorrow for the many communities we serve. Postal carriers deliver mail using alternative fuel vehicles, on foot and even on bicycles. The 2020 energy reduction in postal buildings equated to powering more than 36,000 U.S. homes and the Postal Service is expanding solar powered facilities in 2021.

DATA driven

Fact #654 | Updated: March 7, 2022

The Postal Service uses data not only to ensure its operations run smoothly, but also to help businesses make better use of the mail. Its mission is to provide the right information to the right people in real time using advanced technology.

TECHNOLOGY enabled

Fact #653 | Updated: March 7, 2022

The Postal Service uses a vast network of people and advanced technologies to collect, process, transport and accurately deliver the nation's mail in an increasingly digital world.

EMPOWERED workforce

Fact #652 | Updated: March 7, 2022

The Postal Service invests more than \$600 million in training its workforce. The organization encourages employees to take advantage of self-paced career development by offering 24,000 online courses and 28 educational partnerships offering discounts towards degree and certification programs.

RESILIENT and adaptable

Fact #651 | Updated: March 7, 2022

The Postal Service has a long and storied history of creating new technologies for the American people — enabling faster, more efficient communication and safer, more secure delivery of correspondence and merchandise. For nearly two-and-a-half centuries, it has adapted to meet the evolving needs of its customers.

SELF sufficient

Fact #650 | Updated: March 7, 2022

As an independent establishment of the Executive Branch of the U.S. government, the Postal Service generally receives no tax dollars for operating expenses and relies on the sale of postage, products, and services to fund its operations.

CUSTOMER focused

Fact #649 | Updated: March 7, 2022

With more than 34,000 retail locations, more than 12 million daily visits on usps.com and delivering to 150.4 million residences and 12.8 million businesses at least 6 days a week, the Postal Service is committed to providing a positive customer experience.

UNIVERSAL service

Fact #648 | Updated: March 7, 2022

Everyone living in the United States and its territories (Puerto Rico, U.S. Virgin Islands, Guam, American Samoa, and N. Mariana Islands) has access to postal products and services and pays the same for a First-Class Mail postage stamp regardless of the sender's location.

MASTER of our domains

Fact #645 | Updated: February 28, 2022

The Postal Service owns 1,884 internet domains

527,000 wiper blades

Fact #642 | Updated: March 7, 2022

Better to see you with! The Postal Service ordered 527,000 wiper blades in 2021.

WE deliver!

Fact #641 | Updated: March 7, 2022

The Postal Service moves mail by planes, hovercraft, trains, trucks, cars, boats, ferries, helicopters, subways, bicycles, mules and feet.
#WeDeliverForYou

ESSENTIAL public service

Fact #600 | Updated: March 3, 2021

The Postal Service provides a vital public service that is a part of the nation's critical infrastructure. The statute that created the Postal Service begins with the following sentence: "The United States Postal Service shall be operated as a basic and fundamental service provided to the people by the Government of the United States, authorized by the Constitution, created by an Act of Congress, and supported by the people." 39 U.S.C. §101(a).

5,825 addresses daily

Fact #524 | Updated: March 7, 2022

The Postal Service added an average of 5,825 addresses to its delivery network every day in 2021.

17.7 MILLION mail pieces each hour

Fact #522 | Updated: March 7, 2022

On average, the Postal Service processes 425.3 million mail pieces each day, 17.7 million each hour, 295,000 each minute and 5,000 each second.

**\$364
MILLION**

SSK revenue

Fact #364 | Updated: March 7, 2022

In 2021, the Postal Service received \$364.5 million in revenue from 2,742 postal self-service kiosks (SSK).

**2.15
BILLION**

dollars

Fact #363 | Updated: March 7, 2022

Every two weeks, the Postal Service pays \$2.15 billion in salaries and benefits.

46%
of the world's
mail

Fact #362 | Updated: March 1, 2022

Forty-six percent of the world's mail volume is processed and delivered by the U.S. Postal Service.

75TH
Postmaster
General

Fact #348 | Updated: March 7, 2022

Louis DeJoy is the 75th Postmaster General of the United States.



**6.18
MILLION**

passport
applications

Fact #346 | Updated: March 7, 2022

The Postal Service accepted 6.18 million passport applications in 2021.

Postal Service revenue from passport applications was \$272 million.

46TH
if private sector

Fact #344 | Updated: March 7, 2022

If it were a private sector company, the Postal Service would rank 43rd in the 2021 Fortune 500. In the 2021 Global Fortune 500 list, we ranked 123rd.

**3.3
MILLION**
corporate emails
daily

Fact #338 | Updated: March 7, 2022

With one of the largest corporate email systems, in 2021, the Postal Service handled more than 3.3 million legitimate emails a day delivered to more than 212,000 email accounts.

Staying connected

The Postal Service has one of the world's largest computer networks — linking more than 31,000 facilities and connecting hundreds of thousands of employees and hundreds of systems.

In 2021 some emails were blocked due to:

- **Spam:** More than **6 million** spam email messages were blocked monthly.
- **Content:** More than **27 million** emails were blocked monthly due to malicious content including phishing, brand spoofing, and suspicious URLs being detected.
- **Malware:** More than **9,000** email messages were blocked monthly due to malware.
- **Blocking bad actors:** More than **5 million** email messages were blocked monthly due to sender reputation.
- **Advanced Threat Detection:** More than **16,000** email messages were blocked by domain impersonation, URL and file detonation detecting malicious content, or click-time URL protection.
- On average, 34 percent of the **101 million** email messages received from external senders were blocked monthly for the safety of the Postal Service network and email users.

ABOUT that motto

Fact #321 | Updated: February 28, 2022

The U.S. Postal Service has no official motto. Nope, it's not this: "Neither snow nor rain nor heat nor gloom of night stays these couriers from the swift completion of their appointed rounds." But we certainly appreciate the sentiment.

About that motto...

Those words are engraved on the front of the James A. Farley Post Office in NYC, set in stone by the architectural firm that built it. The phrase is taken from an ancient book by the Greek historian Herodotus and refers to messengers in the Persian Empire.

The phrase comes from book 8, paragraph 98, of *The Persian Wars* by Herodotus, a Greek historian. During the wars between the Greeks and Persians (500-449 B.C.), the Persians operated a system of mounted postal couriers who served with great fidelity.

The popular belief that Herodotus's description of the Persian postal service is about the U.S. Postal Service is a tribute to the hundreds of thousands of men and women who have delivered the mail reliably and dependably, through all conditions, for centuries.



41,683

ZIP Codes

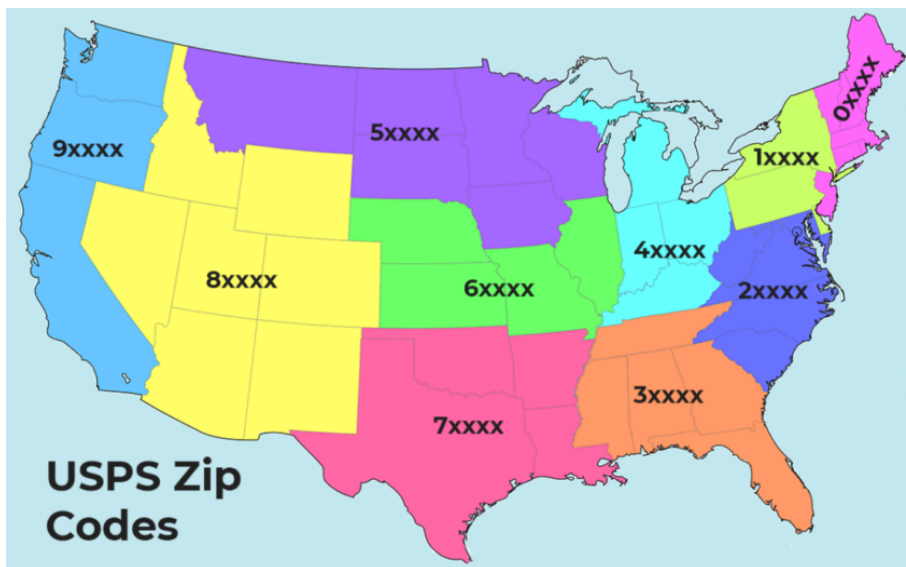
Fact #306 | Updated: February 28, 2022

There are 41,683 ZIP Codes in the country.

ZIP Codes range from 00501, belonging to the Internal Revenue Service in Holtsville, NY, to 99950 in Ketchikan, AK. Easiest to remember? How about 12345, a unique ZIP Code for General Electric in Schenectady, NY.

Quick! What's that ZIP Code?

The ZIP Code was introduced in 1963. The first number represents a general geographic area of the nation, "0" in the East moving to "9" in the West. The next two numbers indicate regional areas and the final two, specific Post Offices or postal zones in larger cities. Make it a ZIP+4 Code, introduced in 1983, and mail can be sorted to specific streets, buildings, houses and businesses. Today, ZIP Codes are important parts of the nation's 911 emergency system. ZIP = Zone or Zoning Improvement Plan.



1.2

BILLION

miles traveled

Fact #305 | Updated: February 28, 2022

Stellar performance! During 2021, Postal Service employees traveled 1.2 billion miles to deliver your mail, equivalent to 48,191 laps around Earth, 5,023 trips to the moon or 13 trips to the sun. *Based on the average moon and sun distance.

63 countries

Fact #296 | Updated: March 7, 2022

USPS Operation Santa

Fact #284 | Updated: March 10, 2022

The Military Postal Service provides service in 63 countries. There are 401 land-based and 626 onboard-ship Military Post Offices. The U.S. Department of State Diplomatic Post Office serves 32,500 customers at 184 diplomatic missions across 103 countries around the world. There are 1,200 ZIP Codes within the Military and Diplomatic Postal Service around the world.

For 109 years, postal employees and the American public have helped bring more magic to the holiday season, one letter to Santa at a time.



In 2021, 4.3 million people visited *USPSOperationSanta.com* (<https://www.USPSOperationSanta.com>), more than 203,000 profiles were created, and the identity verification success rate was 93.5 percent. Generous customers adopted 21,175 letters and shipped 21,443 packages, helping families and children experience the magic of the season when they might not have otherwise, one letter to Santa at a time.

In 2020, the program expanded nationwide for the first time. More than 1 million people visited *USPSOperationSanta.com*. Generous customers shipped more than 21,000 packages to the families and children who wrote to Santa to help them have a happier holiday.

In 2019, the digital program continued to expand. Letters were accepted from 17 locations, and the letters could be adopted by anyone in the country. Gifts could be shipped from more than 19,000 post offices.

In 2018, the Postal Service expanded the 2017 pilot test to include 6 additional cities (Austin, Indianapolis, Philadelphia, Phoenix, San Diego, Washington DC – and Puerto Rico and Chico, CA (site of wildfires). Letters from those locations populated the website and people in those locations only could adopt them and ship from one dedicated post office per city.

In 2017, the Postal Service launched a pilot test of a digital Operation Santa option for residents of New York City. People living in New York City, within proximity of the James A. Farley building could adopt letters online and ship gifts from JAF. Puerto Rico was also added after the hurricanes that year.

HISTORY

In 1912, Postmaster General Frank Hitchcock authorized local postmasters to allow postal employees and citizens to respond to letters addressed to Santa Claus and the program came to be known as *Operation Santa*.

In the 1940s, mail volume increased to the point where the Post Office Department invited charitable organizations and corporations to participate for philanthropic purposes —providing written responses and small gifts.

Through the years, the program has taken on a life of its own and today cities around the country have established successful programs with recognized charitable organizations, major corporations, local businesses and postal employees making a major difference in the lives of the children from coast to coast.



\$77
billion operating
revenue

Fact #190 | Updated: February 28, 2022

The Postal Service had \$77 billion in operating revenue in 2021

516,636
career
employees

Fact #238 | Updated: February 28, 2022

There were 516,636 career employees in 2021. The number of non-career employees was 136,531.

128.9
billion mail
volume

Fact #236 | Updated: February 28, 2022

Total mail volume in 2021 was 128.9 billion.

163.1
million delivery
points

Fact #227 | Updated: February 28, 2022

The Postal Service prides itself on going the last mile to deliver the mail. We served 163.1 million delivery points nationwide in 2021 with 1.7 million new delivery points added to the network.

36,000,000
address
changes

Fact #225 | Updated: February 28, 2022

36 million address changes were processed in 2021.

Internet Change-of-Address enables customers to change addresses online, and it offers them coupons for move-related products and services. More than 20 million address changes were submitted online in 2020.

31,247
retail Post
Offices

Fact #226 | Updated: February 28, 2022

There are 31,247 Postal Service-managed retail Post Offices in the United States.

749.1
million customer
visits

Fact #221 | Updated: February 28, 2022

The Postal Service recorded 749.1 million retail customer visits during 2021.

\$13
billion retail
revenue

Fact #219 | Updated: February 28, 2022

In 2021, retail revenue totaled \$13 billion.

MAIL IS
big business

Fact #108 | Updated: March 1, 2022

The U.S. Postal Service is the core of the nation's \$1.6 trillion mailing industry, which employs more than 7.3 million people.



The U.S. Postal Service is the core of the nation's **\$1.6 trillion** mailing industry, which employs more than **7.3 million** people.*

These types of mail brought in most of the **\$77 billion** in operating revenue in 2021:

- First-Class Mail — **\$23.3 billion**
- Marketing Mail — **\$14.6 billion**
- Shipping and Package Services — **\$32 billion**
- International — **\$2.2 billion**
- Periodicals — **\$942 million**

If it were a private sector company, the U.S. Postal Service would rank **43rd** in the 2021 Fortune 500.

In the 2021 Global Fortune 500 list, the U.S. Postal Service ranked **123rd**.

The Envelope Manufacturers Association Mailing Industry Job Study, 2019, reported that there are more than 7.3 million jobs and \$1.58 trillion in revenue attributed to the mailing industry. More information can be found at envelope.org.

232,368
postal vehicles

Fact #93 | Updated: February 28, 2022

58
CENTS

Fact #90 | Updated: March 1, 2022

Vehicles. The Postal Service has more than 230,000 vehicles, one of the largest civilian fleets in the world. Next generation delivery vehicles will have improved ergonomics, safety features, fuel efficiency and design flexibility.

Affordability. For 58 cents, anyone can send a letter, regardless of geographic location, to anywhere in the United States and its territories.



6,600
letter carriers

Fact #72 | Updated: March 7, 2022

425.3
million
mailpieces

Fact #49 | Updated: March 9, 2022

SELF
FUNDING

Fact #59 | Updated: March 1, 2022

4.5
BILLION
usps.com visits

Fact #28 | Updated: March 7, 2022

\$454
MILLION
online sales

Fact #29 | Updated: March 7, 2022

Nearly 74,000 letter carriers drive to neighborhoods and then deliver the mail on foot. Nearly 6,600 carriers deliver mail entirely on foot -- the USPS Fleet of Feet. Mail is delivered by bicycle on select routes in Arizona and Florida, reducing emissions and saving fuel.

The Postal Service processes and delivers 425.3 million mail pieces each day.

The Postal Service generally receives no tax dollars for operating expenses and relies on the sale of postage, products and services to fund its operations.

In 2021, usps.com recorded 4.5 billion visits -- averaging more than 12 million visitors each day. It's one of the most frequently visited government sites.

In 2021, stamp and retail sales at The Postal Store on usps.com -- the official online Post Office -- totaled \$454 million.

Postage stamps

Postage stamps are miniature works of art designed to reflect the American experience. They highlight heroes, history, milestones, achievements and natural wonders. There's a story behind every stamp.

50 STATES on Stamps

Fact #861 | Updated: February 25, 2022

All 50 states have been commemorated on postage stamps. They are each honored in 50 year increments from their inception date.



STAMPS in caves

Fact #768 | Updated: February 25, 2022

No troglodytes here! The Stamp Fulfillment Service facility, located in Kansas City, MO, is located in a limestone cave 150 feet beneath the ground. It is the Postal Service's only facility located underground.

The consistent, year-round temperatures and humidity levels in the caves allow the stamps to be maintained in mint-quality condition. The underground facility also keeps the inventory and employees safe from snow, flooding, winds and tornadic activity common in the Midwest.

FIRST

African
American on
stamp

Fact #702 | Updated: March 9, 2021

The first African American on a stamp was Booker T. Washington, 1940.



FIRST

Native American
on a stamp

Fact #700 | Updated: March 9, 2021

The first Native American on a stamp was Pocahontas, 1907.



FIRST Hispanic American on a stamp

Fact #699 | Updated: March 9, 2021

The first Hispanic American on a stamp was Adm. David Farragut, 1903.



1ST AMERICAN woman on a stamp

Fact #696 | Updated: March 9, 2021

The first American woman on a U.S. postage stamp was Martha Washington, 1902.

1,400 murals and sculptures

Fact #678 | Updated: March 9, 2021

More than 1,400 murals and/or sculptures from President Roosevelt's New Deal Programs are in our Post Offices around the nation.

Five murals were featured on First-Class postage stamps in 2019

1907 first Native American stamp

Fact #623 | Updated: March 5, 2021

The first Native American featured on a U.S. postage stamp was Pocahontas in 1907.

1903 1st Hispanic American stamp

Fact #622 | Updated: March 5, 2021

The first Hispanic American featured on a U.S. postage stamp was Adm. David Farragut in 1903.

STAMP printing technology

Fact #512 | Updated: March 7, 2022

In 2021, the Postal Service released several stamps that highlighted stamp printing technologies.

- The Lunar New Year – Year of the Ox stamp, part of the new Celebrating Lunar New Year stamp series, had intricate gold and orange foil in the stamp artwork, as well as in the stamp's selvage.
- The Star Wars Droids stamps, 10 designs in various sizes, included a varnish, high gloss coating on the Droids.
- The Sun Science stamps (10 designs) were printed with a foil treatment that adds a glimmer to the stamps.

- The Raven Story stamp inspired by the traditional story of the raven setting the sun, moon and stars free includes gold foil.
- The Message Monsters stamps (five designs) came complete with their own accessories. The selvage contained cartoony voice balloons and thought bubbles with exclamations and salutations, hats and crowns, hearts, stars, crazy daisies, and other fun flair making a fun addition to any piece of First-Class Mail.

PREPAID postage stamps

Fact #378 | Updated: March 4, 2021

1893 first woman on stamp

Fact #337 | Updated: March 5, 2021

LICK no more

Fact #336 | Updated: March 5, 2021

ALWAYS and forever

Fact #335 | Updated: March 5, 2021

STAMPS supporting causes

Fact #334 | Updated: March 7, 2022

People once had to pay for the postage on the letters they received. That resulted in a lot of mail being returned because the recipient didn't want to spend the money. Prepaid postage stamps, introduced in 1847, solved this problem.

The first woman to appear on a U.S. postage stamp was Queen Isabella in 1893. The first American woman honored on stamp was Martha Washington in 1902.

Stick the landing! In 1992, pressure-sensitive self-adhesive stamps rolled out nationally. By 2005, 98 percent of all stamps were this type.

The first Forever stamp, issued in 2007, was an image of the Liberty Bell. Forever stamps are purchased at the current First-Class Mail postage price and remain valid for full postage no matter how prices change.

Semipostal stamps are First-Class Mail stamps sold at a price above the cost of a regular stamp to raise funds for designated causes. The dollar amounts below represent the funds we have transferred to the causes listed.

Supporting causes in the public interest.

Semipostal stamps are First-Class Mail stamps sold at a price above the cost of a regular stamp to raise funds for designated causes. The dollar amounts below represent the funds the Postal Service has transferred to the causes listed.

- The Breast Cancer Research semipostal has raised more than **\$93.9 million** since 1998. More than **1.09 billion** Breast Cancer Research stamps have been sold.
- The Save Vanishing Species semipostal has raised more than **\$6.6 million** since 2011. More than **59.2 million** Save Vanishing Species stamps have been sold.
- The Alzheimer's semipostal has raised more than **\$1.2 million** since 2017. More than **9.5 million** Alzheimer's stamps have been sold.
- The Healing PTSD semipostal has raised more than **\$1.4 billion** since 2019. More than **13.5 million** Healing PTSD stamps have been sold.

13 BILLION

postage stamps
printed

Fact #333 | Updated: March 7, 2022

In 2021, 13 billion U.S. postage stamps were printed, and \$776.2 million in stamps and stamp product orders were received by mail, telephone at 1-800-STAMP-24 and online at usps.com/stamps.

Postage stamps are miniature works of art designed to reflect the American experience. Stamps highlight heroes, history, milestones, achievements, and natural wonders. There's a story behind every stamp.



OUTER SPACE

postage stamp

Fact #332 | Updated: March 5, 2021

Out of this world! A postage stamp was inside the New Horizons spacecraft that made a flyby of Pluto in July 2015. That's the farthest distance traveled by a postage stamp - more than 3 billion miles. So noted by the Guinness World Records.

68,000

military veterans

Fact #288 | Updated: March 7, 2022

Veterans. The Postal Service employs nearly 68,000 military veterans, making it one of the largest employers of veterans in the country.

The organization has also issued more than 140 stamps honoring the nation's military history, including the Service Cross Medals stamps.

58 CENTS

Fact #90 | Updated: March 1, 2022

Affordability. For 58 cents, anyone can send a letter, regardless of geographic location, to anywhere in the United States and its territories.



\$93 MILLION

breast cancer
research

Fact #32 | Updated: March 7, 2022

The Breast Cancer Research semipostal stamp has raised more than \$93.9 million for breast cancer research since 1998. More than 1.09 billion stamps have been sold.

In addition, the Save Vanishing Species semipostal stamp has raised more than \$6.6 million to support Multinational Species Conservation Funds since 2011. More than 59.2 million stamps have been sold.

Top thirteen

things you should know about the U.S. Postal Service

COMPANION PDF – 2022 ([HTTPS://FACTS.USPS.COM/WP-CONTENT/UPLOADS/13-THINGS-INFOGRAPHIC.PDF](https://facts.usps.com/wp-content/uploads/13-things-infographic.pdf))

13

Fact #906 | Updated: March 1, 2022

All heart. The Postal Service is the heart of the \$1.6 trillion United States mailing industry, which employs more than 7.3 million people.

12

Fact #904 | Updated: March 1, 2022

Global. The Postal Service processes and delivers 46 percent of the world's mail and is constantly innovating to make customer experiences better.

11

Fact #660 | Updated: March 1, 2022

Veterans. The Postal Service employs nearly 68,000 military veterans, making it one of the largest employers of veterans in the country. The organization has also issued more than 140 stamps honoring the nation's military history, including the Service Cross Medals stamps.

10

Fact #563 | Updated: March 1, 2022

Social responsibility. The Postal Service supports communities nationwide. These efforts include facilitating the nation's largest one-day food drive, working with customers to prevent dog bites, educating customers on consumer protection, and delivering holiday magic through USPS Operation Santa.

9

Fact #97 | Updated: March 1, 2022

Heroes. Postal employees regularly go beyond the call of duty to protect the lives of the people they serve, including elderly or disabled customers through the Carrier Alert Program. In 2021, the Postal Service recognized 152 heroic employees.

8

Fact #599 | Updated: March 1, 2022

Greener than you think. Our Priority Mail boxes meet Sustainable Forestry Initiative and Forest Stewardship Council certification standards. This means the paper for those boxes comes from well-managed forests. In addition, the boxes include at least 30-percent recycled content and as an additional bonus, they're free!

7

Fact #98 | Updated: March 1, 2022

Retail giant. The Postal Service has the nation's largest retail network (34,223) — larger than Subway (26,932) — larger than Dollar General (17,348) — larger than Starbucks (15,183) — larger than McDonald's (13,683).

6

Fact #93 | Updated: February 28, 2022

Vehicles. The Postal Service has more than 230,000 vehicles, one of the largest civilian fleets in the world. Next generation delivery vehicles will have improved ergonomics, safety features, fuel efficiency and design flexibility.

5

Fact #92 | Updated: March 1, 2022

Competition and collaboration. The Postal Service both competes and collaborates with the private sector. UPS and FedEx pay the Postal Service to deliver hundreds of millions of their ground packages, and USPS pays UPS and FedEx for air transportation.

4

Fact #90 | Updated: March 1, 2022

Affordability. For 58 cents, anyone can send a letter, regardless of geographic location, to anywhere in the United States and its territories.



3

Fact #94 | Updated: March 1, 2022

Dependable. The Postal Service is the only organization with the resources, network infrastructure and logistical capability to serve every residential and business address in the nation.

2

Fact #88 | Updated: March 1, 2022

Security. U.S. Mail is protected by more than 200 federal laws enforced by the Postal Inspection Service, one of the nation's oldest law enforcement agencies.

And most importantly...

1

Fact #59 | Updated: March 1, 2022

The Postal Service generally receives no tax dollars for operating expenses and relies on the sale of postage, products and services to fund its operations.

A decade of facts & figures

We make the connections. Friends and families, businesses and customers. We deliver to every address in America, from the biggest cities to the smallest hamlets. This is our mandate — binding the nation together. This is our commitment — providing secure, reliable, affordable delivery of mail and packages. Always have, always will. It's what we do.

COMPANION PDF – 2022 ([HTTPS://FACTS.USPS.COM/WP-CONTENT/UPLOADS/A-DECADE-OF-FACTS-AND-FIGURES.PDF](https://facts.usps.com/wp-content/uploads/a-decade-of-facts-and-figures.pdf))

All figures are for one fiscal year.

* As of September 30, 2020

**Mail bearing postage stamps — bill payments, personal correspondence, cards and letters, etc.

***Includes Priority Mail, Priority Mail Express, First-Class Packages, Package Services, Parcel Return Service and Parcel Select.

	2021	2020	2019	2018	2017	2016	2015	2014	2013	2012
Annual operating revenue	\$77 B	\$73.1 B	\$71.1 B	\$70.6 B	\$69.6 B	\$71.4 B	\$68.8 B	\$67.8 B	\$67.3 B	\$65.2 B
Career employees*	516,636	495,941	496,934	497,157	503,103	508,908	491,863	488,300	491,017	528,451
Mail volume	128.9 B	129.2 B	142.6 B	146.4 B	149.5 B	154.3 B	154.3 B	155.5 B	158.2 B	159.8 B
First-Class Mail volume	50.7 B	52.6 B	54.9 B	56.7 B	58.7 B	61.2 B	62.6 B	63.8 B	65.8 B	68.7 B
	2021	2020	2019	2018	2017	2016	2015	2014	2013	2012
First-Class Single Piece Mail volume**	13.9 B	15.2 B	16.5 B	17.5 B	18.5 B	19.7 B	20.7 B	21.8 B	22.6 B	23.2 B
Shipping/Package volume***	7.6 B	7.3 B	6.2 B	6.2 B	5.7 B	5.2 B	4.5 B	4 B	3.7 B	3.5 B
Marketing mail volume	66.2 B	64.1 B	75.7 B	77.3 B	78.3 B	80.9 B	80 B	80.3 B	80.8 B	79.5 B
Delivery points	163.1 M	161.4 M	160 M	158.6 M	157.3 M	156.1 M	155 M	153.9 M	152.9 M	152.1 M
	2021	2020	2019	2018	2017	2016	2015	2014	2013	2012
Address changes	36 M	35.9 M	35.8 M	36.8 M	36.8 M	37 M	37 M	34.4 M	38.8 M	39.7 M

	2021	2020	2019	2018	2017	2016	2015	2014	2013	2012
Total retail offices	34,223	34,451	34,613	34,772	35,005	35,423	35,520	35,649	35,434	35,369
Postal-managed retail offices	31,247	31,330	31,322	31,324	31,337	31,585	31,606	31,662	31,702	31,857
Retail customer visits	749.1 M	768.1 M	811.8 M	838.7 M	857.1 M	877.4 M	919.5 M	948.7 M	989.1 M	986.2 M
	2021	2020	2019	2018	2017	2016	2015	2014	2013	2012
Retail revenue	13 B	12.7 B	12.7 B	12.7 B	12.9 B	13.5 B	19.2 B	19 B	18.3 B	17.5 B
Postal Service-managed retail office revenue	10.5 B	10.1 B	10.1 B	9.8 B	9.9 B	10.2 B	10.4 B	10.7 B	10.8 B	10.7 B
Alternate access revenue	2.7 B	2.5 B	2.5 B	2.9 B	3.1 B	3.2 B	8.8 B	8.3 B	7.5 B	6.8 B
Alternate access revenue percentage	20.2%	19.8%	19.8%	23%	23.75%	23%	45.7%	43.7%	41%	39.1%
	2021	2020	2019	2018	2017	2016	2015	2014	2013	2012
Total delivery routes	233,171	231,579	231,807	231,843	228,483	229,104	226,777	224,365	225,152	227,000
Total vehicles	232,368	231,541	228,940	232,372	230,939	227,896	214,933	211,264	211,654	212,530

Trademarks**Trademarks**

The Eagle Logo, the trade dress of USPS packaging, the Letter Carrier Uniform and the Postal Truck and the following marks are among the many trademarks owned by the United States Postal Service: Click-N-Ship[®], Deliver The Win[®], EDDM[®], ePostage[®], Every Door Direct Mail[®], Express Mail[®], First-Class[™], First-Class Mail[®], First-Class Package International Service[®], Forever[®], Global Express Guaranteed[®], IMb[®], Informed Delivery[®], Intelligent Mail[®], Label Broker[™], Parcel Select[®], P.O. Box[™], Post Office[®], Pony Express[®], Postal Inspection Service[™], PostalOne![®], Postal Police[®], PostalProud[®], Priority Mail Express International[®], Priority Mail Flat Rate[®], Priority Mail International[®], Priority: You[®], Registered Mail[™], Standard Mail[®], The Postal Store[®], United States Postal Inspection Service[®], United States Postal Service[®], U.S. Mail[®], U.S. Postal Inspector[™], U.S. Postal Service[®], USPS[®], USPS BlueEarth[®], USPS Mobile[®], USPS Operation Santa[®], USPS Tracking[®], usps.com[®], We are people delivering to people[™], ZIP+4[®] and ZIP Code[™]. This is not a comprehensive list of all Postal Service trademarks.

Non-Postal Trademarks

Dollar General[®], Forest Stewardship Council[®], McDonald's[®], National Dog Bite Prevention Week[®], Starbucks[®], Subway[®], Sustainable Forestry Initiative[®], The Climate Registry[®].

***Postal Facts 2022* provides the public with information about the U.S. Postal Service. The facts in this publication may be reproduced for the purpose of stating the fact itself, and in a business, informational or academic context and the like, and in the body of text discussing factual subject matter relevant to the fact being presented. However, these facts may become outdated after publication and seeking the latest information is advised.**

Produced by U.S. Postal Service Corporate Communications

© 2022 United States Postal Service. All rights reserved.

© 2016-2022 United States Postal Service. All rights reserved.